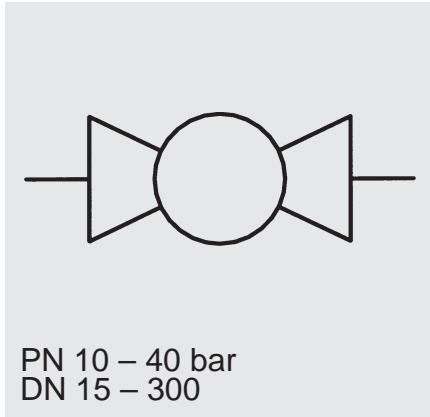




## Flanged ball valves KHFF



**Model code**  
(also order example)

**KHFF 100 10333 06 X**

**Designation**

KHFF = flanged ball valves DN 15 - 300

**Nominal bore**

**Material codes**

	3333	10333
Body	1.4408	1.0619
Seats	PTFE	PTFE
Ball	1.4408	1.4308

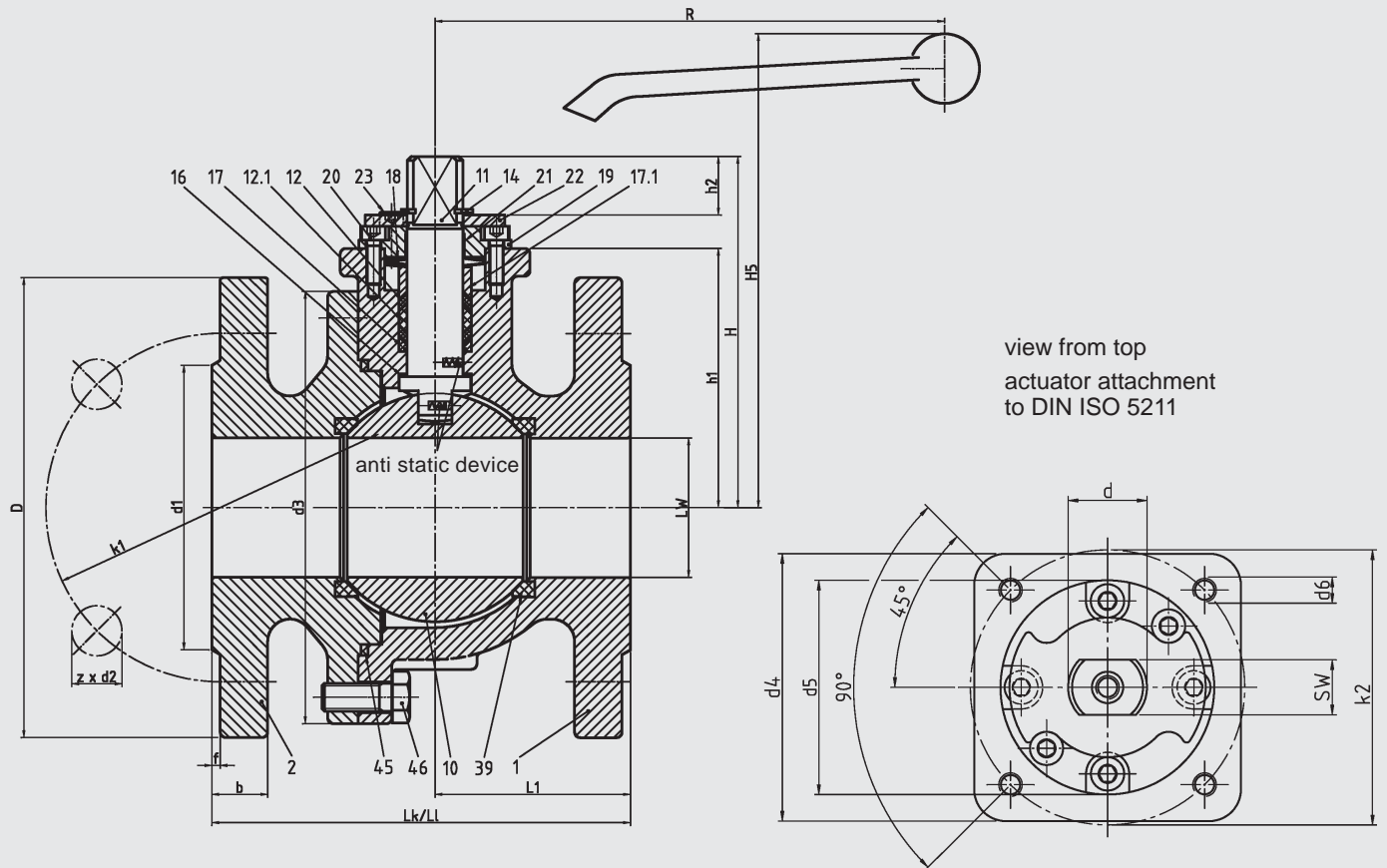
**Handle**

06

**Series**

(determined by manufacturer)

# KHFF



view from top  
actuator attachment  
to DIN ISO 5211

Item	Denomination	Material KHFF 3333	Material KHFF 10333
1	body 1	1.4408	1.0619
2	body 2	1.4408	1.0619
10	ball	1.4408	1.4308/1.4408
11	stem	1.4401	1.4401
12	stem seal	PTFE	PTFE
12.1	stem seal	PTFE	PTFE
14	safety ring	1.4310	1.4310
16	thrust ring	PTFE	PTFE
17	ring	1.4401	1.4401
17.1	gland	1.4401	1.4401
18	Belleville-type washer	1.4310/1.4568	1.4310/1.4568
19	cover	1.4408	1.4408
20	socket head screw	A2 - 70	A2 - 70
21	bearing strip	PTFE	PTFE
22	stop disc	1.4401	1.4401
23	socket head screw	A2 - 70	A2 - 70
39	ball seat ring	PTFE +25% glass fibre*	PTFE +25% glass fibre*
45	body seal	PTFE	PTFE
46	hexagon bolt	A2-70 / A4-70	A2-70 / 8.8

\* standard, optional PTFE +50% stainless steel, PTFE + carbon, PTFE pure

## Dimensions

DN	PN	LW	L <sub>k</sub> *	L <sub>l</sub> *	L1	d3	H	H5	h1	h2	d	SW	k1	d1	d2	d4	d5	d6	k2	R	D	b	f	z	weight kg L <sub>k</sub> *	weight kg L <sub>l</sub> *	ISO 5211	
15	40	16	115	130	47								65	45							95	16			3.9	4		
20	40	20	120	150	49	90	80	133	63	10	16	12.4	75	58	14	48	35	M6	50	160	105				4.4	4.5	F 05	
25	40	25	125	160	52								85	68							115	18			4.6	4.7		
32	40	32	130	180	55	98	85	138	68				100	78							140				6.4	6.8		
40	40	40	140	200	69.5	129	109	158	80	14			110	88		68	55	M8	70		150				8.5	8.9	F 07	
50	40	50	150	230	70	155	126	171	93		20	14	125	102							215	165	20		12.8	13.5		
65	16									18			145	122	18							185	18			19	20.5	
65	40	65	170	290	80	190	150	195	115													22			20	21.5		
80	40	80	180	310	86	208	161	211	124				160	138		96	70	M10	102		200	24			25	27.5	F 10	
100	16									20	25	19.3	180	158							300	220	20			30	34	
100	40	100	190	350	94.5	242	178	228	141				190	162	22							235	24			33.5	37.5	
125	16												210	188	18						635	250	22	8		67	72	
125	40	125	325	400	162.5	290	265	270	222	30	35	25.5	220		26							270	26			72	77	
150	16												240	212	22							285	22	2		100	106	
150	40	150	350	480	175	327	297.5	301	242.5				250	218	26	150	85	M12	125		300	28			106	112	F 12	
200	10																					24						
200	16									41.5	44	32	295	268	22						800	340	26			161	173	
200	25	200	400	600	200	400	335	338	280				310	278	26							360	30			164	176	
200	40												320	285	30							375	34			172	184	
250	10												350	320	22							395	26			255		
250	16												355		26							405		12		257		
250	25	250	450	-	225	492	390	-	330				370	335	30							425	32			272		
250	40												385	345	33							450	38			292		
300	10									51	48	36	400	370	22	175	100	M16	140	-		445	26			339		F 14
300	16												410	378	26							460	28			340		
300	25	300	500	-	250	575	425	-	365				430	395	30							485	34			355		
300	40												450	410	33							515	42	16		380		

\* L<sub>k</sub> = short design - DIN EN 558-1 - row 27

\* L<sub>l</sub> = long design - DIN EN 558-1 - row 1

## Technical specifications

Flange connections:	DIN EN 1092 - 1 : 2000, DN 15 - DN 300, PN 10 - PN 40
Raised face:	DIN EN 1092 - 1 : 2000 Form B1 (others on request)
Face-to-face:	DIN EN 558- 1 row 27 (F4/F5), DIN EN 558- 1 row 1 (F1)
Housing materials:	Standard: 1.4408 and 1.0619, optional: 1.4308, 1.4539, Hastelloy C4. (others on request)
Ball materials:	Standard: 1.4408 and 1.4308, optional: 1.4539, Hastelloy C4. (others on request)
Ball seats:	Standard: PTFE + 25% glass fibre reinforced, optional PTFE + 50% stainless steel, PTFE + carbon or PTFE pure
Stem sealing:	PTFE- or graphite stuffing box, supported by Belleville-type washer. Belleville-type washers are completely enclosed and protected against ingress of dirt.
Operation:	by stem on two flats to NAMUR recommendation
Top flange:	DIN ISO 5211 for hand-operation by worm gear, pneumatic, electric or hydraulic actuator.
Test certificates:	EN 10204 2.2 or 3.1 B/C/A
Certification according to:	PED 97/23/EC manufactured to AD-2000 TA - Luft 2002 (Technical Instructions on Air Quality) Fire - Safe BS 6755, part 2 (DN 25 - DN 100) DIN DVGW Reg.-No. NG-4313AP1147 DIN EN ISO 9001 - TÜV CERT -
Accessories:	Stem extension, locking and positioning device, heating jackets and high-quality sensors (additional equipment on request).
Temperature range:	-50 °C to + 230 °C, depending on ball seats
Application:	Neutral gases and fluids, mineral oil products, alkalis, corrosive fluids and gases

## Note

The information in this brochure relates to the operating conditions and applications described.  
For applications or operating conditions not described, please contact the relevant technical department.  
Subject to technical modifications.