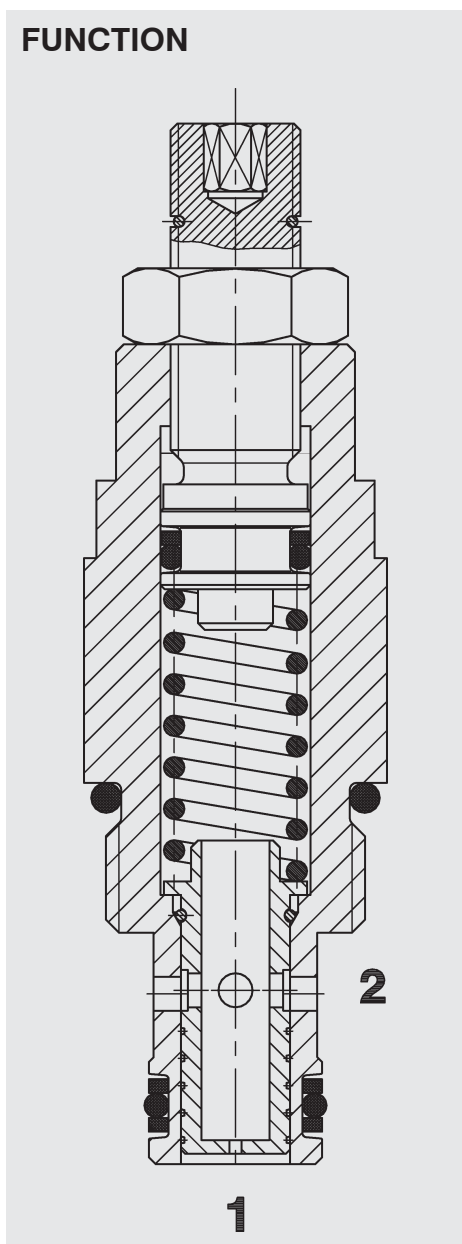


FUNCTION



The SR08 maintains a constant outlet flow at port 2 regardless of pressure changes downstream on port 2. The flow range is determined by a fixed measuring orifice and can be adjusted within a limited range. In the reverse direction from port 2 to port 1 the flow is free. A pressure drop results in accordance with the measuring orifice.

Flow Regulator SAE 8-Cartridge – 350 bar

UNF

SR08-01

Restrictive style – pressure compensated

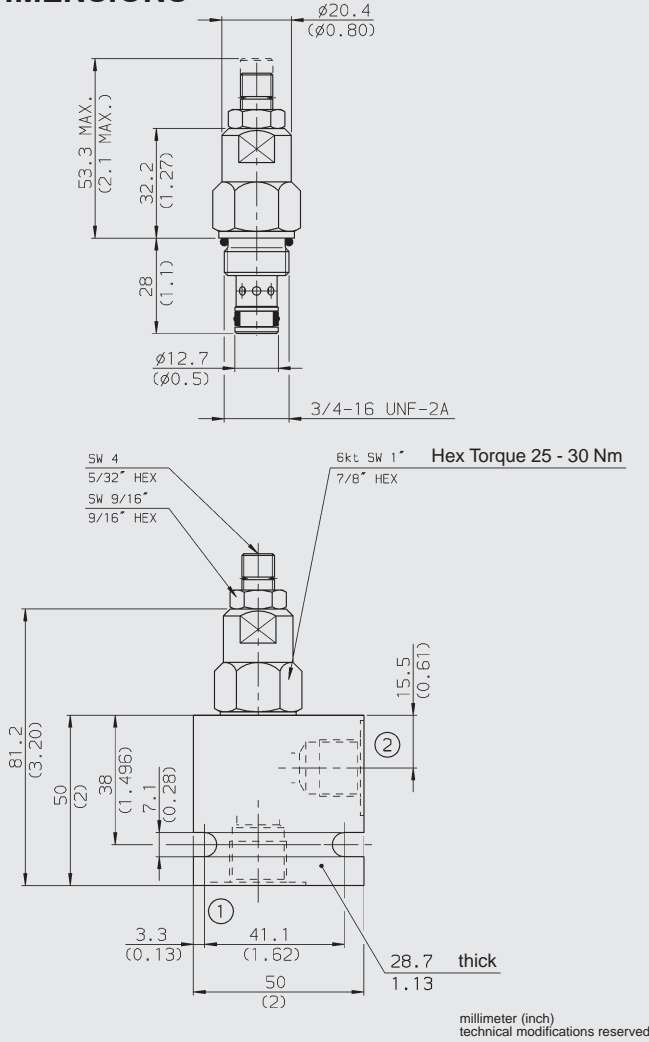
FEATURES

- Excellent stability throughout flow range
- All surfaces zinc-plated and corrosion-proof
- All valve parts made of high-strength steel with hardened and ground components to ensure minimal wear and extended service life
- Rigid design using one-piece-body minimizes the effect of eccentricity and maximizes reliability
- Low pressure drop by CFD optimized flow-path
- Optional flow ranges up to 30 l/min
- Reverse flow function
- Limited flow adjustment

SPECIFICATIONS

Operating pressure:	350 bar
Nominal flow:	30 l/min
Flow ranges:	0.95 – 1.50 l/min 1.15 – 2.00 l/min 2.00 – 3.60 l/min 3.30 – 6.30 l/min 5.40 – 9.70 l/min 8.80 – 16.70 l/min 14.00 – 27.00 l/min
Media operating temp. range:	-20 °C to +120 °C
Fluids:	Mineral-based or synthetics with lubricating properties
Viscosity:	7.4 to 420 mm ² /s
Filtration:	Class 21/19/16 according to ISO 4406 or cleaner
Material:	Valve body: carbon steel Spool: carbon steel Seals: NBR (Standard) FKM (Option) Support rings: PTFE
Cavity:	FC08-2
Weight:	0.113 kg

DIMENSIONS



MODEL CODE

SR08-01 - C - N - 1.0 V 0.8

Basic Model

Body and Ports*

C = Cartridge only

SB3 = 3/8 BSP ports, steel body

AB3 = 3/8 BSP ports, aluminium body

SAE/NPT bodies on request

Seals

N = NBR

V = FKM

Flow Rate Code & Flow Range

0.5: 0.95 – 1.50 l/min

0.6: 1.15 – 2.00 l/min

1.0: 2.00 – 3.60 l/min

1.8: 3.30 – 6.30 l/min

2.8: 5.40 – 9.70 l/min

4.8: 8.80 – 16.70 l/min

7.9: 14.00 – 27.00 l/min

Adjustment Option

V = Allen head (HEX 5/32)

other adjustment options on request

Setting

Omission = adjusted to lowest value of flow range (US gpm)

Standard models

Model code	Part no.
SR08-01-C-N-0.5V	3009246
SR08-01-C-N-1.0V	3015411
SR08-01-C-N-1.8V	3015412
SR08-01-C-N-4.8V	3015474
SR08-01-C-N-7.9V	3015475

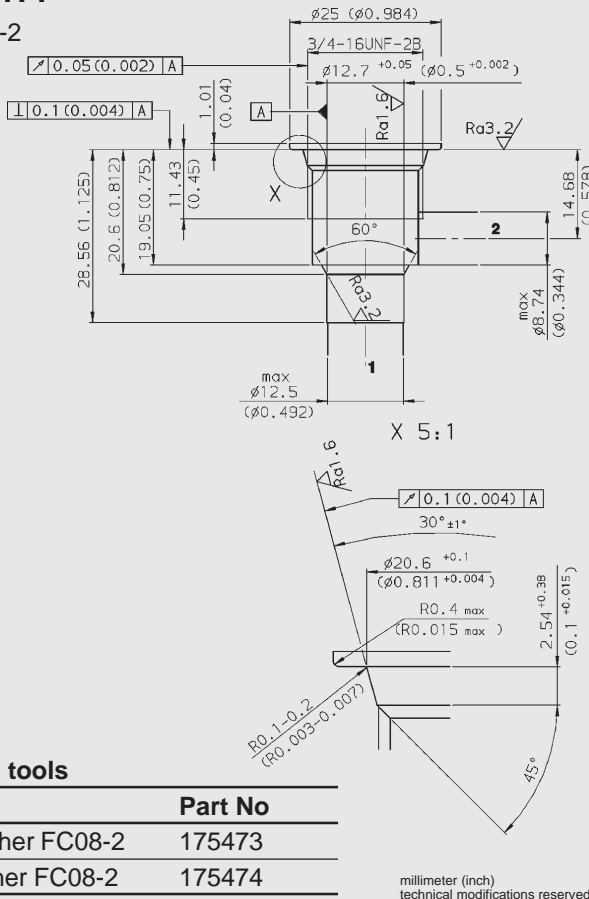
*Standard Line Bodies

Code	Part No	Material	Ports	Pressure
FH082-SB3	560919	Steel, zinc-plated	3/8 BSP	420 bar
FH082-AB3	3011423	Aluminium, clear anodized	3/8 BSP	245 bar

SAE/NPT bodies on request

CAVITY

FC08-2

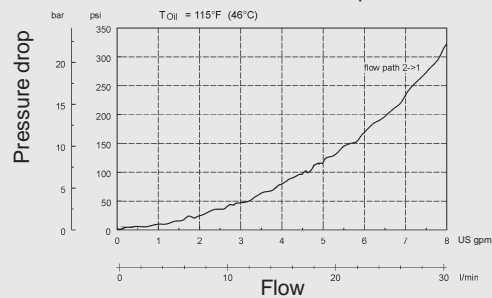
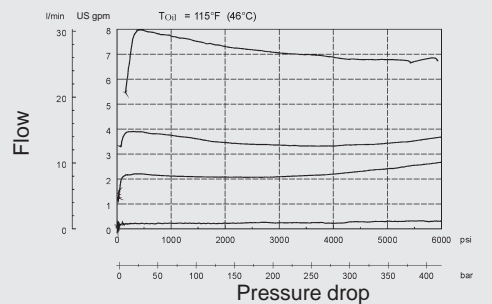


Form tools

Tool	Part No
Rougher FC08-2	175473
Finisher FC08-2	175474

PERFORMANCE (Cartridge Only)

Measured at 34 mm²/s



For delivery times, see current price list.

NOTE

The information in this brochure relates to the operating conditions and applications described. For applications or operating conditions not described, please contact the relevant technical department. Subject to technical modifications.

HYDAC Fluidtechnik GmbH
 Justus-von-Liebig-Str.
D-66280 Sulzbach/Saar
 Tel: 0 68 97 /509-01
 Telefax. 0 68 97 /509-598
 E-Mail: flutec@hydac.com