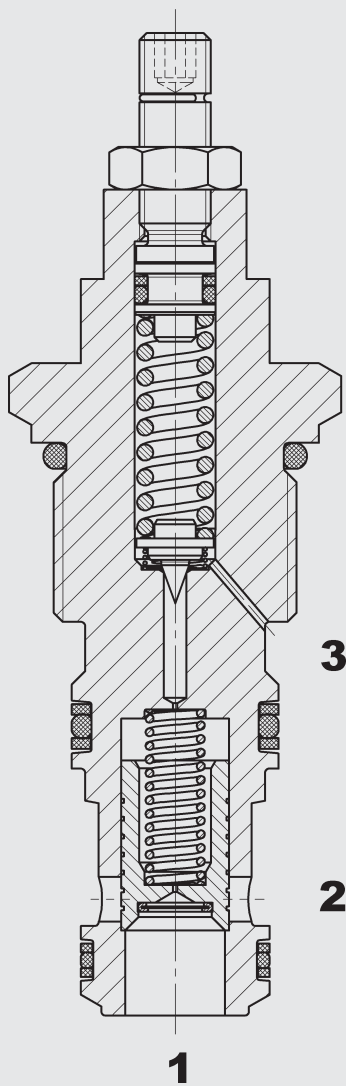


up to 200 l/min
up to 350 bar

FUNCTION



The DB12121PE is a spool-type pilot-operated pressure relief valve with additional pilot drain at port 3, i.e. pressures across port 2 have no effect on the pressure setting. If the pressure across port 1 rises and exceeds the pre-set value, the pilot-stage opens and oil flows from behind the main spool to the tank port 3. The resulting pressure differential causes the main spool to move against the reset-spring and allows oil to flow from port 1 to port 2.

Pressure Relief Valve Spool Type, Pilot-Operated With Pilot Drain Cartridge Valve – 350 bar DB12121PE-01

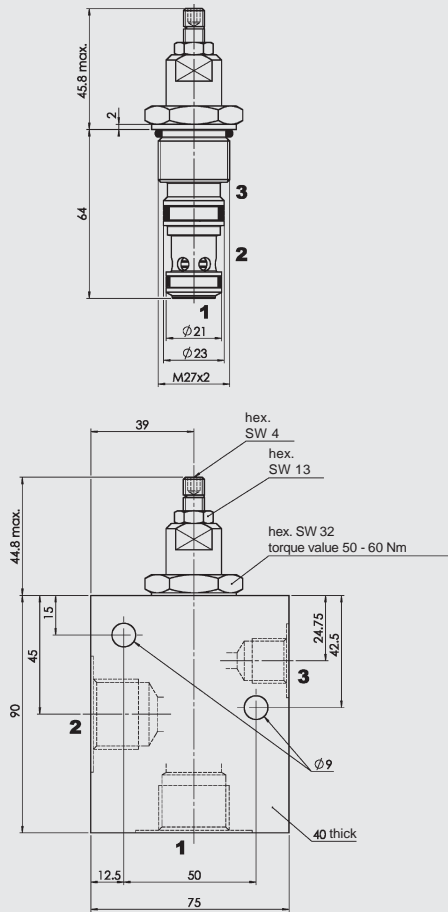
GENERAL

- All surfaces zinc-plated
- Minimal wear and long life due to hardened and polished control spool
- Various pressure ranges up to 350 bar
- Quick response
- Increased operating safety due to protective screen
- Low hysteresis and excellent stability throughout the flow range
- Compact design allows space-saving installation in connection housings and control blocks
- Additional tank connection to drain the pilot stage

SPECIFICATIONS

Operating pressure:	max. 350 bar
Flow rate:	max. 200 l/min
Pressure ranges:	up to 35 bar up to 60 bar up to 125 bar up to 230 bar up to 350 bar
Internal leakage:	< 320 cm ³ /min at 350 bar
Temperature range of operating fluid:	-20 °C to +120 °C
Ambient temperature range:	-20 °C to +80 °C
Operating fluid:	hydraulic oil to DIN 51524 Part 1 and 2
Viscosity range:	10 mm ² /s to 420 mm ² /s is recommended
Filtration:	max. permissible contamination level of the operating fluid to ISO 4406, Class 21/19/16
Mounting position:	optional
Materials:	valve body: high tensile steel closing element: hardened and polished steel seals: NBR (standard) FKM (optional) Back-up rings in PTFE
Cavity:	12121
Weight:	0.26 kg

DIMENSIONS



MODEL CODE

DB 12121 - PE - 01 - C - N - 350 V 230

Designation — Pressure relief valve

Cavity — 12121 = 3-way cavity

Function — PE = pilot-operated with pilot drain

Type — 01 = standard model

Type of connection — C = cartridge valve

Material of seal — N = NBR
V = FKM

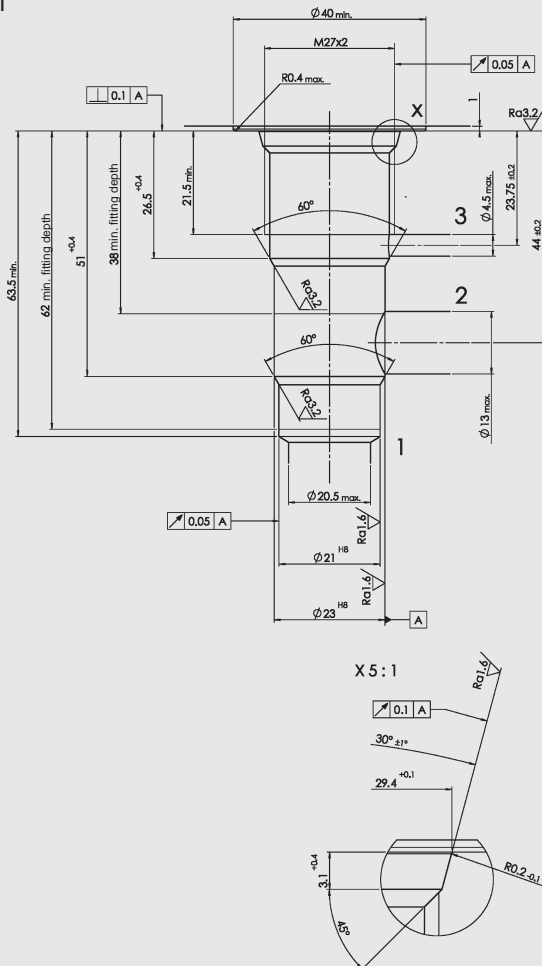
Pressure range — 035 = up to 35 bar
060 = up to 60 bar
125 = up to 125 bar
230 = up to 230 bar
350 = up to 350 bar

Adjustment options — V = adjustable using tool (standard)
H = handwheel
F = fixed setting, cannot be adjusted
K = adjustable, with protective cap

Cracking pressure setting — No details = no setting, spring relaxed
Pressure value = cracking pressure specified by customer

CAVITY

12121



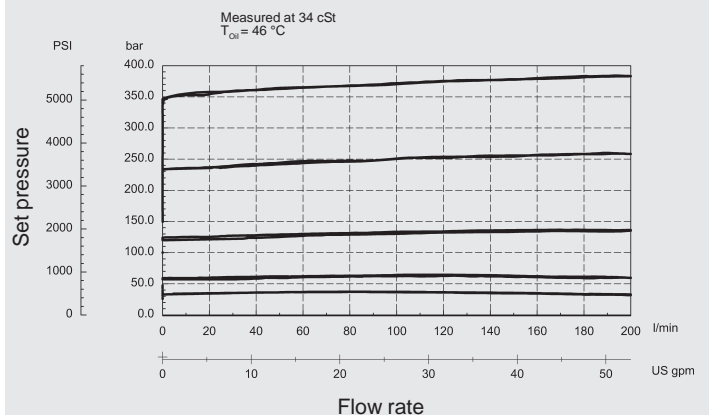
Standard models

Model code	Stock no.
DB12121PE-01-C-N-060V	3132640
DB12121PE-01-C-N-230V	3132642
DB12121PE-01-C-N-350V	3132643

Inline connection housing

Model code	Stock no.	Material	Ports
R12121-01X-01	3130704	Steel, zinc-plated	G3/4; G3/8

PERFORMANCE



NOTE

The information in this brochure relates to the operating conditions and applications described.
For applications or operating conditions not described, please contact the relevant technical department.
Subject to technical modifications.

HYDAC Fluidtechnik GmbH
Justus-von-Liebig-Str.
D-66280 Sulzbach/Saar
Tel: 0 68 97 /509-01
Telefax: 0 68 97 /509-598
E-Mail: flutec@hydac.com