



Test & Measurement

Manometer Pressure Gauges

Test Gauge Kits

Multistation Gauge Isolators



How does your equipment measure up?

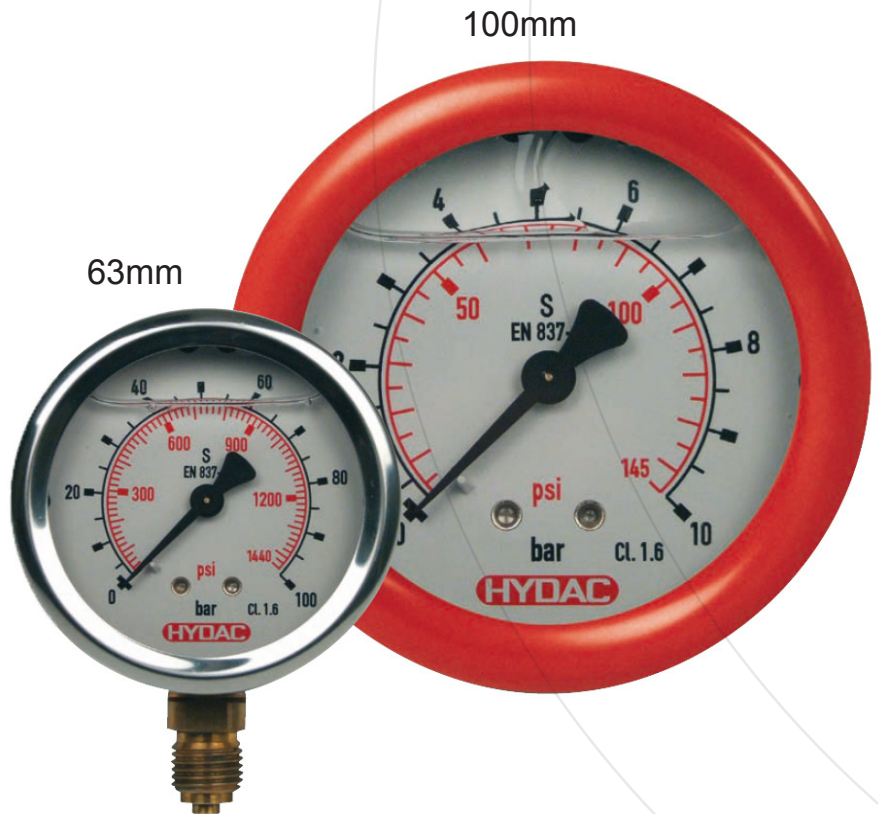




Manometer Pressure Gauges



Available in 63mm and 100mm the robust HYDAC manometer pressure gauges have a stainless steel case and liquid filling.



63mm

100mm

Copper alloy wetted parts
Stainless steel case
Glycerine filled



General

Intended for adverse service conditions where vibration and pulsation exist. The HYDAC range of manometers are also suitable for gaseous or liquid media that will not obstruct the pressure system or attack copper alloy parts.

Standard Features

Casing:	Stainless steel
Wetted parts:	Copper alloy
Nominal sizes:	63mm & 100mm
Range:	Bar & psi
Case filling fluid:	Glycerine 99.7%
Max process temperature:	60°C
Process connection:	63mm gauge - G1/4" BSPp 100mm gauge - G1/2" BSPp
Accuracy class:	± 1.6% of span 63mm ± 1.0% of span 100mm
Pressure gauge standard:	International standard EN 837

Accuracy & Calibration Service available

At HYDAC we offer a testing and calibration service to ensure that your gauge is precise and accurate.





Manometer Pressure Gauges

Model Code

Manometer NG | **63** - **25** | **1/4** | **B** - **Bottom**

Manometer Pressure Gauges

Type

63 = 63mm gauge
100 = 100mm gauge

Pressure rating scale (bar)

-1/0 = -1 to 0 bar pressure gauge		40 = 40 bar pressure gauge
-1/3 = -1 to 3 bar pressure gauge		60 = 60 bar pressure gauge
0/4 = 0 to 4 bar pressure gauge		100 = 100 bar pressure gauge
0/6 = 0 to 6 bar pressure gauge		160 = 160 bar pressure gauge
10 = 10 bar pressure gauge		250 = 250 bar pressure gauge
16 = 16 bar pressure gauge		400 = 400 bar pressure gauge
25 = 25 bar pressure gauge		600 = 600 bar pressure gauge

Process connection

1/4 = G1/4" BSPP
1/2 = G1/2" BSPP

Connection type

B = BSPP connection
NPT = NPT connection

Gauge Connection

Bottom = Direct bottom connection
Rear = Direct rear connection

Pressure Gauge Accessories



U-Clamp Bracket

Manometer NG 63 Bracket
Manometer NG 100 Bracket



3 Hole Bezel

Manometer NG 63 Flange



Rubber Cover

Manometer NG 63 Rubber Cover
Manometer NG 100 Rubber Cover



3 Hole Flange

Manometer NG 63 Flush Mount Ring
Manometer NG 100 Flush Mount Ring

Mining Staplelock Pressure Gauge



Staplelock Pressure Gauge DN10

Manometer NG 50-600 DN10

HYDAC Staplelock Pressure Gauges are ideal for mining applications and come in glycerine filled lenses and copper alloy wetted parts for durability and longevity.



Test Gauge Kits



"A must have for every mobile service engineer, HYDAC Test Gauge Kits interchange with all competitor Test 20 test points and are capable of pressure testing on any machine."

Durable
Versatile
Compact
Made In Germany

General

Available with one, two or three pressure gauges, HYDAC Test Gauge Kits offer accurate, precise and efficient pressure control and monitoring for your hydraulic system, while eliminating the risk of introducing contamination. The kits are pre-packaged with quality HYDAC gauges, adapters and test couplings that are designed to be precise as well as durable.

Contents

TGK 1



- 1 - Pressure Gauge (63mm)
- 1 - 1/4 gauge to hose adaptor
- 1 - 1/4 direct gauge adaptor
- 1 - 1/4" BSPP test point coupling
- 1 - M10 test point coupling
- 1 - M10 to 3/8" BSP thread reducer
- 1 - M10 to 1/2" BSP thread reducer
- 1 - 2 metre test hose

TGK 2



- 2 - Pressure Gauge (63mm)
- 1 - 1/4 gauge to hose adaptor
- 1 - 1/4 direct gauge adaptor
- 1 - 1/4" BSPP test point coupling
- 1 - M10 test point coupling
- 1 - M10 to 3/8" BSP thread reducer
- 1 - M10 to 1/2" BSP thread reducer
- 1 - 2 metre test hose

TGK 3



- 3 - Pressure Gauge (63mm)
- 1 - 1/4 gauge to hose adaptor
- 2 - 1/4 direct gauge adaptor
- 3 - 1/4" BSPP test point coupling
- 3 - M10 test point coupling
- 1 - M10 to 3/8" BSP thread reducer
- 1 - M10 to 1/2" BSP thread reducer
- 2 - 2 metre test hose



Test Gauge Kits

Model Code

TGK

1

X/X/X

.X

Test Gauge Kit

Type

- 1 = includes one pressure gauge
- 2 = includes two pressure gauges
- 3 = includes three pressure gauges

Pressure gauges (bar)

-1/0 = -1 to 0 bar pressure gauge		40 = 40 bar pressure gauge
-1/3 = -1 to 3 bar pressure gauge		60 = 60 bar pressure gauge
0/4 = 0 to 4 bar pressure gauge		100 = 100 bar pressure gauge
0/6 = 0 to 6 bar pressure gauge		160 = 160 bar pressure gauge
10 = 10 bar pressure gauge		250 = 250 bar pressure gauge
16 = 16 bar pressure gauge		400 = 400 bar pressure gauge
25 = 25 bar pressure gauge		600 = 600 bar pressure gauge

Series

(determined by manufacturer)

Note: Test gauge Kits come with 63mm diameter bottom entry gauges. For other options please contact HYDAC.

Test Gauge Kit Components

Test Point Couplings

Thread	M 10 x 1	ISO 228-G 1/4
Sealing details	O-Ring/Form G	Gi-Ring/Form F
pmax	63 MPa	63 MPa
Torque [Nm]	15	40
H [mm]	37.5	36
i [mm]	8.5	10
SW [mm]	17	19



Direct Gauge Adaptor

Internal thread	ISO 228-G 1/4
pmax	63 MPa
SW [mm]	19



Test Hoses

L [mm]	200
pmax	63 MPa



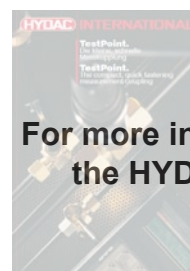
M10 to BSP Thread Reducer

Thread	ISO 228-G 3/8	ISO 228-G 1/2
pmax	630	630
L [mm]	13	10
i [mm]	12	14
SW [mm]	22	27



Gauge to Hose Adaptor

Internal thread	ISO 228-G 1/4
External thread	1620 / M 16 X 2
L [mm]	38
SW [mm]	19



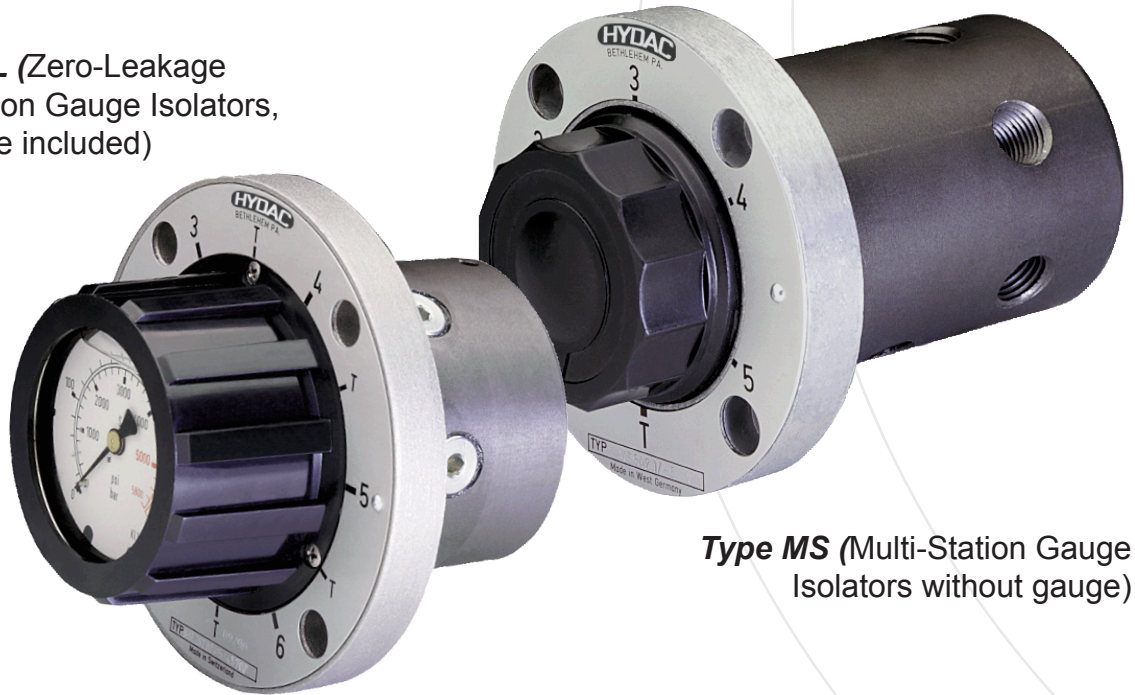
For more information please refer to the HYDAC Test Point catalogue:

E 6.103.2/03.10



Multistation Gauge Isolators

Type MSL (Zero-Leakage Multi-Station Gauge Isolators, with gauge included)



Type MS (Multi-Station Gauge Isolators without gauge)

General

Multi-station gauge isolators are designed to check different pressures in a hydraulic system. There are models with a built in pressure gauge for different pressure ranges or models to which a separate pressure gauge can be connected. If it is necessary for the system pressure to be retained during the measuring process, the leakage free model must be used.

Model Code

MS **4** **A** **2** **.** **0** / **315** **.**

Multi-station gauge isolator

MS
MSL

Type

2 = with built in pressure gauge
4 = turn and press to read (6 positions) | 5 = turn to read (5 positions)
6 = turn and press to read (9 positions) | 7 = turn to read (8 positions)

Type of connection

A = threaded connections for inline mounting / G 1/4
G = 1/4 NPTF | H = 7/16 - 20 UNF (only for MSL)

Type code

Modification number

Scale

40 = max. eff. indication 40 bar (Scale 63 bar) | 63 = 63 bar (Scale 100 bar)
100 = 100 bar (Scale 160 bar) | 180 = 180 bar (Scale 250 bar)
315 = 315 bar (Scale 400 bar)

Supplementary details

V = Viton seals | 12 = 7/16 X 20 UNF - MS 4/5
D = Connection for external pressure gauge (only for MSL Type 2)

Calibration technology...

The precision you need...

A multitude of specific patents ensure unmatched performance characteristics with many of our high-precision calibration and test equipment. Our customers particularly appreciate the well-proven functionality of our instruments which underlines that HYDAC is not only a manufacturer of calibration equipment, but these are also installed in large quantities in our calibration laboratories and comparable laboratories worldwide. Our specialists are happy to provide competent advice to you at any time about solutions to your calibration tasks and, specifically, they can also develop a solution customised to your needs. Because of our worldwide presence we are always able to ensure direct customer contact and aftersales service worldwide.

Range of services...

- Precision instruments including software
- Customized solutions up to complete equipping of turnkey test and calibration laboratories
- Consulting, engineering and training
- Calibration and maintenance service

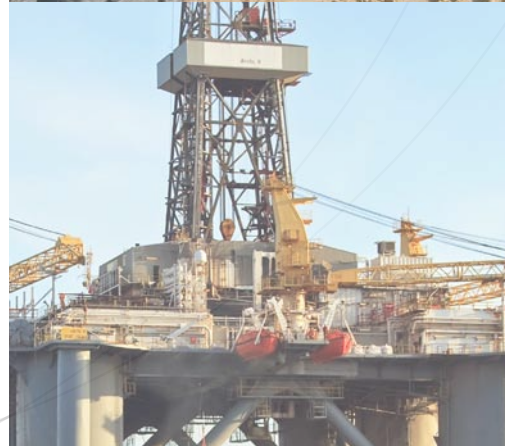


Test & Measurement

Wherever fluid technology requires to be shut off, switched or controlled, wherever lines and components are to be mounted and wherever these need to be connected, coupled and damped, the comprehensive range of HYDAC Accessories provides suitable components to every standard from one supplier, on call-off.

Precision. Quality. Durability.
Measure up with the best.

Measure with **HYDAC**



GLOBAL PRESENCE. LOCAL COMPETENCE.



1300 449 322
www.hydac.com.au



AUSTRALIA

Melbourne - Head Office
109-111 Dohertys Road
Altona North. VIC. 3025
Tel: (03) 9272 8900
Fax: (03) 9369 8912
Email: info@hydac.com.au

Queensland
Unit 2, 26 Crockford Street
Banyo. QLD. 4014
Tel: (07) 3634 4500
Fax: (07) 3260 7800

New South Wales
Unit 1, 3 Bosci Road
Ingleburn. NSW. 2565
Tel: (02) 9605 3288
Fax: (02) 9605 3488

Perth
42 Millrose Drive
Malaga. WA. 6090
Tel: (08) 9209 2344
Fax: (08) 9209 2355

NEW ZEALAND

Auckland
Unit 14 13 Highbrook Drive,
East Tamaki. Auckland,
Tel: +64 9 271 4120
Fax: +64 9 271 4124
Email: info@hydac.co.nz
Web: www.hydac.co.nz