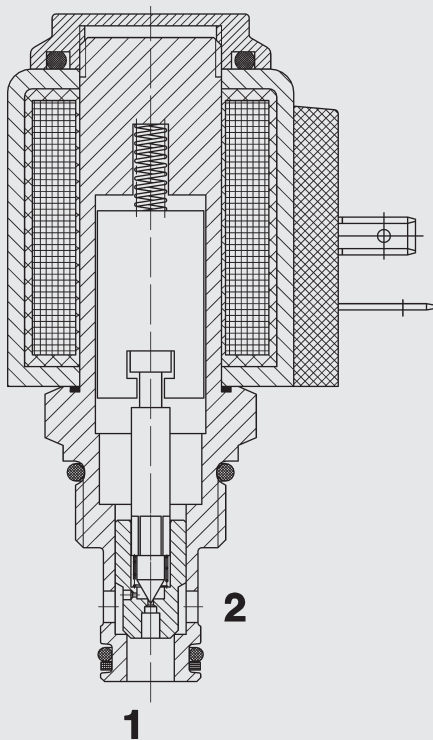


## FUNCTION



In the de-energized mode, the valve blocks flow from port 2 to 1 and acts as a check allowing flow from 1 to 2.

When energized, the valve allows flow from port 2 to 1. Flow from 1 to 2 is severely restricted in this mode.

## Solenoid Directional Valve SAE 8-Cartridge - 350 bar 2/2-Normally Closed

**UNF**

WS08Z-01

Poppet Type - Pilot Operated

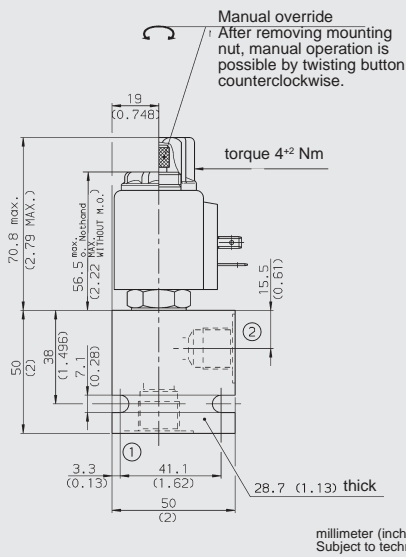
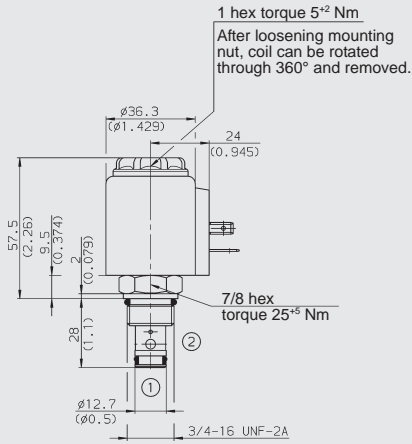
## FEATURES

- All surfaces zinc-plated and corrosion-proof
- All valve parts made of high-strength steel with hardened and ground components to ensure minimal wear and extended service life
- Coil seals protect the solenoid system
- Wide variety of coils and connectors available
- Rigid design using one-piece body minimizes the effect of eccentricities in cavity and maximizes reliability
- Excellent switching performance by high power HYDAC solenoid
- Low pressure drop due to CFD optimized flow path

## SPECIFICATIONS

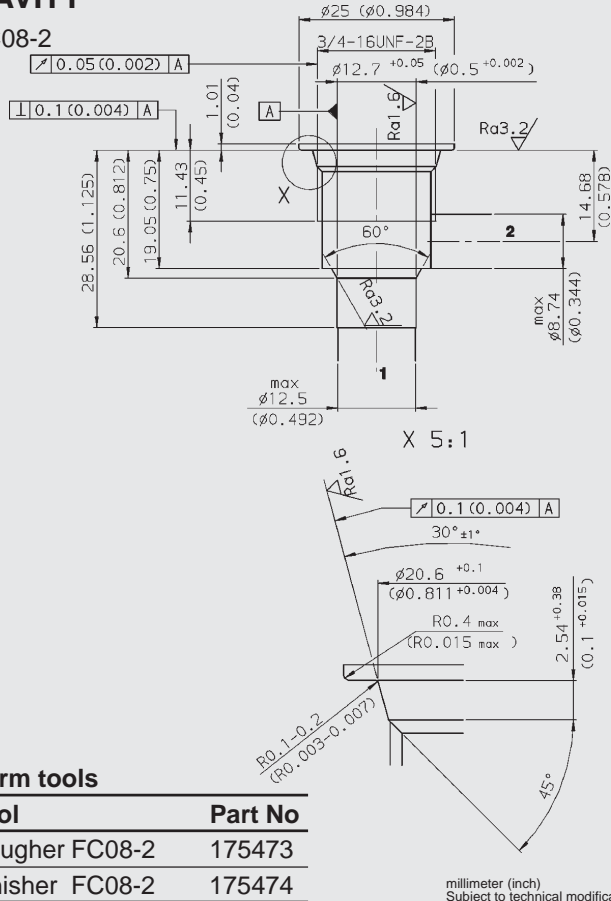
Operating pressure:	350 bar
Proof pressure:	520 bar
Nominal flow:	38 l/min
Internal leakage:	leakage free (less than 5 drops/min) max. at 350 bar
Media operating temp. range:	- 20 °C to + 120 °C
Ambient temp. range:	- 20 °C to + 60 °C
Fluids:	Mineral-based or synthetics with lubricating properties
Viscosity:	7.4 to 420 cSt
Filtration:	Class 21/19/16 according to ISO 4406 or cleaner
Installation:	optional
Material:	Valve body: high tensile steel Piston: hardened and ground steel Seals: NBR (Standard) FKM (Option) Coil: Steel/Polyamide
Cavity:	FC08-2
Weights:	Valve complete: 0.33 kg Coil only: 0.19 kg
Response time:	Energized: 35 ms De-energized: 50 ms typical 24 V DC-coil
Type of voltage:	DC solenoid, AC voltage is rectified using a bridge rectifier built into the coil
Current draw at 20 °C:	1.5 amps at 12 V DC 0.8 amps at 24 V DC
Pull-in voltage:	± 15 % of nominal voltage
Coil duty rating:	Continuous up to 115 % of nominal voltage at 60 °C ambient temperature

## DIMENSIONS



## CAVITY

FC08-2



### Form tools

Tool	Part No
Rougher FC08-2	175473
Finisher FC08-2	175474

## MODEL CODE

WS08Z-01 M - C - N - 24 DG

Basic Model

Option

Omission = No option  
M = Manual override

Body and Ports\*

C = Cartridge Only  
SB3 = 3/8 BSP ports, steel body  
AB3 = 3/8 BSP ports, aluminium body

Seals

N = NBR (standard)  
V = FKM (optional)

Coil Voltage

DC

12 = 12 V DC  
24 = 24 V DC

AC (internally full wave rectified)

115 = 115 V AC  
230 = 230 V AC

other voltages on request

Coil Connector

DC: DG = Connector to EN 175301-803  
DK = Kostal threaded connector  
DL = with 2 flying leads: 0.75 mm<sup>2</sup>  
DN = Deutsch connector, 2 pole  
DT = AMP Junior Timer connector, 2 pole radial  
AC: AG = Connector to EN 175301-803  
other connectors on request

## Standard models

Model code	Part no.
WS08Z-01-C-N-24DG	561579
WS08Z-01-C-N-230AG	3043403

other models on request

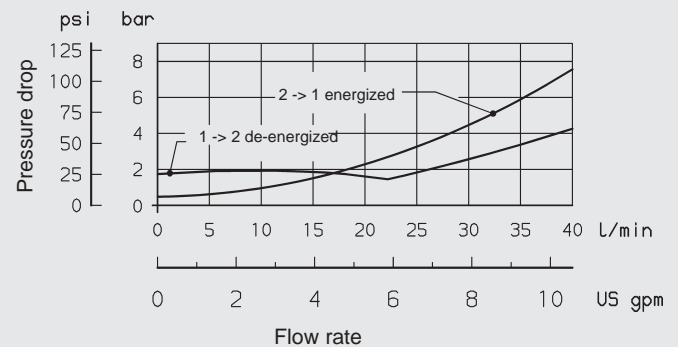
## \* Inline connection housings

Code	Part No	Material	Ports	Pressure
FH082-SB3	560919	Steel, zinc-plated	3/8 BSP	420 bar
FH082-AB3	3011423	Aluminium, clear anodized	3/8 BSP	245 bar

other housings on request

## PERFORMANCE (Cartridge Only)

Measured at 34 mm<sup>2</sup>/s  
T<sub>oil</sub> = 46 °C



## NOTE

The information in this brochure relates to the operating conditions and applications described. For applications or operating conditions not described, please contact the relevant technical department. Subject to technical modifications.

**HYDAC Fluidtechnik GmbH**  
Justus-von-Liebig-Str.  
D-66280 Sulzbach/Saar  
Tel: 0 68 97 /509-01  
Fax: 0 68 97 /509-598  
E-Mail: flutec@hydac.com