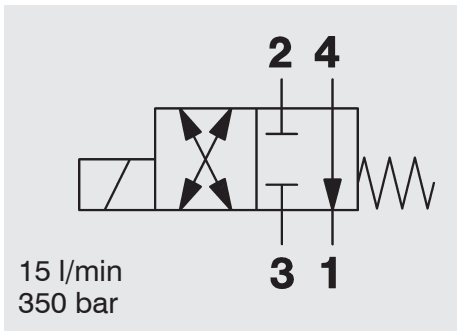
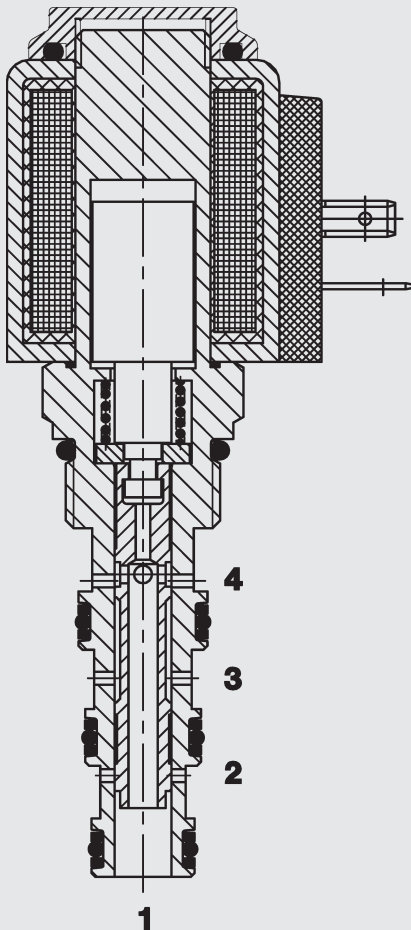


4/2-Solenoid Directional Valve UNF SAE 8-Cartridge – 350 bar

WK08P-01
SPOOL Type - Direct Operated



FUNCTION



In the de-energized mode, the valve allows flow from 4 to 1, while blocking 2 and 3.

When energized, the valve allows flow from 3 to 4 or 4 to 3 and from 2 to 1.

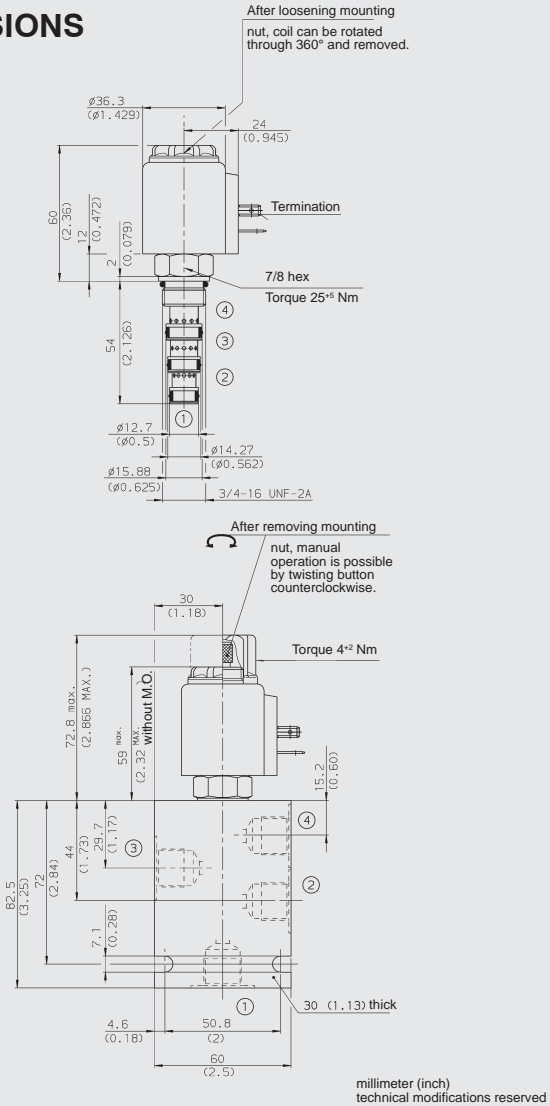
FEATURES

- All surfaces zinc-plated and corrosion-proof
- All valve parts made of high-strength steel with hardened and ground components to ensure minimal wear and extended service life
- Coil seals protect the solenoid system
- Wide variety of connectors available
- Rigid design using one-piece body minimizes the effect of eccentricities in cavity and maximizes reliability
- Excellent switching performance by high power HYDAC solenoid
- Low pressure drop by CFD optimized flow-path

SPECIFICATIONS

Operating pressure:	350 bar
Proof pressure:	520 bar
Nominal flow:	15 l/min Consult manufacturer for flow ratings above 207 bar
Internal leakage:	90 cm ³ /min max at 250 bar and 34 mm ² /s
Media operating temp. range:	-20 °C to +120 °C
Ambient temp. range:	-20 °C to +60 °C
Coil duty rating:	Continuous up to 115% of nominal voltage at 60 °C, ambient temperature
Current draw at 20 °C:	1.5 amps at 12 V DC 0.8 amps at 24 V DC
Minimum pull-in voltage:	85 % of nominal
Fluids:	Mineral-based or synthetics with lubricating properties
Viscosity:	7.4 to 420 mm ² /s
Filtration:	Class 21/19/16 according to ISO 4406 or cleaner
Material:	Valve body: carbon steel Spool: carbon steel Seals: NBR (standard) FKM (optional) Steel/Polyamide
	Coil: Steel/Polyamide
Cavity:	FC08-4
Weights:	Valve complete: 0.38 kg Coil only: 0.19 kg

DIMENSIONS



MODEL CODE

WK08P-01 M - C - N - 24 DG

Basic Model

Option

Omission = No Option
M = Manual Override

Body and Ports*

C = Cartridge only
SB3 = 3/8 BSP ports, steel body
SS6 = SAE-6 ports, steel body
AB3 = 3/8 BSP ports, aluminium body
AS6 = SAE-6 ports, aluminium body

Seals

N = NBR
V = FKM

Coil Voltage

DC
12 = 12 V DC
24 = 24 V DC

AC (internally full wave rectified)

115 = 115 V AC
230 = 230 V AC
(other voltages on request)

Coil Connector

DC: DG = Connector to EN 175301-803
DK = Kostal threaded connector
DL = Connector with 2 flying leads, 0.75mm²
DN = Deutsch connector
DT = AMP Junior Timer plug: 2 pole radial

AC: AG = DIN Connector (EN 175301-803)
(other connectors on request)

Standard models

Model code	Stock no.
WK08P-01-C-N-24DG	3021285
WK08P-01-C-N-230AG	3043980

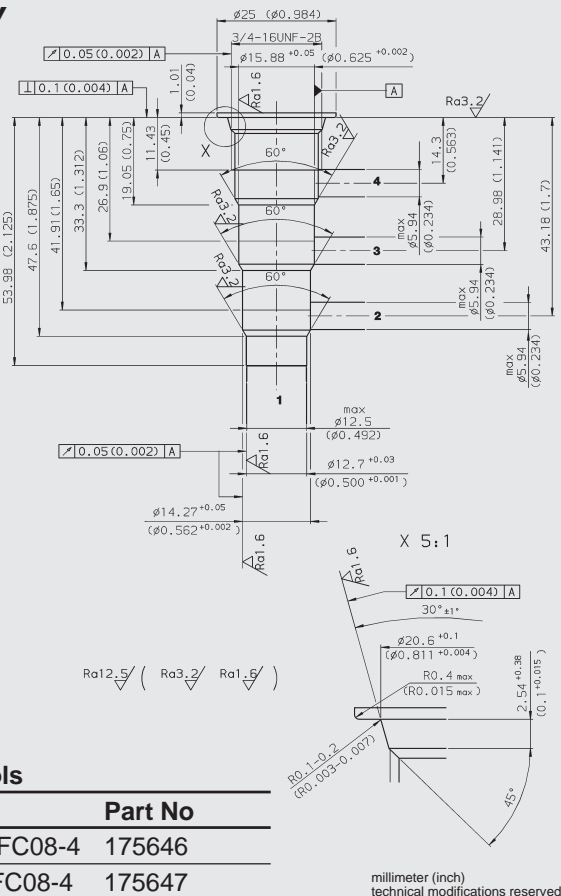
other models on request

* Standard Line Bodies

Code	Part No	Material	Ports	Pressure
FH084-SB3	563383	Steel, zinc-plated	3/8 BSP	420 bar
FH084-SS6	563381	Steel, zinc-plated	SAE-6	420 bar
FH084-AB3	3011407	Aluminium, clear anodized	3/8 BSP	245 bar
FH084-AS6	3011404	Aluminium, clear anodized	SAE-6	245 bar

CAVITY

FC08-4

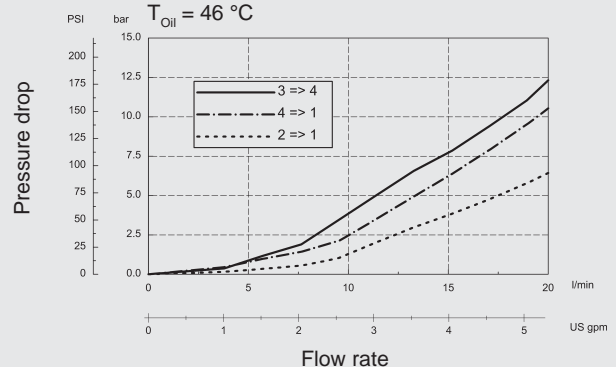


Form tools

Tool	Part No
Rougher FC08-4	175646
Finisher FC08-4	175647

PERFORMANCE (Cartridge Only)

Measured at 34 mm²/s
T_{Oil} = 46 °C



NOTE

The information in this brochure relates to the operating conditions and applications described. For applications or operating conditions not described, please contact the relevant technical department. Subject to technical modifications.

HYDAC Fluidtechnik GmbH
Justus-von-Liebig-Str.
D-66280 Sulzbach/Saar
Tel: 0 68 97 /509-01
Telefax: 0 68 97 /509-598
E-Mail: flutec@hydac.com