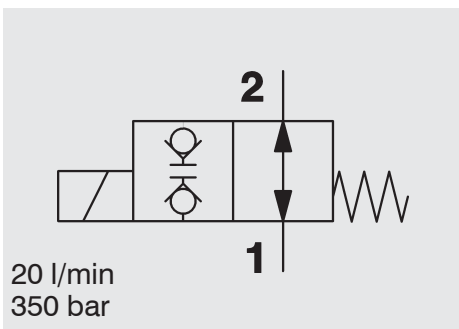


Solenoid Directional Valve SAE 8-Cartridge – 350 bar

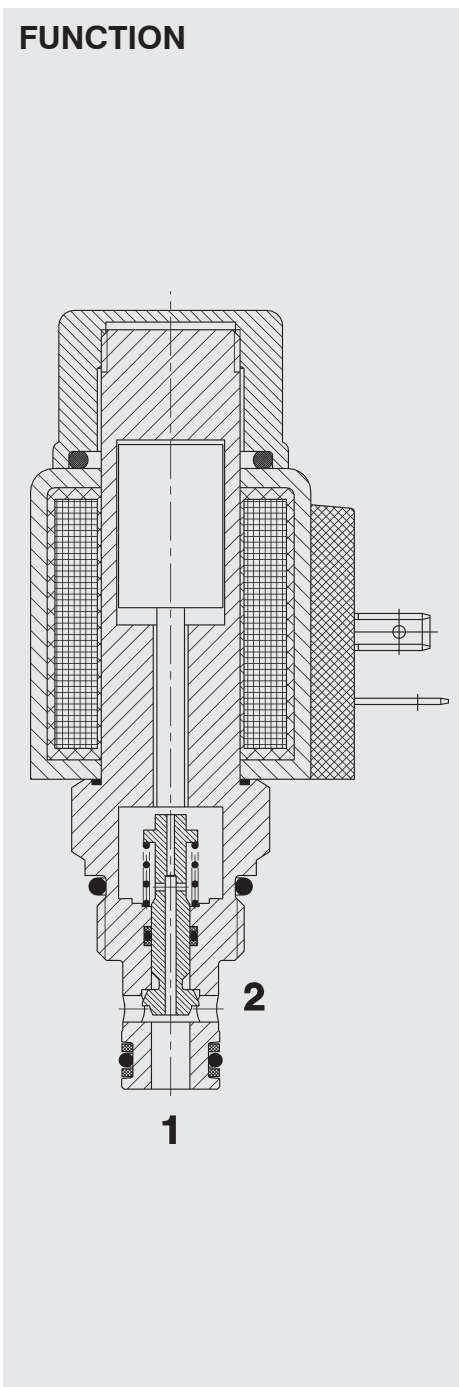
2/2 Normally Open (double blocking)

WS08V-01

Poppet Type - Direct Operated



FUNCTION



In the de-energized mode, the valve allows flow in both directions.

When energized, the valve blocks flow in both directions.

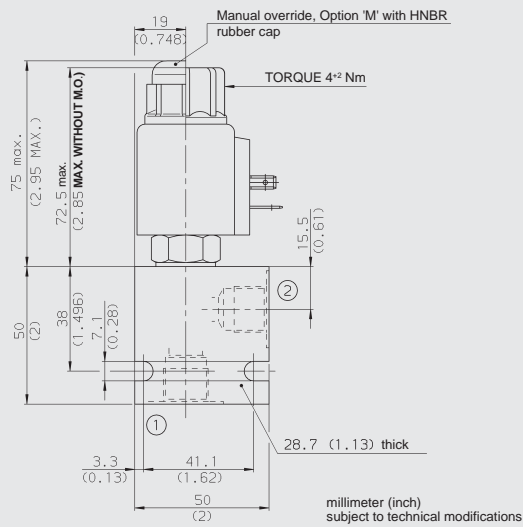
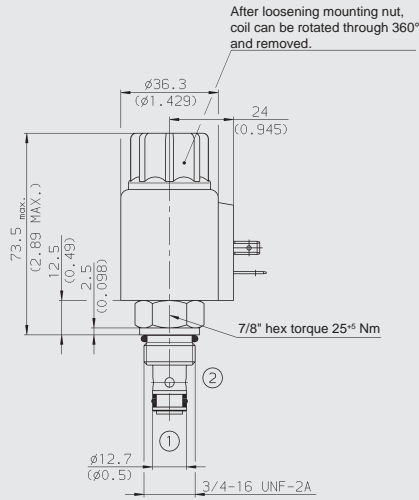
FEATURES

- Excellent switching performance by high power HYDAC solenoid
- All valve parts made of high-strength steel with hardened and ground components to ensure minimal wear and to extend service life
- Rigid design using one-piece body minimizes the effect of eccentricity and maximizes reliability
- All surfaces zinc-plated and corrosion-proof
- Waterproof design standard
- Wide variety of connectors available
- Low pressure drop by CFD optimized flow-path

SPECIFICATIONS

Operating pressure:	350 bar
Proof pressure:	520 bar
Nominal flow:	20 l/min
Internal leakage:	leakfree (less than 5 drops/min) at 350 bar
Media operating temp. range:	-20 °C to +120 °C
Ambient temp. range:	-20 °C to +60 °C
Coil duty rating:	Continuous from 85% to 115% of nominal voltage
Current draw at 20 °C:	1.5 A at 12 V DC 0.8 A at 24 V DC
Minimum pull-in voltage:	85 % of nominal
Response time:	Energized: 35 ms De-energized: 50 ms typical 24 V DC-coil
Fluids:	Mineral-based or synthetics with lubricating properties
Viscosity:	7.4 to 420 cSt
Filtration:	Class 21/19/16 according to ISO 4406 or cleaner
Installation:	No orientation restrictions
Material:	Valve body: carbon steel Piston: hardened and polished steel Seals: NBR (standard) FKM (optional) Coil: Steel/Polyamide
Cavity:	FC08-2
Weights:	Valve complete: 330 g Coil only: 190 g

DIMENSIONS



MODEL CODE

WS08V-01 M - C - N - 24 DG

Basic Model

Option
 Omission = No Option
 M = Manual Override

Body and Ports*

C = Cartridge only
 SB3 = 3/8 BSP ports, steel body
 SS6 = SAE-6 ports, steel body
 AB3 = 3/8 BSP ports, aluminium body
 AS6 = SAE-6 ports, aluminium body

Seals

N = NBR
 V = FKM

Coil Voltage

DC

10 = 10 V DC
 12 = 12 V DC
 24 = 24 V DC
 36 = 36 V DC
 48 = 48 V DC
 110 = 110 V DC available with DG termination only

AC (internally full wave rectified)

24 = 24 V AC
 115 = 115 V AC
 230 = 230 V AC

Coil Connector

DC: DG = DIN Connector (EN 175301-803)
 DS = Dual Spade SAEJ858a
 DL = Leadwires (2) - 457mm (18") long
 DW = Weather Pack Connector on leadwires - 241 mm (9.5") long
 DK = Kostal connector
 DT = 2-pole AMP Junior Timer plug

AC: AG = DIN Connector (EN 175301-803)

Standard models

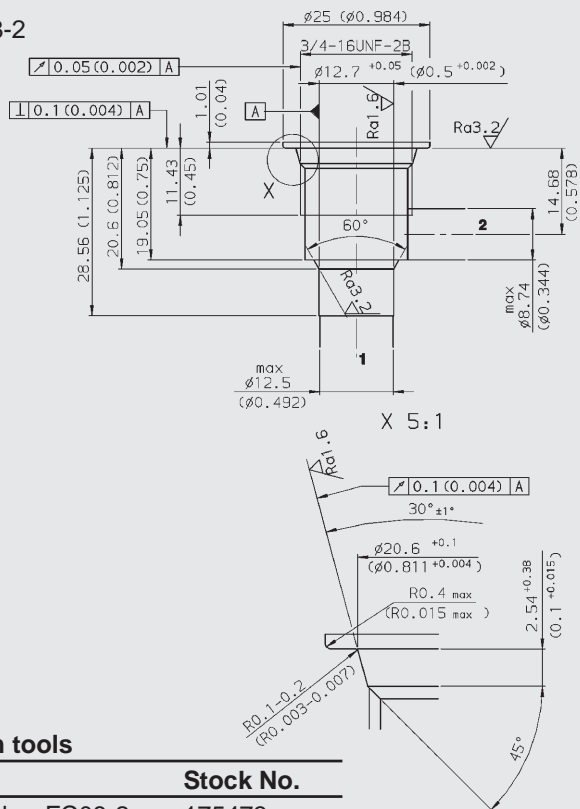
Model code	Stock no.
WS08V-01-C-N-24DG	3138653
WS08V-01-C-N-230AG	3138654

* Standard Line Bodies

Code	Stock no.	Material	Ports	Pressure
FH082-SB3	560919	Steel, zinc-plated	3/8 BSP	420 bar
FH082-SS6	560917	Steel, zinc-plated	SAE-6	420 bar
FH082-AB3	3011423	Aluminium, clear anodized	3/8 BSP	245 bar
FH082-AS6	3011409	Aluminium, clear anodized	SAE-6	245 bar

CAVITY

FC08-2



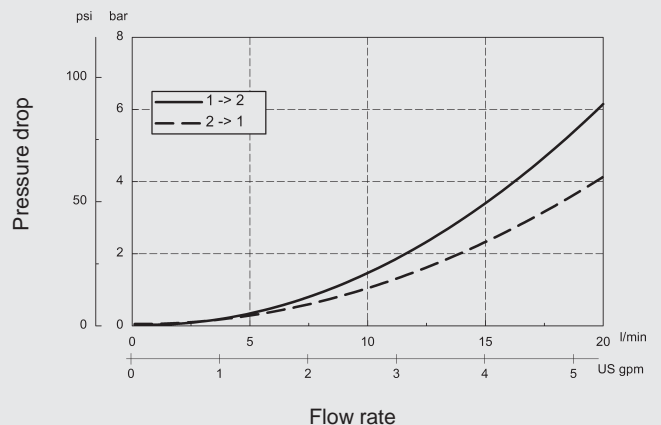
Form tools

Tool	Stock No.
Rougher FC08-2	175473
Finisher FC08-2	175474

PERFORMANCE

Measured at 34 cSt
 T_{oil} = 46°C

PRESSURE DROP



NOTE

The information in this brochure relates to the operating conditions and applications described.
 For applications or operating conditions not described, please contact the relevant technical department.
 Subject to technical modifications.

HYDAC Fluidtechnik GmbH
 Justus-von-Liebig-Str.
D-66280 Sulzbach/Saar
 Tel: 0 68 97 /509-01
 Telefax: 0 68 97 /509-598
 E-Mail: flutec@hydac.com