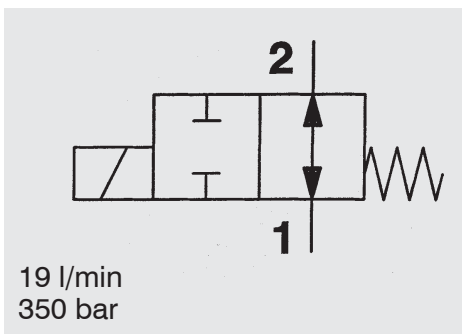


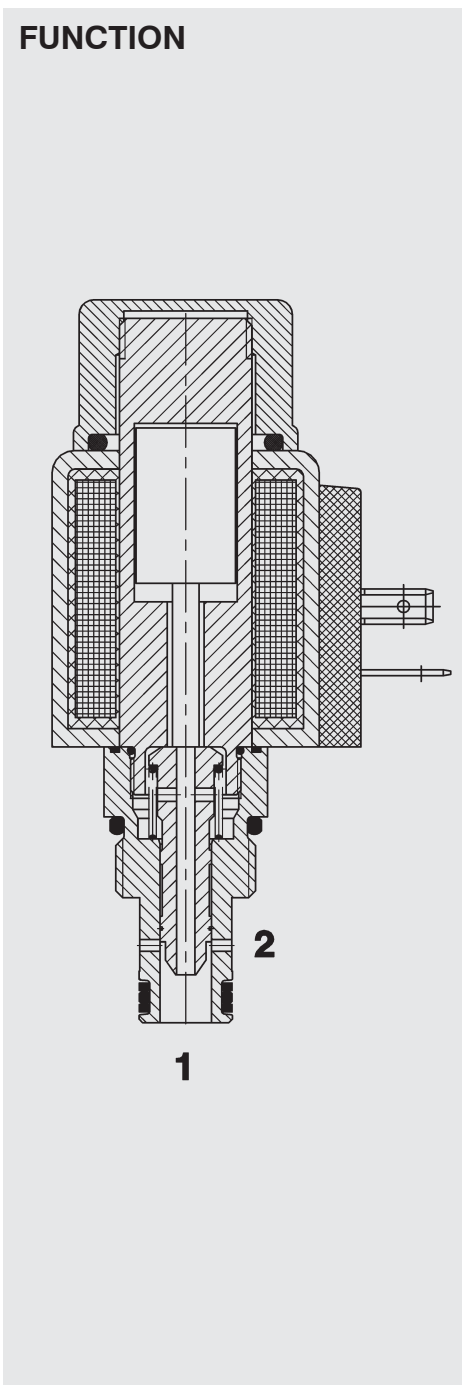
2/2-Solenoid Directional Valve UNF SAE 8-Cartridge - 350 bar

WK08V-01
SPOOL Type - Direct Operated



19 l/min
350 bar

FUNCTION



In the de-energized mode, the valve allows flow in both directions. When energized, the valve blocks flow bidirectionally.

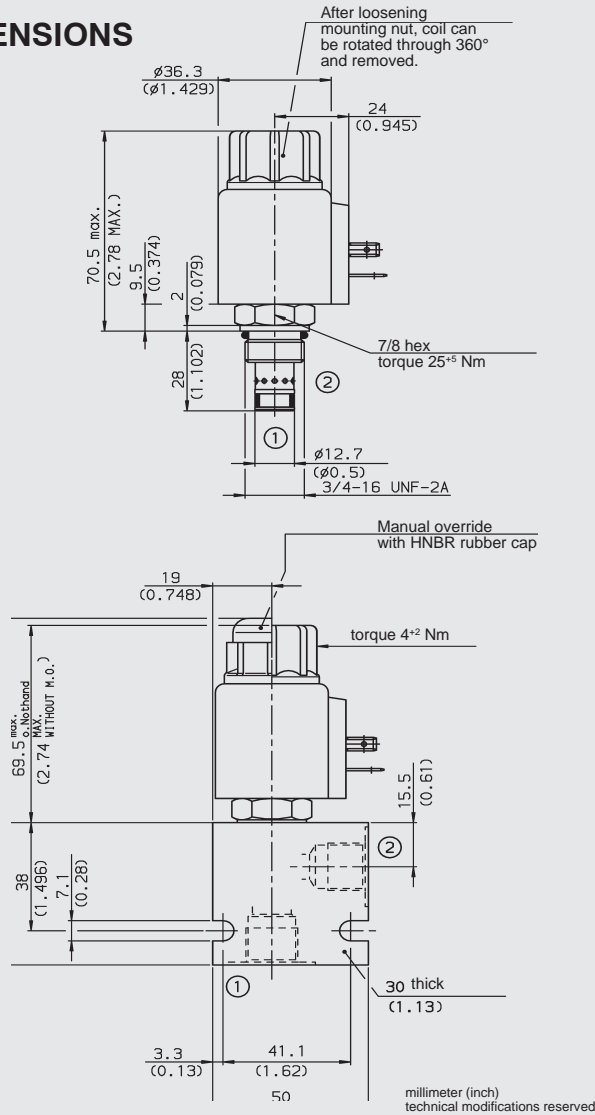
FEATURES

- All surfaces zinc-plated and corrosion-proof
- All valve parts made of high-strength steel with hardened and ground components to ensure minimal wear and extended service life
- Coil seals protect the solenoid system
- Wide variety of connectors available
- Rigid design using one-piece body minimizes the effect of eccentricities in cavity and maximizes reliability
- Excellent switching performance by high power HYDAC solenoid
- Low pressure drop due to CFD optimized flow-path

SPECIFICATIONS

Operating pressure:	350 bar
Proof pressure:	520 bar
Nominal flow:	19 l/min
Internal leakage:	90 cm ³ /min max at 250 bar and 34 mm ² /s
Media operating temp. range:	-20 °C to +120 °C
Ambient temp. range:	-20 °C to +60 °C
Fluids:	Hydraulic oil to DIN 51524 Part 1 and 2
Viscosity:	7.4 to 420 mm ² /s
Filtration:	Class 21/19/16 according to ISO 4406 or cleaner
Installation:	optional
Material:	Valve body: high tensile steel Spool: hardened and ground steel Seals: NBR (standard) FKM (optional) Coil: Steel/Polyamide
Cavity:	FC08-2
Weights:	Valve complete: 0.36 kg Coil only: 0.19 kg
Type of voltage	DC solenoid, AC voltage is rectified by a bridge rectifier built into the coil
Current draw at 20 °C:	1.5 A at 12 V DC 0.8 A at 24 V DC
Voltage tolerance:	± 15 % of nominal voltage
Switch-on time:	Continuous up to 115 % of nominal voltage at 60 °C ambient temperature

DIMENSIONS



MODEL CODE

WK08V-01 M - C - N - 24 DG

Designation
 Directional spool valve UNF
 Cavity 08
 Function code V
 Type 01 = standard

Option
 Omission = No option
 M = Manual override

Body and Ports*
 C = Cartridge Only
 SB3= 3/8 BSP ports, steel body
 AB3= 3/8 BSP ports, aluminium body

Seals
 N = NBR
 V = FKM

Coil Voltage
DC
 12 = 12 V DC
 24 = 24 V DC

AC (internally full wave rectified)
 115 = 115 V AC
 230 = 230 V AC

Coil Connector
 DC: DG = DIN Connector to EN 175301-803
 DK = Kostal connector
 DL = Leadwires (2) - 457mm (18") long
 DN = Deutsch Connector 2 pole
 DT = 2-pole AMP Junior Timer plug
 AC: AG = DIN Connector to EN 175301-803

Standard models

Model code	Part no.
WK08V-01-C-N-24DG	3020235
WK08V-01-C-N-230AG	3044018

other models on request

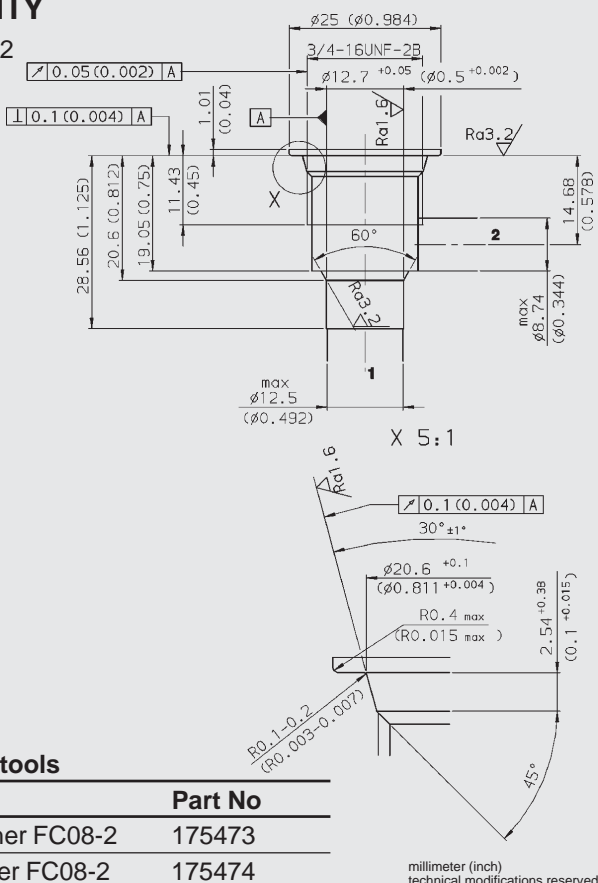
Inline connection housings

Code	Part No	Material	Ports	Pressure
FH082-SB3	560919	Steel, zinc-plated	3/8 BSP	420 bar
FH082-AB3	3011423	Aluminium, clear anodized	3/8 BSP	245 bar

other housings on request

CAVITY

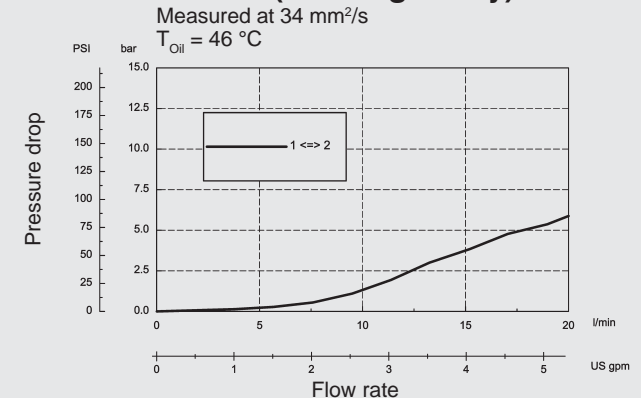
FC08-2



Form tools

Tool	Part No
Rougher FC08-2	175473
Finisher FC08-2	175474

PERFORMANCE (Cartridge Only)



NOTE

The information in this brochure relates to the operating conditions and applications described. For applications or operating conditions not described, please contact the relevant technical department. Subject to technical modifications.

HYDAC Fluidtechnik GmbH
 Justus-von-Liebig-Str.
D-66280 Sulzbach/Saar
 Tel: 0 68 97 /509-01
 Fax: 0 68 97 /509-598
 E-Mail: flutec@hydac.com