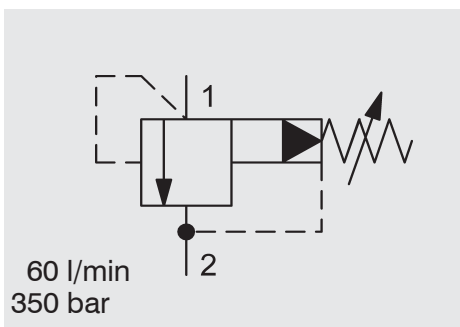


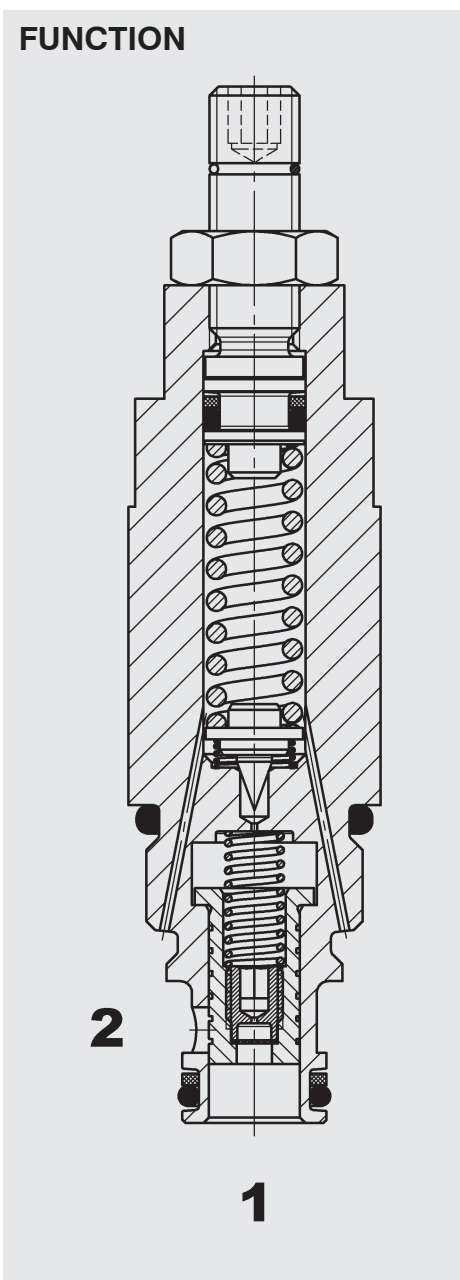
## Pressure Relief Valve SAE 8-Cartridge – 350 bar

DB08P-01

Spool Type – Pilot Operated



### FUNCTION



The DB08P is a pilot-operated pressure relief valve. If pressure at port 1 exceeds the pressure setting the pilot poppet opens, creating a small flow across the orifice in the main spool. The pressure drop over the orifice lifts the main spool against a light spring, opening a connection from port 1 to port 2.

### FEATURES

- All surfaces zinc-plated and corrosion proof
- All valve parts made of high-strength steel with hardened and ground components to ensure minimal wear and to extend service life
- Rigid design using one-piece body minimizes the effect of eccentricity and maximizes reliability
- Excellent stability throughout flow range
- Low pressure drop by CFD optimized flow-path
- Screen protected measuring orifice enhances safety
- Optional spring ranges up to 345 bar
- Adjustable across entire pressure range
- Quick response
- Compact design

### SPECIFICATIONS

|                                    |  |
|------------------------------------|--|
| Operating pressure:                | 350 bar  |
| Nominal flow:                      | 60 l/min   |
| Operating pressure ranges:         | up to 35 bar<br>up to 60 bar<br>up to 125 bar<br>up to 230 bar<br>up to 345 bar            |
| Internal leakage:                  | less than 0.5 l/min at 350 bar   |
| Media operating temperature range: | -20 °C to +120 °C  |
| Ambient temperature range:         | -20 °C to +80 °C   |
| Fluids:                            | Mineral-based or synthetics with lubricating properties                                    |
| Viscosity:                         | 7.4 to 420 cSt   |
| Filtration:                        | Class 21/19/16 according to ISO 4406 or cleaner  |
| Installation:                      | No orientation restrictions  |
| Material:                          | Valve body: carbon steel<br>Spool: carbon steel<br>Seals: NBR (standard)<br>FKM (optional) |
| Cavity:                            | FC08-2   |
| Weight:                            | 140 g  |

