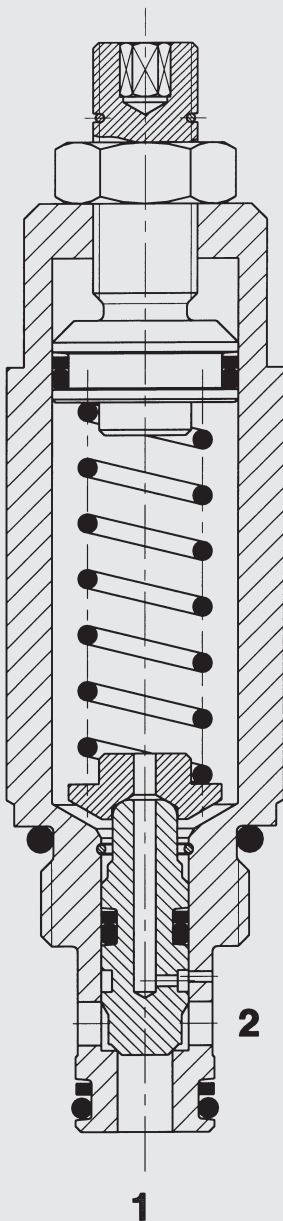


FUNCTION



The DB08A blocks flow from 1 to 2 until sufficient pressure is present at 1 to lift the spring-opposed poppet from its seat, allowing relief flow to tank from 2.

Pressure Relief Valve SAE 8-Cartridge - 420 bar

DB08A-01

Poppet Type - Direct Acting

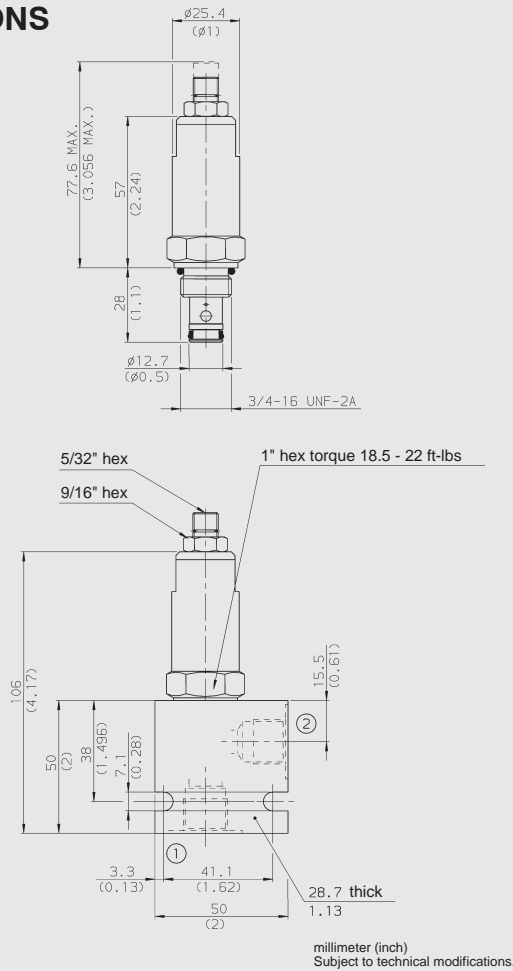
FEATURES

- All surfaces zinc-plated and corrosion-proof
- Good stability throughout flow range
- Stroke-arresting device
- Adjustable across entire pressure range
- Optional spring ranges to 420 bar
- Quick response
- Compact design
- All valve parts made of high-strength steel with hardened and ground components to ensure minimal wear and to extend service life.

SPECIFICATIONS

Operating pressure:	420 bar
Nominal flow:	38 l/min
Operating pressure ranges:	up to 34.5 bar up to 62.0 bar up to 124.0 bar up to 227.5 bar up to 350.0 bar up to 420.0 bar
Media operating temp. range:	- 20 °C to + 120 °C
Fluids:	Mineral-based or synthetics with lubricating properties
Viscosity:	7.4 to 420 cSt
Filtration:	Class 21/19/16 according to ISO 4406 or cleaner
Installation:	No orientation restrictions
Material:	Valve body: carbon steel Poppet: carbon steel Seals: NBR (Standard) FKM (Option)
Internal leakage:	0.25 cc/min max. to 80% of nominal setting
Cavity:	FC08-2
Weight:	220 g

DIMENSIONS



MODEL CODE

DB08A-01 - C - N - 330 V 300

Basic Cartridge

Body and Ports*

C = Cartridge only
 SB3 = 3/8 BSP ports, steel body
 SS6 = SAE-6 ports, steel body
 AB3 = 3/8 BSP ports, aluminium body
 AS6 = SAE-6 ports, aluminium body

Seals

N = NBR
 V = FKM

Spring range

050 = up to 34.5 bar
 090 = up to 62.0 bar
 180 = up to 124.0 bar
 330 = up to 227.5 bar
 500 = up to 345.0 bar
 600 = up to 420.0 bar

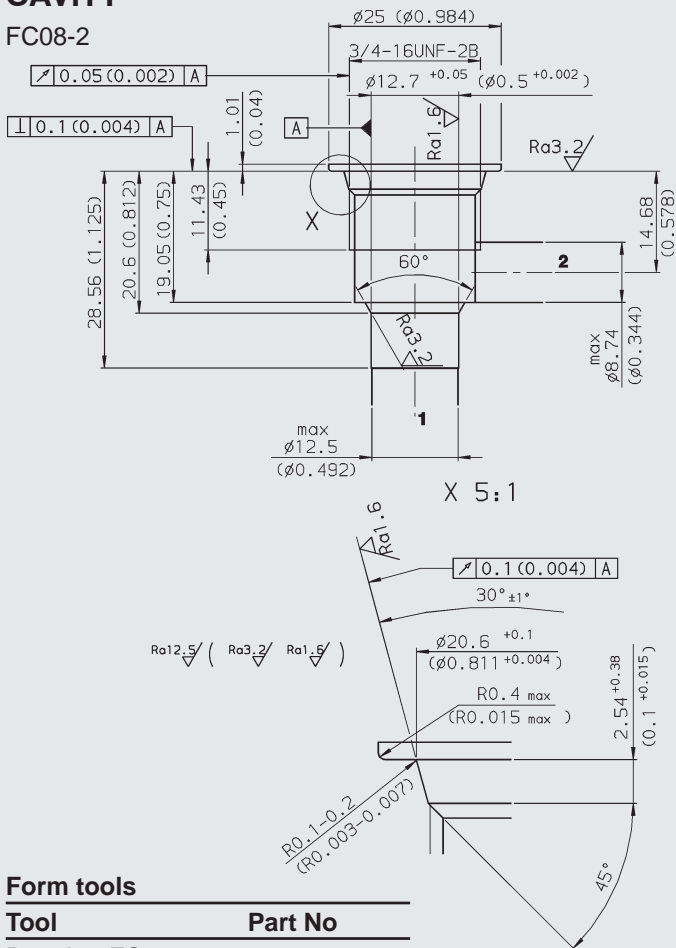
Adjustment option

V = Allen head (Hex 5/32")
 H = Knob adjustment
 F = Factory preset, non-adjustable, in preparation

Setting

CAVITY

FC08-2



Form tools

Tool	Part No
Rougher FC08-2	175473
Finisher FC08-2	175474

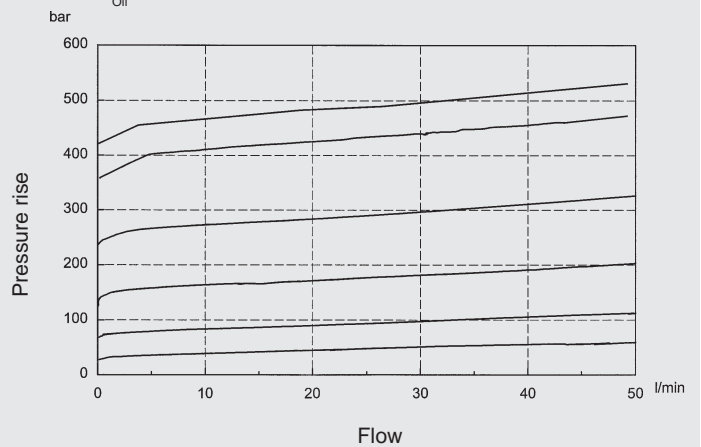
millimeter (inch)
 Subject to technical modifications.

* Standard Line Bodies

Code	Part No	Material	Ports	Pressure
FH082-SB3	560 919	Steel, zinc-plated	3/8 BSP	420 bar
FH082-SS6	560 917	Steel, zinc plated	SAE-6	420 bar
FH082-AB3	3011423	Aluminium, clear anodized	3/8 BSP	245 bar
FH082-AS6	3011409	Aluminium, clear anodized	SAE-6	245 bar

PERFORMANCE (Cartridge Only)

Measured at 34 cSt
 $T_{oil} = 46\text{ }^{\circ}\text{C}$



NOTE

The information in this brochure relates to the operating conditions and applications described. For applications or operating conditions not described, please contact the relevant technical department. Subject to technical modifications.

HYDAC Fluidtechnik GmbH
 Justus-von-Liebig-Str.
D-66280 Sulzbach/Saar
 Tel: 0 68 97 /509-01
 Telefax: 0 68 97 /509-598
 E-Mail: flutec@hydac.com