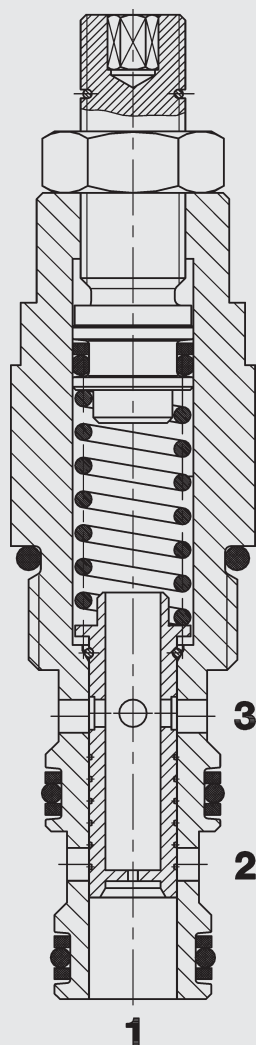


FUNCTION



The SRP08 maintains a constant outlet flow at port 3 regardless of pressure changes downstream on regulated port 3 or bypass port 2. The flow range is determined by a fixed measuring orifice and can be adjusted within a limited range. Excess flow is diverted to the secondary line which can be used independently. If port 2 is closed the valve acts as a restrictive flow regulator. If port 3 is closed the valve will stay closed because there is no flow/no pressure differential over the piston.

Flow Regulator SAE 8-Cartridge - 350 bar

UNF

SRP08-01

Priority style – pressure compensated

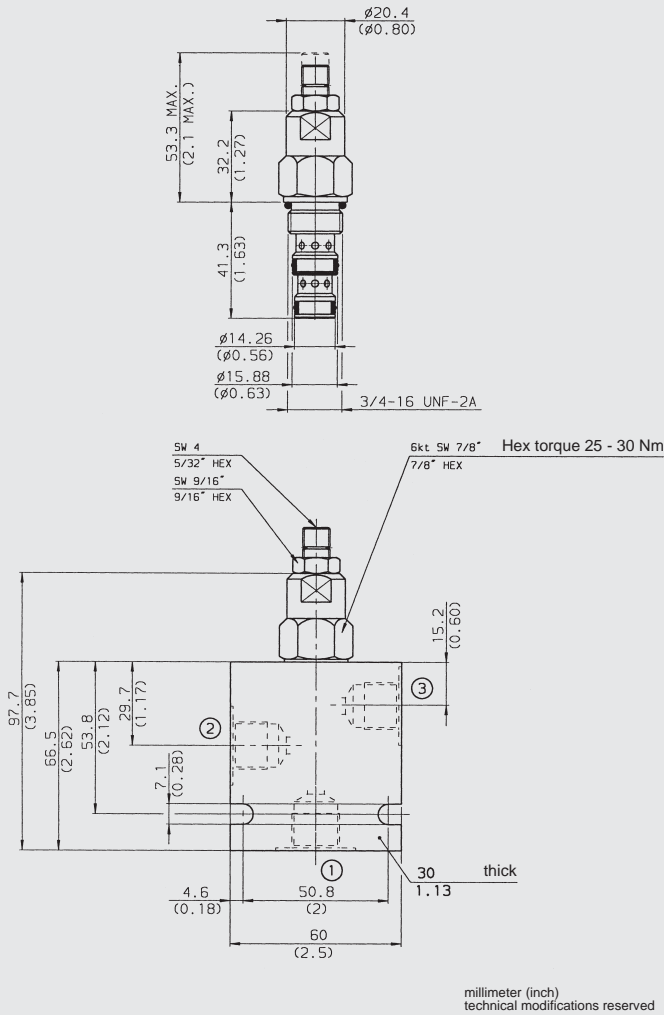
FEATURES

- Excellent stability throughout flow range
- All surfaces zinc-plated and corrosion-proof
- All valve parts made of high-strength steel with hardened and ground components to ensure minimal wear and extended service life
- Rigid design using one-piece-body minimizes the effect of eccentricity and maximizes reliability
- Low pressure drop by CFD optimized flow-path
- Optional flow ranges up to 30 l/min
- Limited flow adjustment
- Bypass flow can be pressurized for a working circuit

SPECIFICATIONS

Operating pressure:	350 bar
Nominal flow:	30 l/min
Flow ranges and accuracy:	1.3 – 1.8 l/min 1.6 – 2.5 l/min 2.0 – 3.7 l/min 3.5 – 6.5 l/min 6.0 – 12.5 l/min 8.8 – 20.8 l/min 13.5 – 30.0 l/min
Media operating temp. range:	-20 °C to +120 °C
Fluids:	Mineral-based or synthetics with lubricating properties
Viscosity:	7.4 to 420 mm ² /s
Filtration:	Class 21/19/16 according to ISO 4406 or cleaner
Material:	Valve body: carbon steel Spool: carbon steel Seals: NBR (Standard) FKM (Option) Support rings: PTFE
Cavity:	FC08-3
Weights:	0.126 kg

DIMENSIONS



MODEL CODE

SRP08-01 - C - N - 1.0 V 0.8

Basic Model

Body and Ports

C = Cartridge Only
 SB3 = 3/8 BSP ports, steel body
 AB3 = 3/8 BSP ports, aluminium body
 SAE/NPT bodies on request

Seals

N = NBR
 V = FKM

Flow Rate Code & Flow Range

0.4: 1.3 – 1.8 l/min
 0.5: 1.6 – 2.5 l/min
 0.9: 2.0 – 3.7 l/min
 1.6: 3.5 – 6.5 l/min
 3.0: 6.0 – 12.5 l/min
 5.5: 8.8 – 20.8 l/min
 7.9: 13.5 – 30.0 l/min

Adjustment Option

V = Allen head (HEX 5/32")
 H = Knob adjustment
 other adjustment options on request

Setting

Omission = adjusted to lowest value of flow range

Standard models

Model code	Part no.
SRP08-01-C-N-0.5V	3020780
SRP08-01-C-N-0.9V	3020781
SRP08-01-C-N-3.0V	3020823
SRP08-01-C-N-5.5V	3020824

other models on request

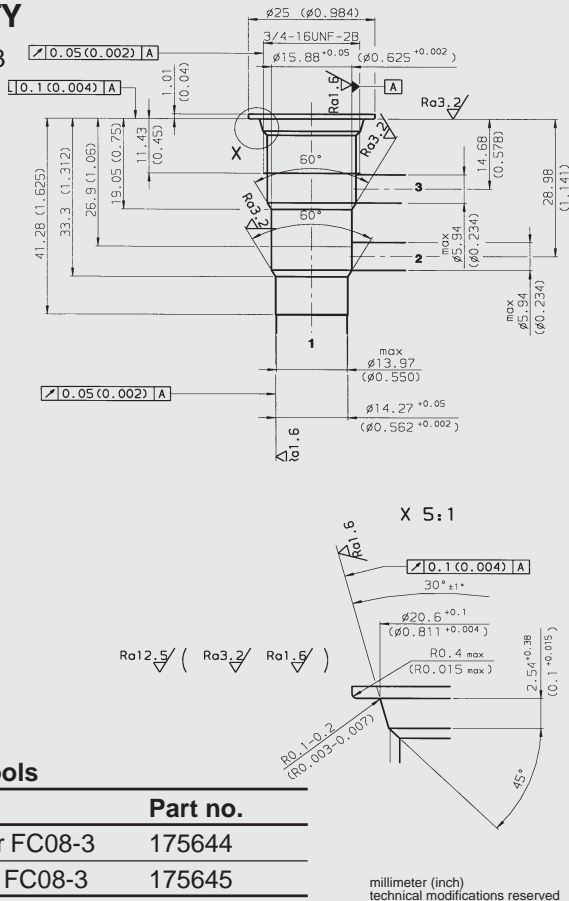
Inline connection housings

Code	Part no.	Material	Ports	Pressure
FH083-SB3	560922	Steel, zinc-plated	3/8 BSP	420 bar
FH083-AB3	3011427	Aluminium, clear anodized	3/8 BSP	245 bar

SAE/NPT housings on request

CAVITY

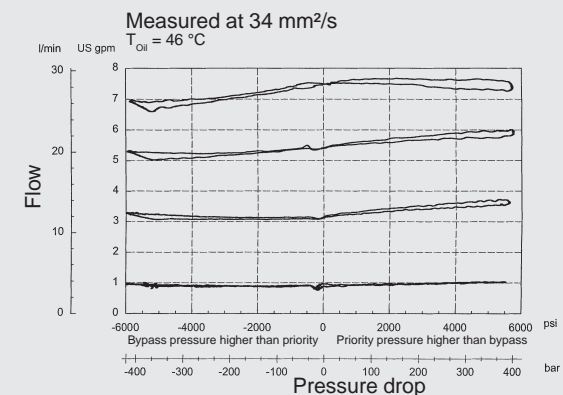
FC08-03



Form tools

Tool	Part no.
Rougher FC08-3	175644
Finisher FC08-3	175645

PERFORMANCE (Cartridge Only)



NOTE

The information in this brochure relates to the operating conditions and applications described. For applications or operating conditions not described, please contact the relevant technical department. Subject to technical modifications.

HYDAC Fluidtechnik GmbH
 Justus-von-Liebig-Str.
D-66280 Sulzbach/Saar
 Tel: 0 68 97 /509-01
 Telefax: 0 68 97 /509-598
 E-Mail: flutec@hydac.com