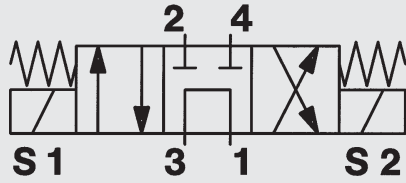


4/3-Solenoid Directional Valve Tandem Centre SAE 10-Cartridge – 350 bar

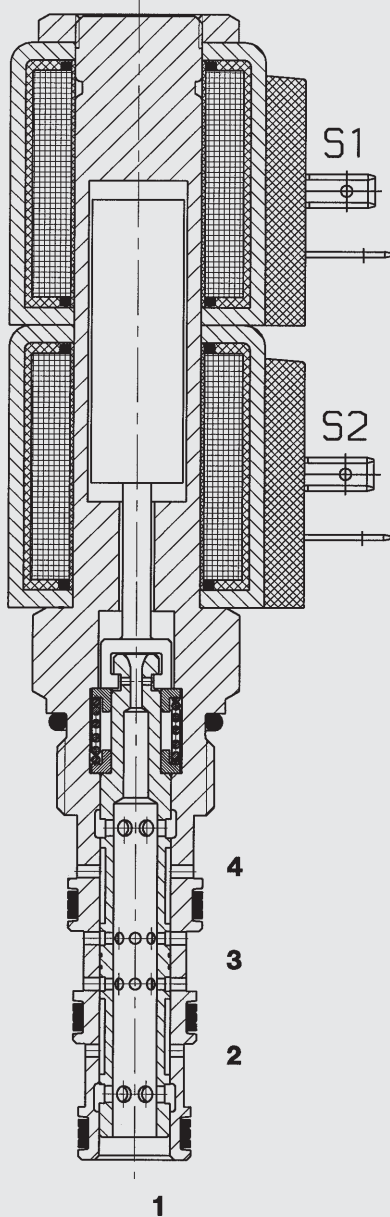
WK10G-01

SPOOL Type - Direct Operated



23 l/min
350 bar

FUNCTION



In the de-energized mode, the valve blocks ports 2 and 4, while allowing flow from 3 to 1.

When coil S1 is energized, flow is allowed from 3 to 2 and from 4 to 1.

When coil S2 is energized, flow is allowed from 3 to 4 and from 2 to 1.

FEATURES

- Wet armature solenoid
- Wide voltage tolerance
- Compact size
- All surfaces zinc-plated and corrosion-proof
- Waterproof design standard
- Wide variety of coils and connectors available
- One piece body design

SPECIFICATIONS

Operating pressure:	350 bar
Proof pressure:	520 bar
Nominal flow:	23 l/min Consult manufacturer for flow ratings above 207 bar
Internal leakage:	160 cm ³ /min max at 207 bar and 34 cSt
Media operating temp. range:	-20 °C to +120 °C
Ambient temp. range:	-20 °C to +60 °C
Coil duty rating:	Continuous from 90% to 115% of nominal voltage
Current draw at 20 °C:	1.5 amps at 12 V DC 0.8 amps at 24 V DC
Minimum pull-in voltage:	90 % of nominal
Fluids:	Mineral-based or synthetics with lubricating properties
Viscosity:	7.4 to 420 cSt
Filtration:	Class 21/19/16 according to ISO 4406 or cleaner
Material:	Valve body: carbon steel Spool: carbon steel Seals: NBR (standard) FKM (optional) Steel/Polyamide
Cavity:	FC10-4
Weights:	Valve complete: 670 g Coil only (2 required): 190 g

