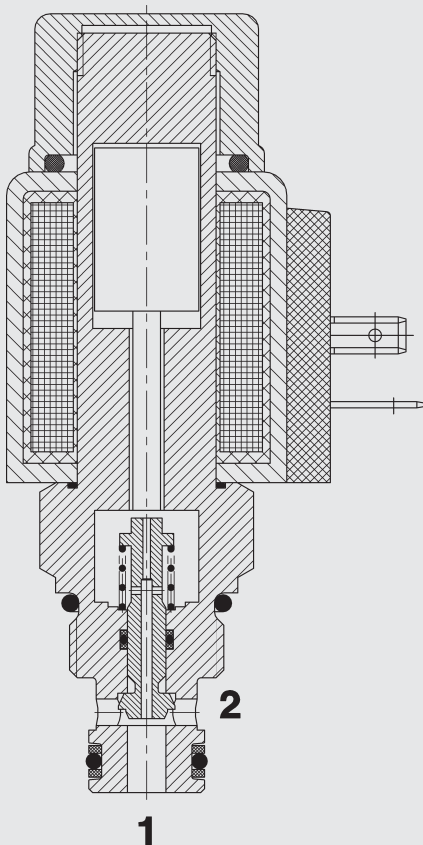


up to 20 l/min
up to 350 bar

FUNCTION



In the de-energized mode, the valve allows flow in both directions.

When energized, the valve blocks flow in both directions.

2/2 Solenoid Directional Valve Poppet Type - Direct Operated Normally Open Cartridge Valve – 350 bar

WSM06020V-01

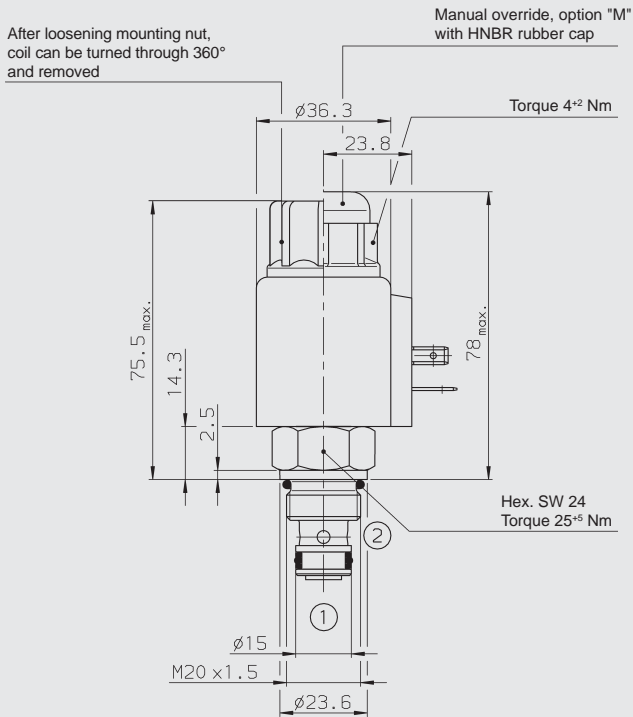
FEATURES

- All surfaces zinc-plated and corrosion-proof
- All valve parts made of high-strength steel with hardened and ground components to ensure minimal wear and extended service life
- Waterproof design standard
- Wide variety of connectors available
- Rigid design using one-piece body minimizes the effect of eccentricity and maximizes reliability
- Excellent switching performance by high power HYDAC solenoid
- Low pressure drop by CFD optimized flow-path

SPECIFICATIONS

Operating pressure:	Max. 350 bar
Nominal flow:	Max. 20 l/min
Internal leakage:	Leakage-free
Media operating temp. range:	-20 °C to +120 °C
Ambient temperature range:	-20 °C to +60 °C
Type of voltage:	DC solenoid, AC voltage is rectified using a bridge rectifier built into the coil
Current draw at 20 °C:	1.5 A at 12 V DC 0.8 A at 24 V DC
Voltage tolerance:	+/-15% of nominal voltage
Coil duty rating:	Continuous up to 115% of nominal voltage at 60 °C ambient temperature
Response time:	Energized: approx. 40 ms De-energized: approx. 60 ms (typical 24 V DC-coil)
Fluids:	Hydraulic oil to DIN 51524 Part 1 and 2
Viscosity:	10 mm ² /s to 420 mm ² /s is recommended
Filtration:	Max. permissible contamination level to ISO 4406 Class 21/19/16 or cleaner
Installation:	Optional
Materials:	Valve body: high tensile steel Piston: hardened and ground steel Seals: NBR (standard) FKM (optional) back-up ring in PTFE
Cavity:	06020
Weights:	Valve complete: 0.33 kg Coil only: 0.19 kg

DIMENSIONS



MODEL CODE

WSM 06020 V - 01 M - C - N - 24 DG

Basic model _____
(Directional poppet valve, metric)

Cavity _____
06020 = 2-way cavity

Function code _____

Type _____
01 = standard

Manual override _____
omission = no option
M = manual override

Body and ports _____
C = cartridge only

Seals _____
N = NBR
V = FKM

Coil voltage _____
DC
12 = 12 V DC
24 = 24 V DC

AC (Internally full wave rectified)

24 = 24 V AC
115 = 115 V AC
230 = 230 V AC

other voltages on request

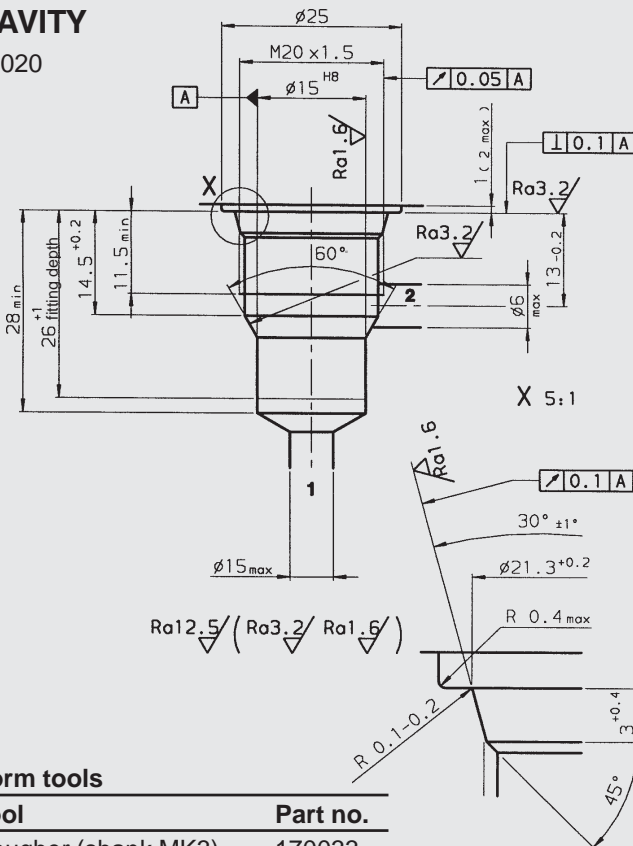
Coil connectors _____

DC: DG = DIN connector to EN 175301-803
DL = Leadwires (2) - 457 mm, 18" long
DW = Weather Pack connector on leadwires - 241mm (9.5") long
DT = AMP Junior Timer, 2-pole, radial
DK = KOSTAL threaded connection M27x1

AC: AG = DIN connector to EN 175301-803
other connection types on request

CAVITY

06020



Form tools

Tool	Part no.
Rougher (shank MK3)	170033
Finisher (shank MK2)	1000768

Standard models

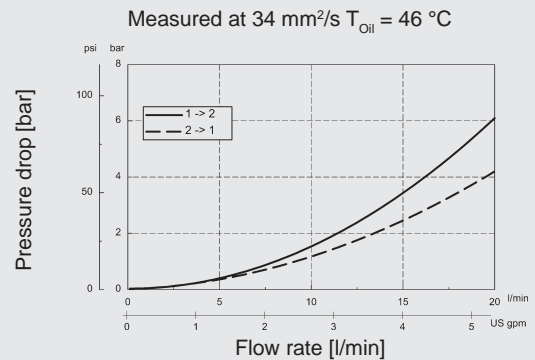
Model code	Stock no.
WSM06020V-01-C-N-24DG	3135462
WSM06020V-01-C-N-230AG	3135461

Inline connection housings

Code	Stock no.	Material	Ports
R06020-01X-01	275266	Steel, zinc-plated	G 3/8

For other connection housings, see brochure no. E 5.252. "Connection Housings for Cartridge Valves".

PERFORMANCE



NOTE

The information in this brochure relates to the operating conditions and applications described.
For applications or operating conditions not described, please contact the relevant technical department.
Subject to technical modifications.

HYDAC Fluidtechnik GmbH
Justus-von-Liebig-Str.
D-66280 Sulzbach/Saar
Tel: 0 68 97 /509-01
Telefax: 0 68 97 /509-598
E-Mail: flutec@hydac.com