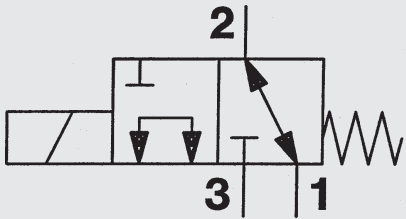


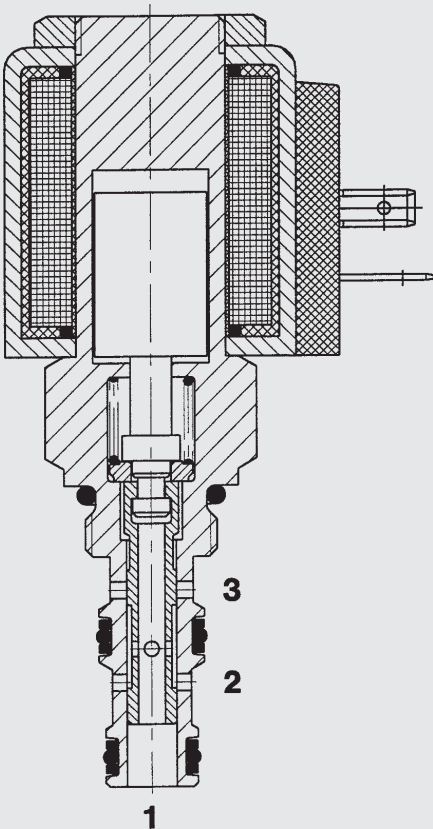
## 3/2-Solenoid Directional Valve Cartridge - 350 bar

WK07L-01  
SPOOL Type - Direct Operated



10 l/min  
350 bar

### FUNCTION



In the de-energized mode, the valve allows flow from 1 to 2 or 2 to 1, while blocking flow at 3.  
When energized, the valve allows flow from 3 to 1 or 1 to 3, while blocking flow at 2.

### FEATURES

- Wet armature solenoid
- Wide voltage tolerance
- All surfaces zinc-plated and corrosion-proof
- Waterproof design standard
- Wide variety of coils and connectors available
- One piece body design

### SPECIFICATIONS

Operating Pressure:	350 bar
Proof Pressure:	520 bar
Nominal Flow:	10 l/min
Internal Leakage:	70 cm <sup>3</sup> /min max at 210 bar and 34 cSt
Media Operating Temp. Range:	-20 °C to +120 °C
Ambient Temp. Range:	-20 °C to +60 °C
Coil Duty Rating:	Continuous from 85% to 115% of nominal voltage
Current Draw at 20 °C:	1.5 A at 12 V DC 0.8 A at 24 V DC
Minimum Pull-in Voltage:	85 % of nominal
Fluids:	Mineral-based or synthetics with lubricating properties
Viscosity:	7.4 to 420 cSt
Filtration:	Class 21/19/16 according to ISO 4406 or cleaner
Material:	Valve body: carbon steel Spool: carbon steel Sealings: NBR (standard) FKM (optional) Steel/Polyamide
Coil:	Steel/Polyamide
Cavity:	FC07-3
Weights:	Valve complete: 340 g Coil only: 190 g

