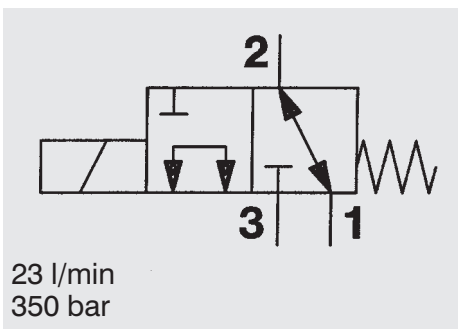
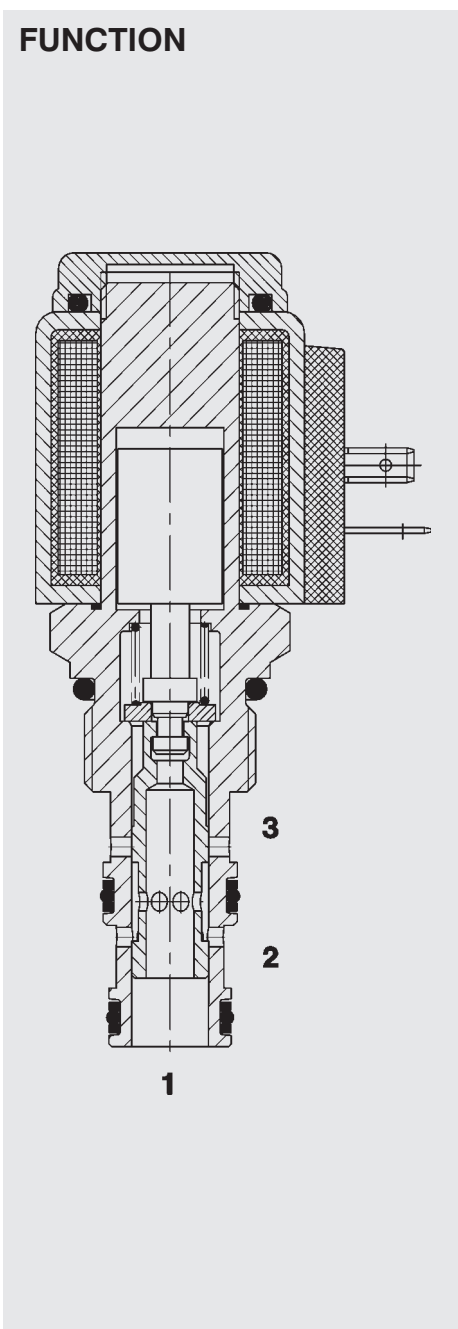


3/2-Solenoid Directional Valve SAE 10-Cartridge – 350 bar

WK10L-50
SPOOL Type - Direct Operated



FUNCTION



In the de-energized mode, the valve allows flow from 1 to 2 or 2 to 1, while blocking flow at 3.
When energized, the valve allows flow from 3 to 1 or 1 to 3, while blocking flow at 2.

FEATURES

- All surfaces zinc-plated and corrosion-proof
- All valve parts made of high-strength steel with hardened and ground components to ensure minimal wear and extended service life
- Waterproof design standard
- Wide variety of connectors available
- Rigid design using one-piece body minimizes the effect of eccentricity and maximizes reliability
- Excellent switching performance by high power HYDAC solenoid
- Low pressure drop by CFD optimized flow-path

SPECIFICATIONS

Operating pressure:	350 bar
Proof pressure:	520 bar
Nominal flow:	23 l/min
Internal leakage:	90 cm ³ /min max at 210 bar and 34 mm ² /s
Media operating temp. range:	-40 °C to +120 °C
Ambient temp. range:	-40 °C to +60 °C
Type of voltage:	DC solenoid, AC voltage is rectified using a bridge rectifier built into the coil.
Coil duty rating:	Continuous up to 115% of nominal voltage at 60 °C ambient temperature
Current draw at 20 °C:	1.5 A at 12 V DC 0.8 A at 24 V DC
Minimum pull-in voltage:	85 % of nominal
Fluids:	Mineral-based or synthetics with lubricating properties
Viscosity:	7.4 to 420 mm ² /s
Filtration:	Class 21/19/16 according to ISO 4406 or cleaner
Installation	Ptional
Material:	Valve body: high tensile steel Spool: hardened and ground steel Seals: NBR (standard) FKM (optional) back-up ring in PTFE Coil: Steel/Polyamide
Cavity:	FC10-3
Weights:	Valve complete: 0,38 g Coil only: 0,19 g

