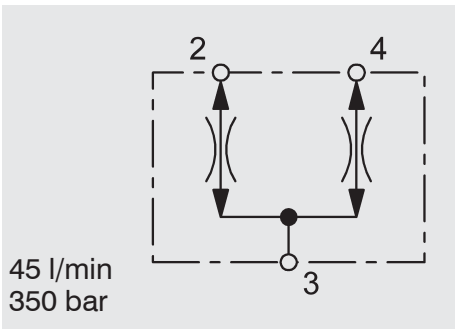
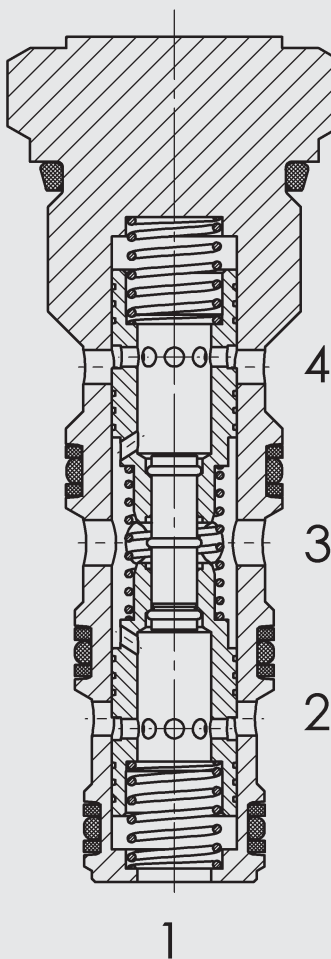


Flow Divider / Combiner SAE 10-Cartridge - 350 bar

ST10-01



FUNCTION



In dividing mode, the ST10 will divert input flow, according to the specified ratio, from port 3 to ports 2 and 4. In combining mode, input flow will be combined, according to the specified ratio, from ports 2 and 4 into port 3. Port 1 is not used.

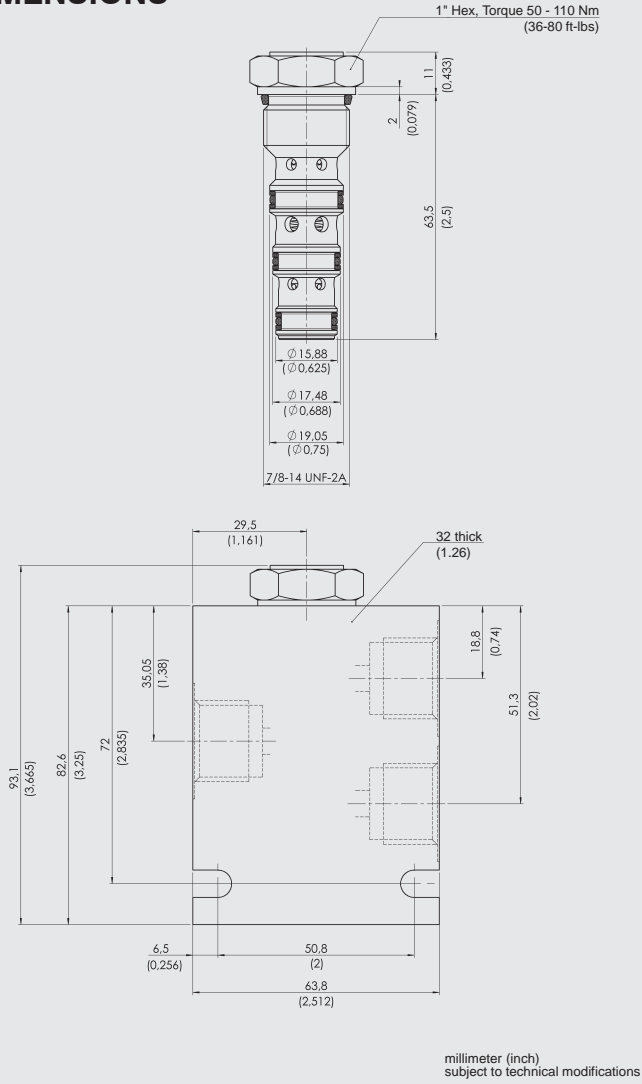
FEATURES

- All surfaces zinc-plated and corrosion proof
- All valve parts made of high-strength steel with hardened and ground components to assure minimal wear and extended service life
- High dividing & combining accuracy
- Wide flow range down to 25% of nominal flow rating
- Low pressure drop
- Can be used for differential lock in transmission applications
- Synchronizing flow in the dividing and combining mode in motor and cylinder applications
- Compact design

SPECIFICATIONS

Operating Pressure:	350 bar	
Nominal Flow:	45 l/min	
Inlet flow:	7,6 l/min	Model Code 11
	15,2 l/min	Model Code 22
	22,8 l/min	Model Code 33
	30,4 l/min	Model Code 44
	37,8 l/min	Model Code 55
	45,6 l/min	Model Code 66
Accuracy:	see performance chart	
Media Operating Temp. Range:	-20 °C to +120 °C	
Fluids:	Mineral-based or synthetics with lubricating properties	
Viscosity:	7.4 to 420 cSt	
Filtration:	Class 21/19/16 according to ISO 4406 or cleaner	
Material:	Valve body:	carbon steel
	Spool:	carbon steel
	Sealings:	NBR (standard) FKM (optional)
Cavity:	FC10-4 (Port 1 is not used)	
Weights:	122 g	

DIMENSIONS



MODEL CODE

ST10-01 - C - N - 33

Basic model

Body & Ports*

- C = Cartridge only
- SB4 = 1/2 BSP ports, steel body
- SS8 = SAE-8 ports, steel body
- AB4 = 1/2 BSP ports, aluminium body
- AS8 = SAE-8 ports, aluminium body

Seals

- N = NBR
- V = FKM

Flow rate code & flow range

Code	Ratio Port 3 [%]	Ratio Port 4 [%]	Max. inlet flow [l/min]	Balance flow rate Combining [l/min] 2-4 at 100 bar	Dividing [l/min] 2-4 at 100 bar
11	50	50	7.6	0.7	0.7
22	50	50	15.2	1.3	1.1
33	50	50	22.8	2.3	2.1
44	50	50	30.4	2.6	2.8
55	50	50	37.8	3	3.4
66	50	50	45.6	5.2	3.1

Standard models

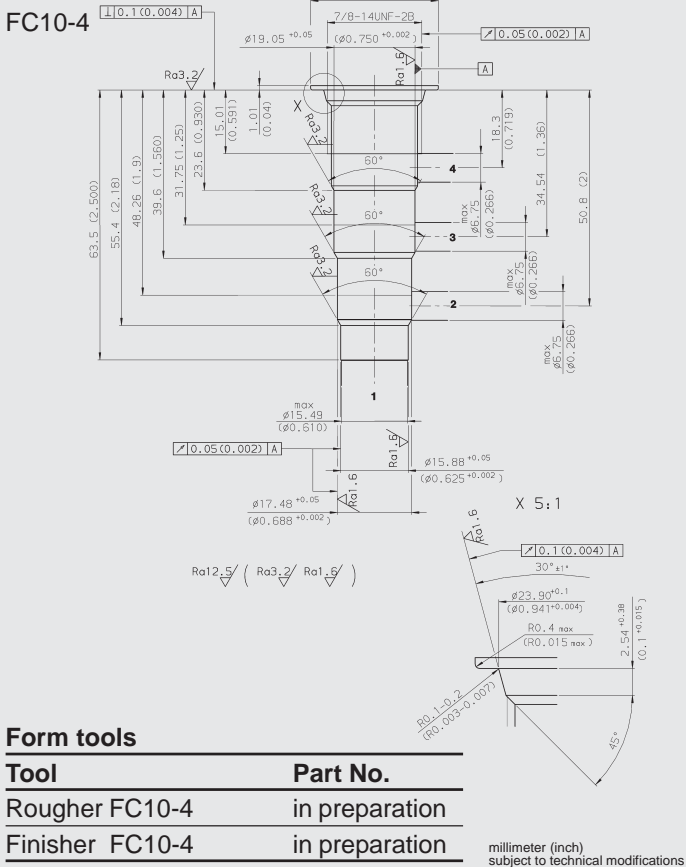
Model code	Stock no.
562884	ST10-01-C-N-11
562885	ST10-01-C-N-22
562886	ST10-01-C-N-33
562887	ST10-01-C-N-44
562888	ST10-01-C-N-55
562889	ST10-01-C-N-66

* Standard Line Bodies

Code	Stock no.	Material	Ports	Pressure
FH104-SB4	3037784	Steel, zinc-plated	1/2 BSP	420 bar
FH104-SS8	3037868	Steel, zinc-plated	SAE-8	420 bar
FH104-AB4	3038097	Aluminium, clear anodized	1/2 BSP	245 bar
FH104-AS8	3038110	Aluminium, clear anodized	SAE-8	245 bar

Port 1 at the standard line body should be plugged

CAVITY

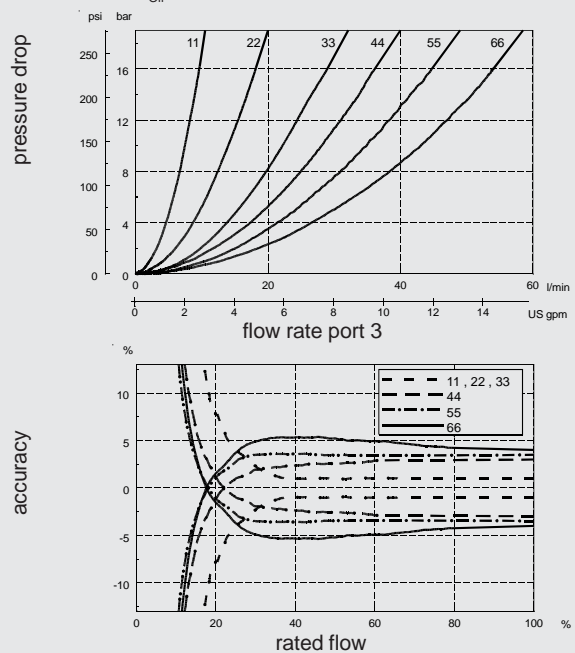


Form tools

Tool	Part No.
Rougher FC10-4	in preparation
Finisher FC10-4	in preparation

PERFORMANCE

Measured at 34 cSt
T_{Oil} = 46 °C



NOTE

The information in this brochure relates to the operating conditions and applications described. For applications or operating conditions not described, please contact the relevant technical department. Subject to technical modifications.

HYDAC Fluidtechnik GmbH

Justus-von-Liebig-Str.
D-66280 Sulzbach/Saar
Tel: 0 68 97 /509-01
Telefax: 0 68 97 /509-598
E-Mail: flutec@hydac.com