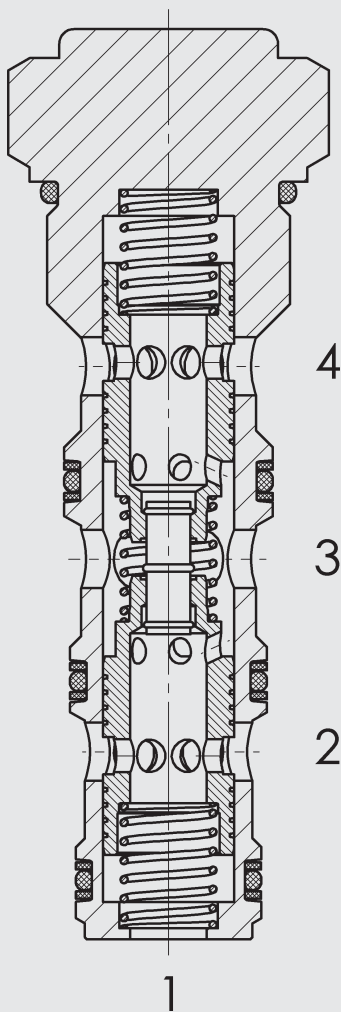


## FUNCTION



(Port 1 is not used)

In dividing mode, the ST16 will divert input flow, according to the specified ratio, from port 3 to ports 2 and 4. In combining mode, input flow will be combined, according to the specified ratio, from ports 2 and 4 into port 3. Port 1 is not used and should be blanked.

## Flow Divider / Combiner SAE 16-Cartridge – 350 bar

ST16-01

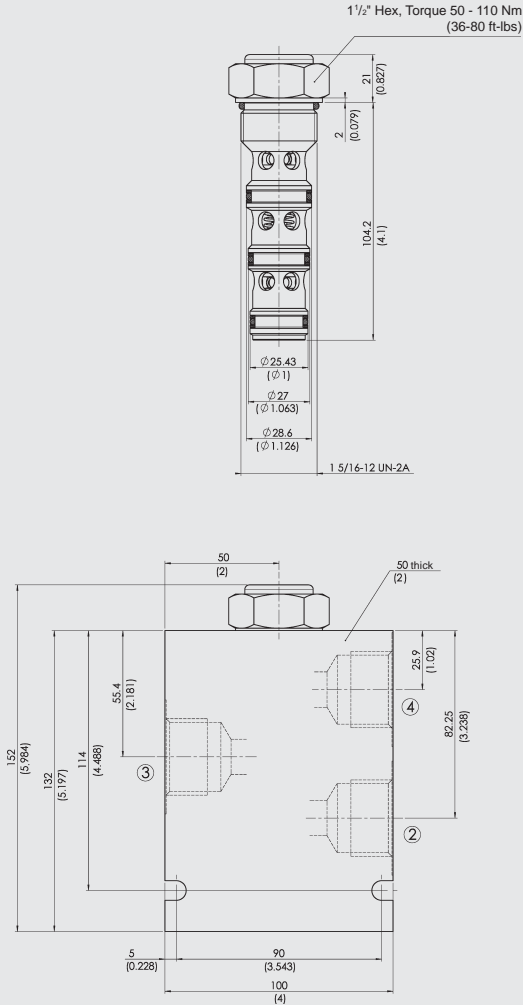
## FEATURES

- All surfaces zinc-plated and corrosion proof
- All valve parts made of high-strength steel with hardened and ground components to ensure minimal wear and to extend service life
- Rigid design using one-piece body minimizes the effect of eccentricity and maximizes reliability
- High dividing & combining accuracy
- Wide flow range down to 25% of nominal flow rating
- Low pressure drop
- Can be used for differential lock in transmission applications
- Synchronizing flow in the dividing and combining mode in motor and cylinder applications
- Compact design

## SPECIFICATIONS

Operating pressure:	350 bar	
Nominal flow:	150 l/min	
Inlet flow:	90 l/min	Model Code 1212
	115 l/min	Model Code 1515
	150 l/min	Model Code 2020
Accuracy:	see performance chart	
Media operating temp. range:	-20 °C to +120 °C	
Fluids:	Mineral-based or synthetics with lubricating properties	
Viscosity:	7.4 to 420 cSt	
Filtration:	Class 21/19/16 according to ISO 4406 or cleaner	
Material:	Valve body:	carbon steel
	Spool:	carbon steel
	Sealings:	NBR (standard) FKM (optional)
Cavity:	FC16-4	(Port 1 is not used, blocked by blind cavity)
Weights:	446 g	

## DIMENSIONS



millimeter (inch)  
subject to technical modifications

## MODEL CODE

**ST16-01 - C - N - 1212**

Basic model \_\_\_\_\_

Body & Ports\* \_\_\_\_\_

- C = Cartridge only
- SB8 = 1 BSP ports, steel body
- SS16 = SAE-16 ports, steel body
- AB8 = 1 BSP ports, aluminium body
- AS16 = SAE-16 ports, aluminium body

Seals \_\_\_\_\_

- N = NBR
- V = FKM

Flow rate code & flow range \_\_\_\_\_

Code	Ratio Port 3 [%]	Ratio Port 4 [%]	Max. inlet flow [l/min]	Balance flow rate [l/min]
1212	50	50	90	6.7
1515	50	50	115	8.3
2020	50	50	150	9.8

## Standard models

Model code	Stock no.(= order no.)
ST16-01-C-N-1212	3012922
ST16-01-C-N-1515	3115421
ST16-01-C-N-2020	3012973

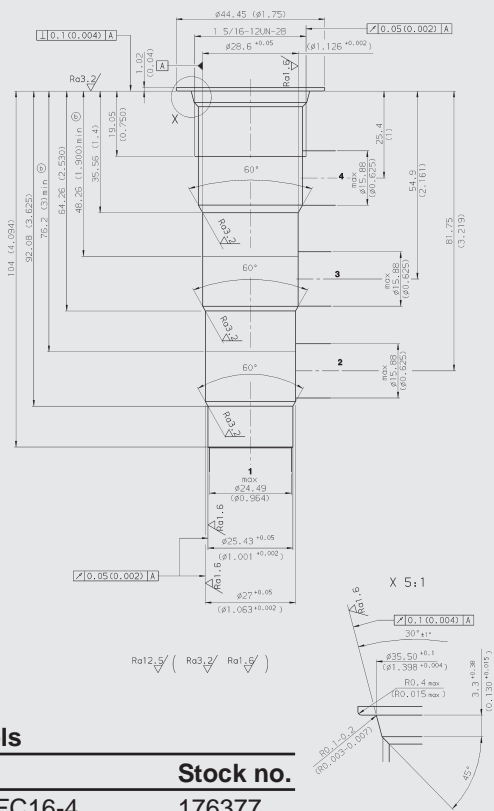
## \* Standard Line Bodies

Code	Stock no.	Material	Ports	Pressure
FH164-SB8	3032902	Steel, zinc-plated	1 BSP	420 bar
FH164-SS16	3035672	Steel, zinc-plated	SAE-16	420 bar
FH164-AB8	3037213	Aluminium, clear anodized	1 BSP	245 bar
FH164-AS16	3037214	Aluminium, clear anodized	SAE-16	245 bar

Port 1 at the line body is not used and should be closed by threaded plug

## CAVITY

FC16-4



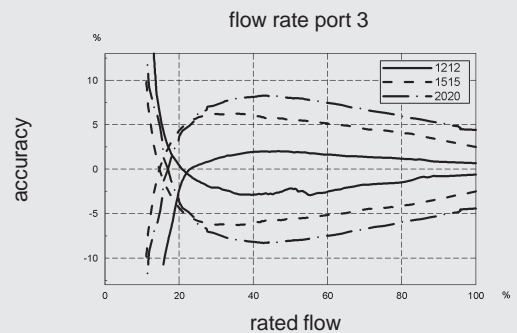
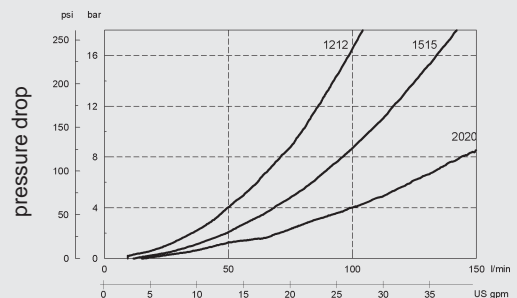
millimeter (inch)  
subject to technical modifications

## Form tools

Tool	Stock no.
Rougher FC16-4	176377
Finisher FC16-4	176378

## PERFORMANCE

Measured at 34 cSt; T<sub>Oil</sub> = 46 °C



## NOTE

The information in this brochure relates to the operating conditions and applications described. For applications or operating conditions not described, please contact the relevant technical department. Subject to technical modifications.

**HYDAC Fluidtechnik GmbH**

Justus-von-Liebig-Str.  
D-66280 Sulzbach/Saar  
Tel: 0 68 97 /509-01  
Telefax: 0 68 97 /509-598  
E-Mail: flutec@hydac.com