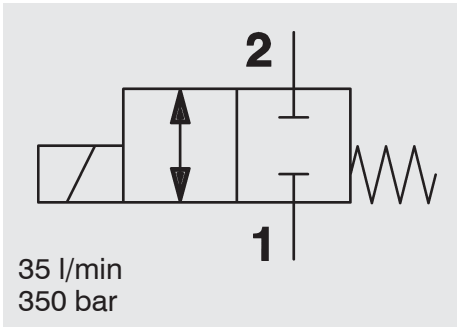


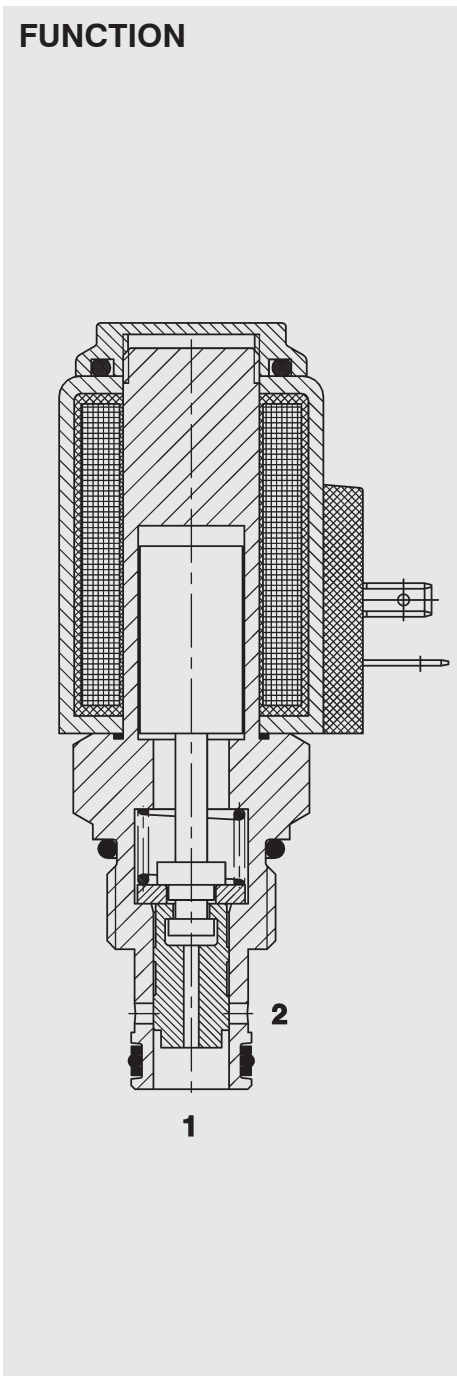
2/2-Solenoid Directional Valve UNF SAE 10-Cartridge - 350 bar

WK10W-01

SPOOL Type - Direct Operated



FUNCTION



This is a bidirectional spool valve in the de-energized mode.

When energized, the valve allows flow in both directions.

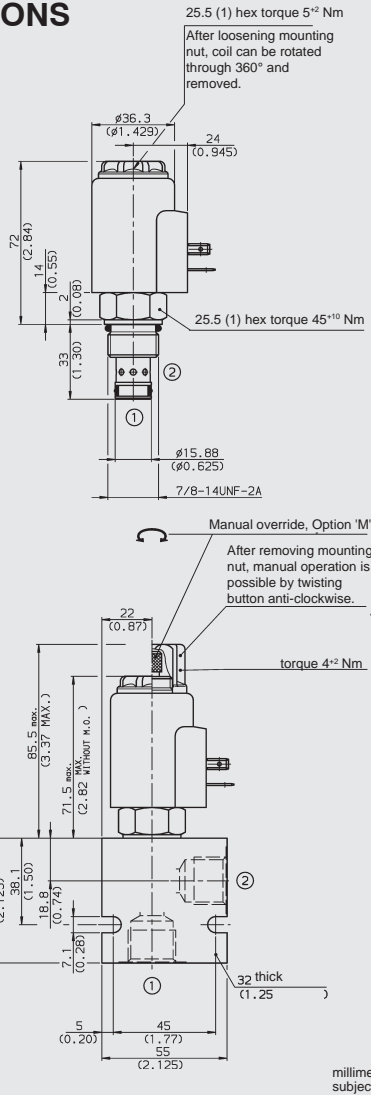
FEATURES

- All surfaces zinc-plated and corrosion-proof
- All valve parts made of high-strength steel with hardened and ground components to ensure minimal wear and extended service life
- Coil seals protect the solenoid system
- Wide variety of connectors available
- Rigid design using one-piece body minimizes the effect of eccentricities in cavity and maximizes reliability
- Excellent switching performance by high power HYDAC solenoid
- Low pressure drop due to CFD optimized flow-path

SPECIFICATIONS

Operating pressure:	Max. 350 bar	
Proof pressure	520 bar	
Nominal flow:	Max. 35 l/min	
Internal leakage:	150 cm ³ /min max. at 250 bar and 34 mm ² /s	
Media operating temp. range:	- 20 °C to + 120 °C	
Ambient temp. range:	- 20 °C to + 60 °C	
Fluids:	Hydraulic oil to DIN 51524 part 1 and 2	
Viscosity:	min. 7.4 mm ² /s up to max. 420 mm ² /s	
Filtration:	Class 21/19/16 according to ISO 4406 or cleaner	
Installation:	optional	
Material:	Valve body:	high tensile steel
	Piston:	hardened and ground steel
	Seals:	NBR (Standard) FKM (Option)
	Coil:	Steel/Polyamide
	Support ring:	PTFE
Cavity:	FC10-2	
Weights:	Valve complete:	0.45 kg
	Coil only:	0.23 kg
Response time:	Energized:	35 ms
	De-energized:	50 ms
	typical 24 V DC-coil	
Type of voltage:	DC solenoid, AC voltage is rectified using a bridge rectifier built into the coil	
Current draw at 20 °C:	2.22 A at 12 V DC 1.13 A at 24 V DC	
Voltage tolerance:	±15 % of nominal voltage	
Coil duty rating:	Continuous up to 115 % of nominal voltage at 60 °C ambient temperature	

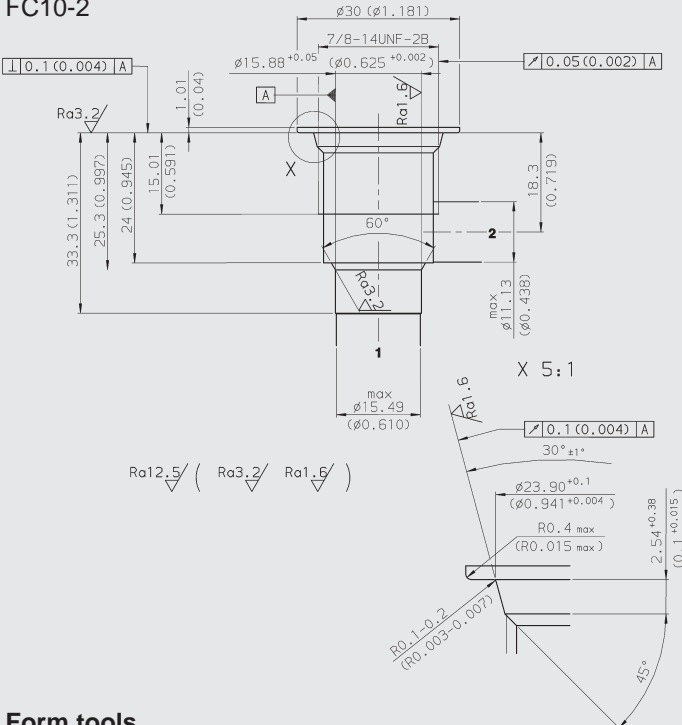
DIMENSIONS



millimeter (inch)
subject to technical modifications

CAVITY

FC10-2



millimeter (inch)
subject to technical modifications

Form tools

Tool	Part No
Rougher FC10-2	176379
Finisher FC10-2	165706

MODEL CODE

WK10W-01 M - C - N - 24 DG

Designation
Directional spool valve UNF
Cavity 10-2 = 2 way cavity
Function code
Type 01 = standard

Option
Omission = No option
M = Manual override

Body and Ports*
C = Cartridge Only
SB4 = 1/2 BSP ports, steel body
AB4 = 1/2 BSP ports, aluminium body

Seals
N = NBR
V = FKM

Coil Voltage
DC

12 = 12 V DC
24 = 24 V DC

AC (internally full wave rectified)

115 = 115 V AC
230 = 230 V AC

other voltages on request

Coil Connector

DC: DG = DIN Connector to EN 175301-803
DK = Kostal threaded connection M27x1
DL = Leadwires (2) - 457mm, (18") long
DN = Deutsch connector 2-pole
DT = AMP Junior Timer, 2-pole, radial
AC: AG = DIN Connector to EN 175301-803
other connection types on request

Standard models

Model code	Part no.
WK10W-01-C-N-24DG	3079726
WK10W-01-C-N-230AG	3094629

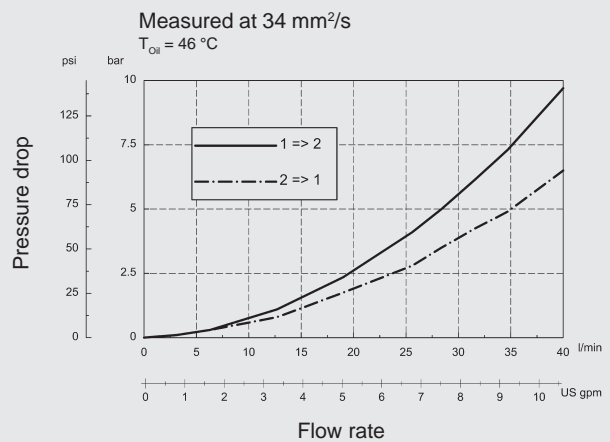
other models on request

* Inline connection housings

Code	Part no.	Material	Ports	Pressure
FH102-SB4	3037594	Steel, zinc-plated	1/2 BSP	420 bar
FH102-AB4	3037777	Aluminium, clear anodized	1/2 BSP	245 bar

other housings on request

PERFORMANCE



NOTE

The information in this brochure relates to the operating conditions and applications described. For applications or operating conditions not described, please contact the relevant technical department. Subject to technical modifications.

HYDAC Fluidtechnik GmbH
Justus-von-Liebig-Str.
D-66280 Sulzbach/Saar
Tel: 0 68 97 /509-01
Fax: 0 68 97 /509-598
E-Mail: flutec@hydac.com