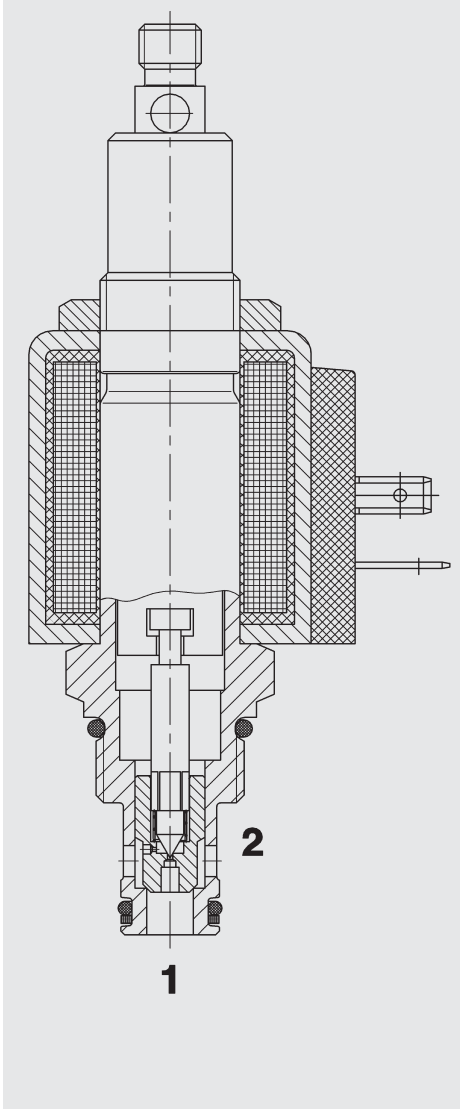


FUNCTION



In the de-energized mode, the valve blocks flow from 2 to 1 and acts as a check allowing flow from 1 to 2.

When energized, the valve allows flow from 2 to 1.

Flow from 1 to 2 is severely restricted in this mode.

Solenoid Directional Valve SAE 08-Cartridge - 350 bar

2/2-Normally Closed
WS08Z-01J

Poppet Type - Pilot Operated
Spring-Return Manual Override

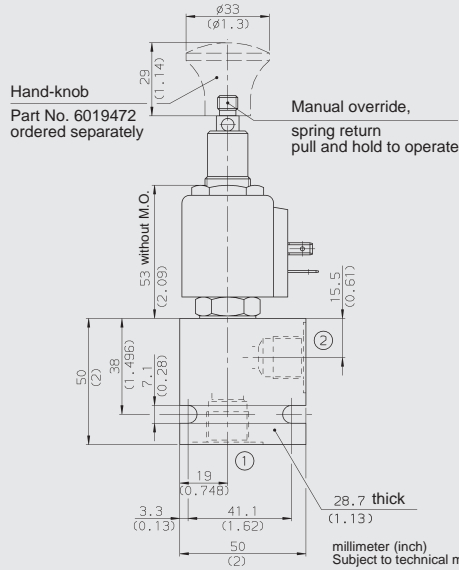
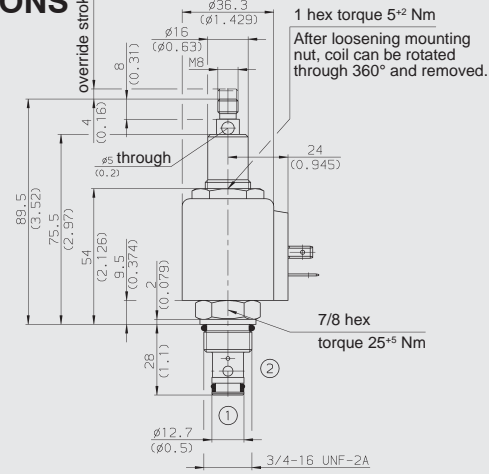
FEATURES

- Wet armature solenoid
- Wide voltage tolerance
- All valve parts made of high-strength steel with hardened and ground components to ensure minimal wear and to extend service life
- All surfaces zinc-plated and corrosion-proof
- Waterproof design standard
- Wide variety of coils and connectors available
- One piece body design

SPECIFICATIONS

| | |
|------------------------------|---|
| Operating pressure: | 350 bar |
| Proof pressure: | 520 bar |
| Flow: | 38 l/min |
| Internal leakage: | leakfree (less than 5 drops/min) max. at 350 bar |
| Media operating temp. range: | - 20 °C to + 120 °C |
| Ambient temp. range: | - 20 °C to + 60 °C |
| Coil duty rating: | Continuous from 85 % to 115 % of nominal voltage |
| Current draw at 20 °C: | 1.5 A at 12 V DC 0.8 A at 24 V DC |
| Minimum pull-in voltage: | 85 % of nominal |
| Manual override: | The pull force required is dependent on the operating pressure max. approx. 150 N The max. permissible pull force is 180 N |
| Response time: | Energized: 35 ms De-energized: 50 ms typical 24 V DC-coil |
| Fluids: | Mineral-based or synthetics with lubricating properties |
| Viscosity: | 7.4 to 420 cSt |
| Filtration: | Class 21/19/16 according to ISO 4406 or cleaner |
| Installation: | No orientation restrictions |
| Material: | Valve body: carbon steel Piston: carbon steel Seals: NBR (Standard) FKM (Option) Coil: Steel/Polyamide |
| Cavity | FC08-2 |
| Weights: | Valve complete: 360 g Coil only: 190 g |

DIMENSIONS



MODEL CODE

WS08Z-01 J - C - N - 24 DG

Basic Model

Manual Override

J = Pull Type,
Spring-Return Manual Override

Body and Ports*

C = Cartridge Only
SB3 = 3/8 BSP ports, steel body
SS6 = SAE-6 ports, steel body
AB3 = 3/8 BSP ports, aluminium body
AS6 = SAE-6 ports, aluminium body

Seals

N = NBR
V = FKM

Coil Voltage

DC

10 = 10 V DC
12 = 12 V DC
24 = 24 V DC
36 = 36 V DC
48 = 48 V DC

110 = 110 V DC available with DG termination only
AC (internally full wave rectified)

24 = 24 V AC
115 = 115 V AC
230 = 230 V AC

Coil Connector

DC: DG = DIN Connector (DIN 43650)

DS = Dual Spade SAEJ858a

DL = Leadwires (2) - 457mm (18") long

DW = Weather Pack Connector on leadwires - 241 mm (9.5") long

DK = Kostal connector

DT = 2-pole AMP Junior Timer plug

AC: AG = DIN Connector (DIN 43650)

Standard models

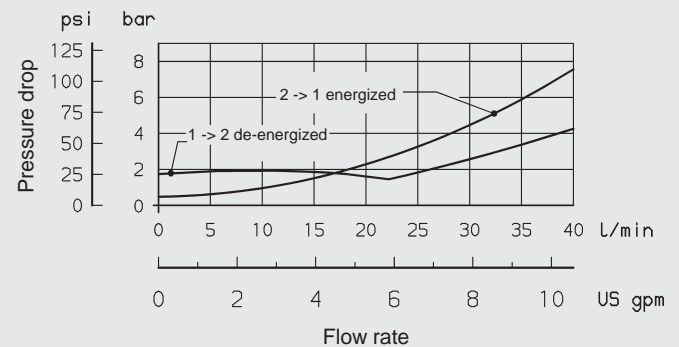
| Model code | Stock no. |
|---------------------|-----------|
| WS08Z-01J-C-N-24DG | 3122463 |
| WS08Z-01J-C-N-230AG | 3122464 |

* Standard Line Bodies

| Code | Part No | Material | Ports | Pressure |
|-----------|---------|---------------------------|---------|----------|
| FH082-SB3 | 560919 | Steel, zinc-plated | 3/8 BSP | 420 bar |
| FH082-SS6 | 560917 | Steel, zinc-plated | SAE-6 | 420 bar |
| FH082-AB3 | 3011423 | Aluminium, clear anodized | 3/8 BSP | 245 bar |
| FH082-AS6 | 3011409 | Aluminium, clear anodized | SAE-6 | 245 bar |

PERFORMANCE (Cartridge Only)

Measured at 34 cSt
T_{Oil} = 46 °C



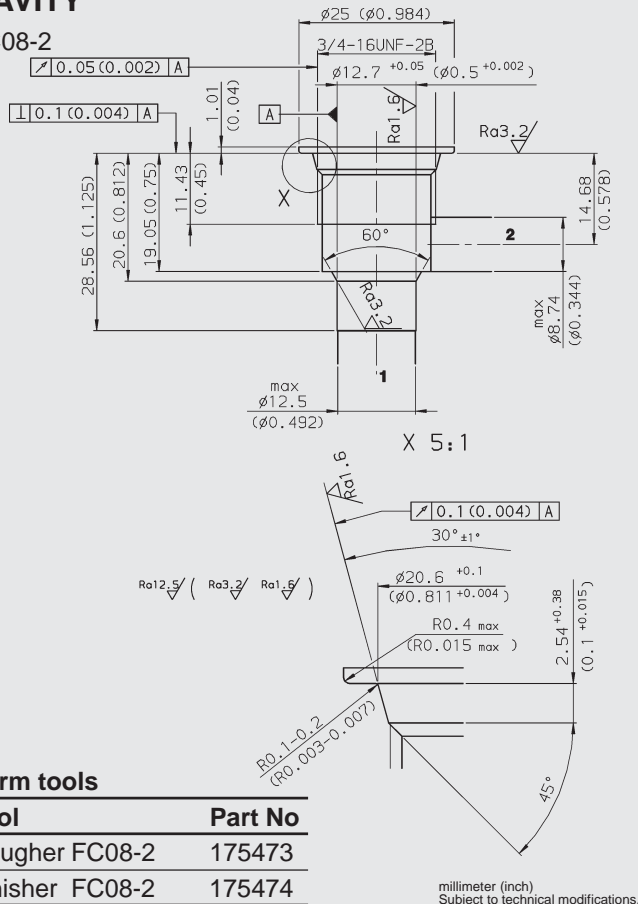
NOTE

The information in this brochure relates to the operating conditions and applications described. For applications or operating conditions not described, please contact the relevant technical department. Subject to technical modifications.

HYDAC Fluidtechnik GmbH
Justus-von-Liebig-Str.
D-66280 Sulzbach/Saar
Tel: 0 68 97 /509-01
Telefax: 0 68 97 /509-598
E-Mail: flutec@hydac.com

CAVITY

FC08-2



Form tools

| Tool | Part No |
|-----------------|---------|
| Rougher FC08-2 | 175473 |
| Finisher FC08-2 | 175474 |