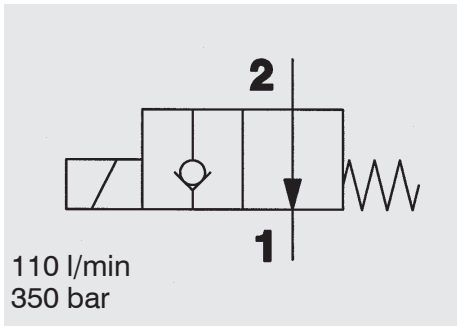


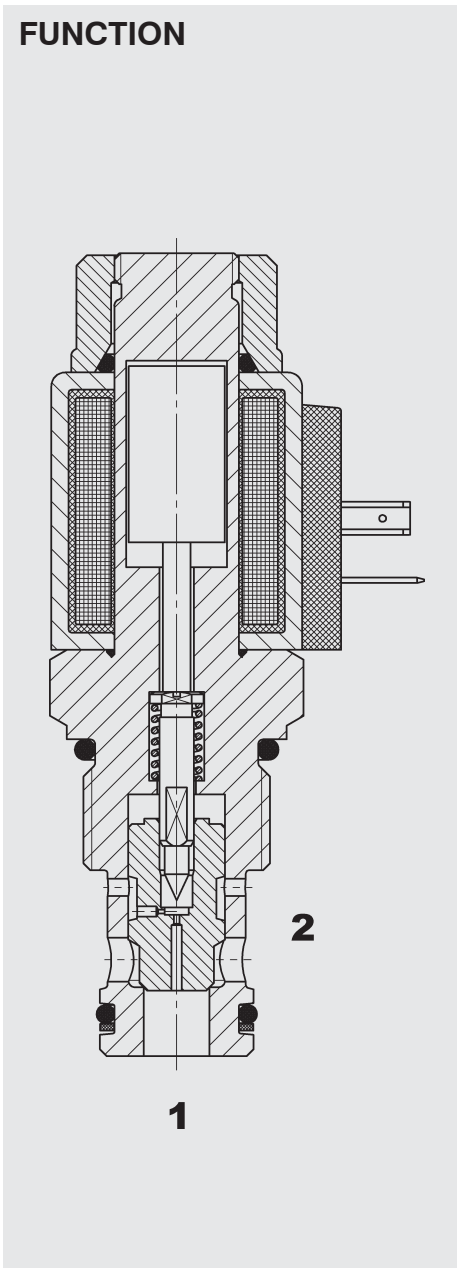
Solenoid Directional Valve SAE 12-Cartridge - 350 bar 2/2 Normally Open

WS12Y-01

Poppet Type - Pilot Operated



FUNCTION



In the de-energized mode, the valve allows flow from 2 to 1. Flow from 1 to 2 is severely restricted in this mode.

When energized, the valve blocks flow from 2 to 1. In this mode the valve will allow flow from 1 to 2 after the hydraulic force overcomes the solenoid force (1.5 to 6.5 bar).

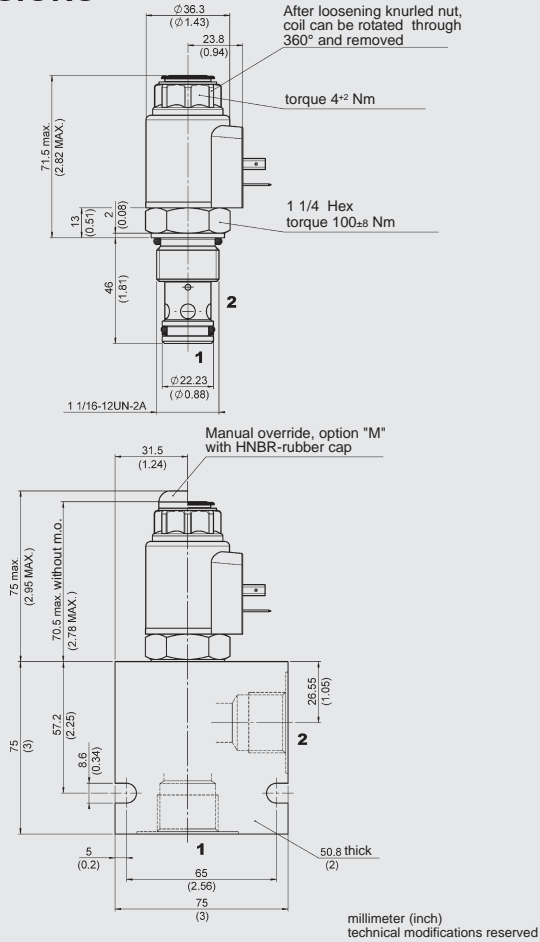
FEATURES

- Excellent switching performance by high power HYDAC solenoid
- All valve parts made of high-strength steel with hardened and ground components to ensure minimal wear and to extend service life
- Rigid design by using one-piece body minimizes the effect of eccentricity and maximizes reliability
- All surfaces zinc-plated and corrosion-proof
- Waterproof design standard
- Wide variety of connectors available
- Low pressure drop by CFD optimized flow-path

SPECIFICATIONS

Operating pressure:	350 bar
Nominal flow:	110 l/min
Internal leakage:	leak-free (less than 5 drops/min) at 350 bar
Media operating temperature range:	-20 °C to +120 °C
Ambient temperature range:	-20 °C to +60 °C
Coil duty rating:	continuous from 85% to 115% of nominal voltage
Current draw at 20 °C:	1.5 amps at 12 V DC 0.8 amps at 24 V DC
Minimum pull-in voltage:	85 % of nominal
Response time:	Energized: 90 ms De-energized: 25 ms typical 24 V DC-coil
Fluids:	Mineral-based or synthetics with lubricating properties
Viscosity:	7.4 to 420 cSt
Filtration:	Class 21/19/16 according to ISO 4406 or cleaner
Installation:	No orientation restrictions
Material:	Valve body: carbon steel Piston: carbon steel Seals: NBR (standard) FKM (optional)
	Coil: steel/polyamide
Cavity:	FC12-2
Weight:	Valve complete: 490 g Coil only: 190 g

DIMENSIONS



MODEL CODE

WS12Y-01 M - C - N - 24 DG

Basic Model _____

Option _____

Omission = No Option
M = Manual Override

Body and Ports* _____

C = Cartridge only
SB6 = 3/4 BSP ports, steel body
SS12 = SAE-12 ports, steel body
AB6 = 3/4 BSP ports, aluminium body
AS12 = SAE-12 ports, aluminium body

Seals _____

N = NBR
V = FKM

Coil Voltage _____

DC

10 = 10 V DC
12 = 12 V DC
24 = 24 V DC
36 = 36 V DC
48 = 48 V DC
110 = 100 V DC available with DG termination only

AC (internally full wave rectified)

24 = 24 V DC
115 = 115 V DC
230 = 230 V DC

Coil connector _____

DC: DG = DIN Connector (DIN 43650)

DS = Dual Spade SAEJ858a

DL = Leadwires (2) - 457mm (18") long

DW = Weather Pack Connector on leadwires - 241 mm (9.5") long

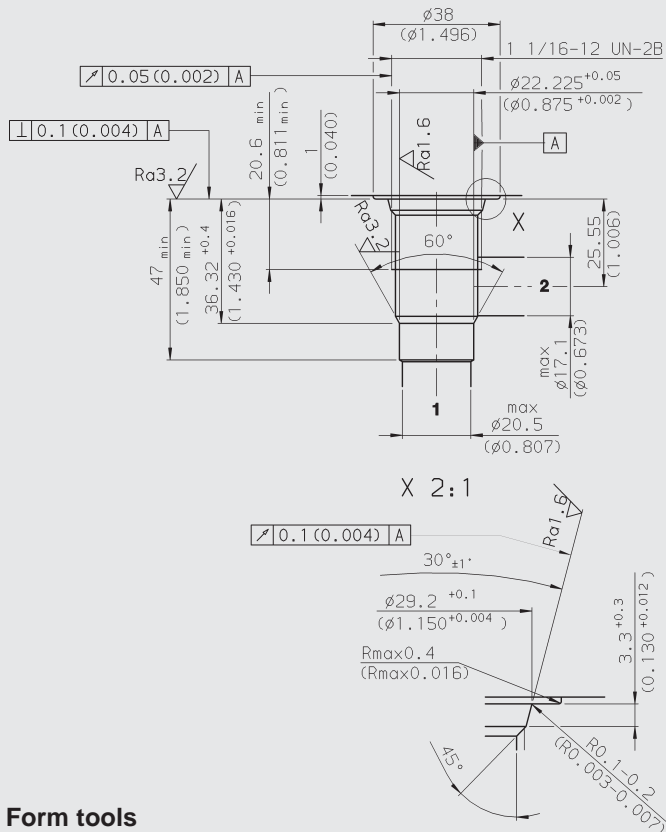
DK = Kostal connector

DT = 2-pole AMP Junior Timer plug

AC: AG = DIN Connector (DIN 43650)

CAVITY

FC12-2



Form tools

Tool	Part No
Rougher FC12-2	in preparation
Finisher FC12-2	in preparation

millimeter (inch)
technical modifications reserved

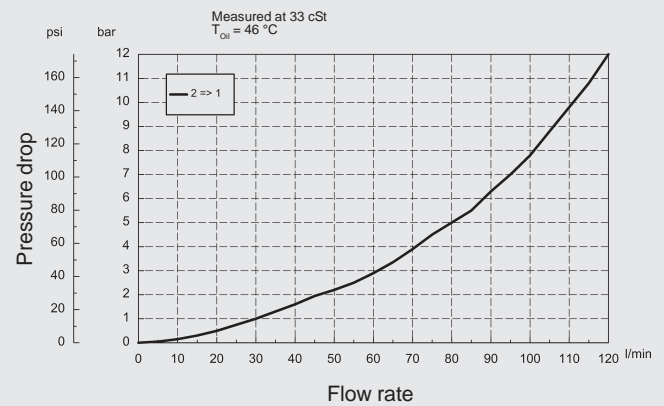
Standard models

Model code	Stock no.
WS12Y-01-C-N-24DG	3157829
WS12Y-01-C-N-230AG	3157828

* Standard Line Bodies

Code	Part No	Material	Ports	Pressure
FH122-SB6	3053782	Steel, zinc-plated	3/4 BSP	420 bar
FH122-SS12	3053772	Steel, zinc-plated	SAE-12	420 bar
FH122-AB6	3053843	Aluminium, clear anodized	3/4 BSP	245 bar
FH122-AS12	3053845	Aluminium, clear anodized	SAE-12	245 bar

PERFORMANCE



NOTE

The information in this brochure relates to the operating conditions and applications described. For applications or operating conditions not described, please contact the relevant technical department. Subject to technical modifications.

HYDACFluidtechnik GmbH
Justus-von-Liebig-Str.
D-66280 Sulzbach/Saar
Tel: 0 68 97 /509-01
Telefax: 0 68 97 /509-598
E-Mail: flutec@hydac.com