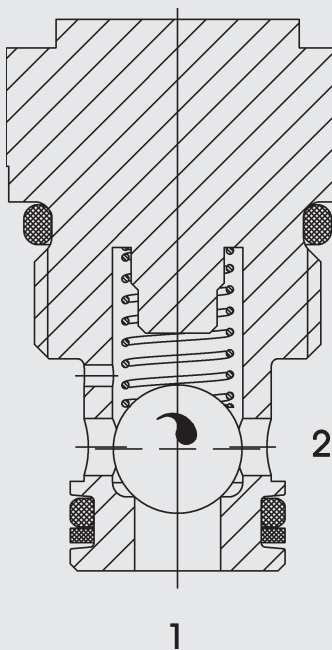




up to 38 l/min
up to 350 bar

FUNCTION



The RVM 06020 check valve is a direct-operated, spring-loaded ball seat valve. When there is no flow through the valve, the spring keeps the ball in the closed position and therefore shuts off port 2 from port 1.

The valve opens when the pressure at port 1 is higher than the pressure at port 2 together with the pressure created by the spring force.

Check Valve Ball Type Cartridge Valve – 350 bar

RVM06020-01

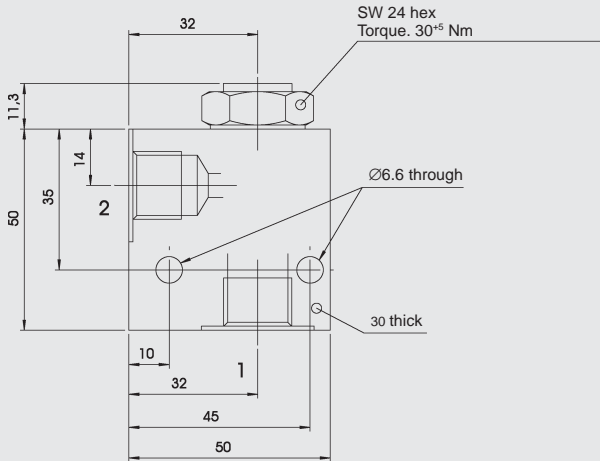
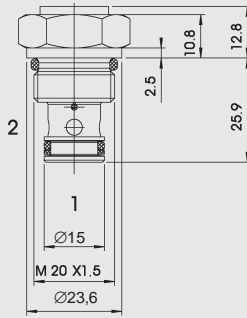
GENERAL

- Main application is to prevent uncontrolled movement or creeping in loaded cylinders and to shut off parts of the system.
- Excellent stability over the whole flow rate range
- All surfaces zinc-plated for corrosion protection
- Minimal wear and long service life due to hardened and ground valve components.
- Rigid design using one-piece body minimises the effect of eccentricity and maximises reliability.
- Low pressure drop due to CFD optimised flow path.

SPECIFICATIONS

Operating pressure:	max. 350 bar
Flow rate:	max. 38 l/min
Internal leakage:	0.1 cm ³ /min at 350 bar
Cracking pressure:	0.5 bar (others on request)
Ambient temperature range:	-20 °C to +120 °C
Temperature range of operating fluid:	-20°C to +80°C
Operating fluid:	Hydraulic oil to DIN 51524 Part 1 and 2
Viscosity range:	min. 2.8 mm ² /s to 800 mm ² /s
Filtration:	Max. permissible contamination level of the operating fluid to ISO 4406 class 21/19/16 or cleaner
Mounting position:	Optional
Materials:	valve body: high-tensile steel ball: hardened and ground steel seals: NBR (standard) FKM (optional) back-up rings: PTFE
Cavity:	06020
Weight:	0.08 kg

DIMENSIONS



Subject to technical modifications

MODEL CODE

RVM 06020 - 01 - C - N - 0.5

Designation
Check valve, metric

Cavity
06020 = 2-way cavity

Type
01 = standard model

Type of connection
C = cartridge valve

Seals
N = NBR
V = FKM

Cracking pressure
0.5 = 0.5 bar
Others on request

Standard models

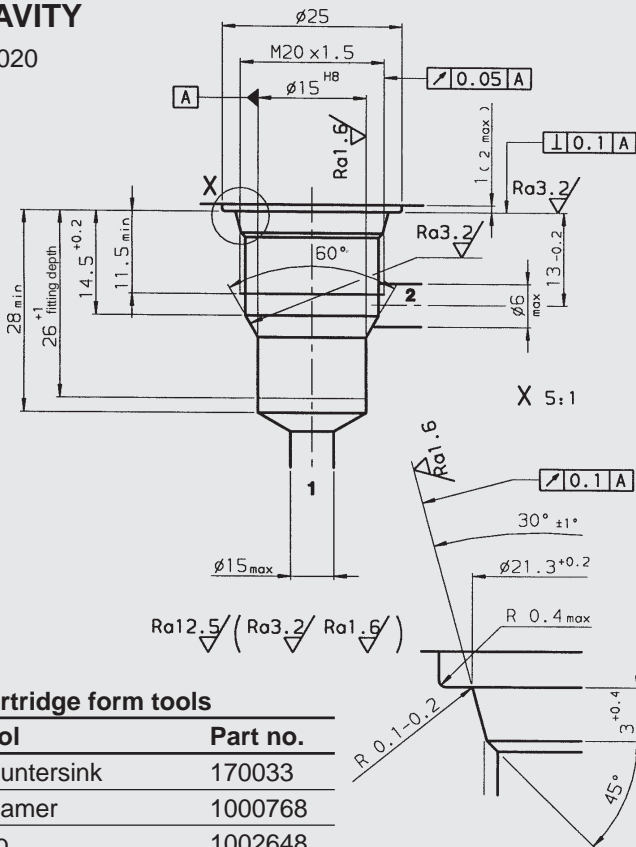
Model code	Part no.
RVM06020-01-C-N-0.5	3196992

Inline connection housings

Code	Part no.	Material	Ports
R06020-01X-01	276266	Steel, zinc-plated	G 3/8

CAVITY

06020



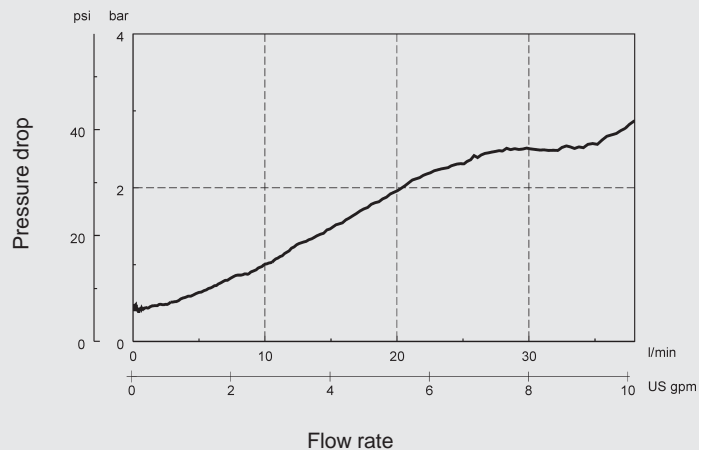
Subject to technical modifications

Cartridge form tools

Tool	Part no.
Countersink	170033
Reamer	1000768
Tap	1002648
Plug gauge	168840

PERFORMANCE

Measured at:
 $T_{oil} = 46\text{ °C}$, 33 mm²/s



NOTE

The information in this brochure relates to the operating conditions and applications described. For applications or operating conditions not described, please contact the relevant technical department. Subject to technical modifications.

HYDAC Fluidtechnik GmbH
Justus-von-Liebig-Str.
D-66280 Sulzbach/Saar
Tel: 0 68 97 /509-01
Fax: 0 68 97 /509-598
E-Mail: flutec@hydac.com