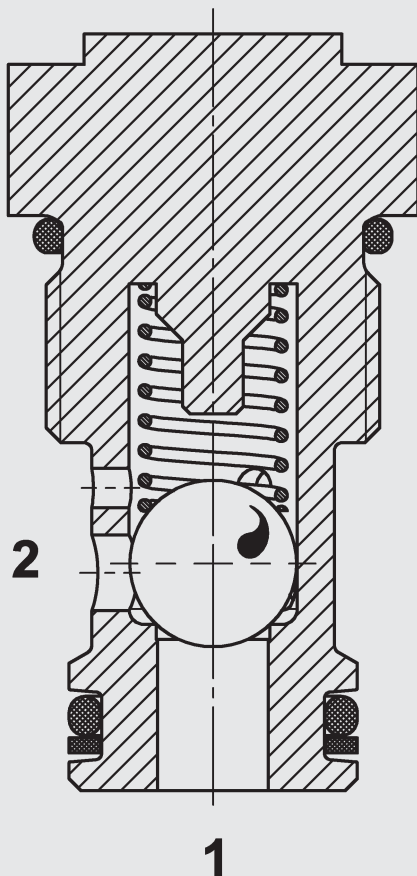




up to 100 l/min
up to 350 bar

FUNCTION



When there is no flow through the valve, the spring keeps the ball in the closed position.

The valve opens when the pressure across port 1 is higher than the pressure across port 2, including the cracking pressure created by the spring force.

In the check direction the ball is pressed against the seat and shuts off port 2 from port 1.

Check Valve Ball Type Cartridge Valve – 350 bar

RVM10120-01

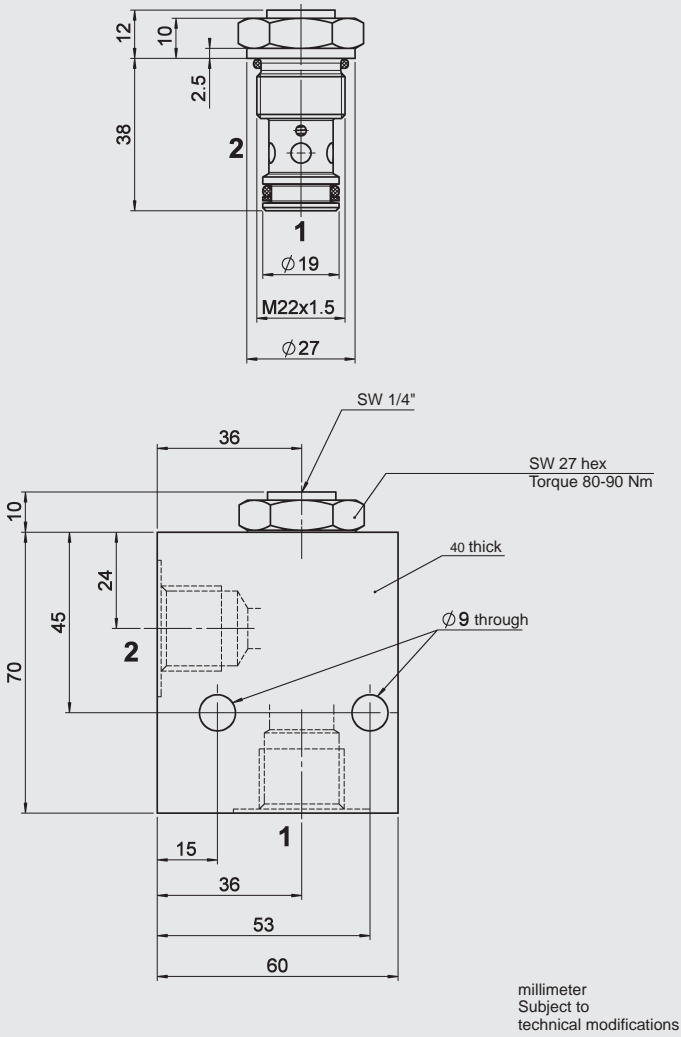
FEATURES

- All surfaces zinc-plated
- Standardised cavity ensuring great versatility.
- Minimal wear and long service life due to hardened and ground valve components.
- Rigid design using one-piece body minimises the effect of eccentricity and maximises reliability.
- Excellent stability over the whole flow range
- Compact construction allows space-saving installation in connection housings and control blocks.
- Simple fitting due to service-friendly cartridge valve technology.

SPECIFICATIONS

Operating pressure:	max. 350 bar
Nominal flow:	max. 100 l/min
Internal leakage:	0.1 cm ³ /min at 350 bar
Cracking pressure:	0.5 bar (others on request)
Media operating temp. range:	-20 °C to +80 °C
Ambient temperature range:	-20 °C to +80 °C
Fluids:	Hydraulic oil to DIN 51524 Part 1 and 2
Viscosity:	2.8 mm ² /s to 800 mm ² /s is recommended
Filtration:	Max. permissible contamination level of the operating fluid to ISO 4406 class 21/19/16
Installation:	Optional
Materials:	valve body: free-cutting steel closing elements: roller bearing steel seals: NBR (standard) FKM (optional) back-up ring in PTFE
Cavity:	10120
Weight:	0.110 kg

DIMENSIONS



MODEL CODE

RVM 10120 - 01 - C - N - 0.5

Basic model _____
Check valve, metric

Cavity _____
10120 = 2-way cavity

Type _____
01 = standard model

Body and ports _____
C = cartridge only

Seals _____
N = NBR
V = FKM

Cracking pressure _____
0.5 = 0.5 bar
Others on request

Standard models

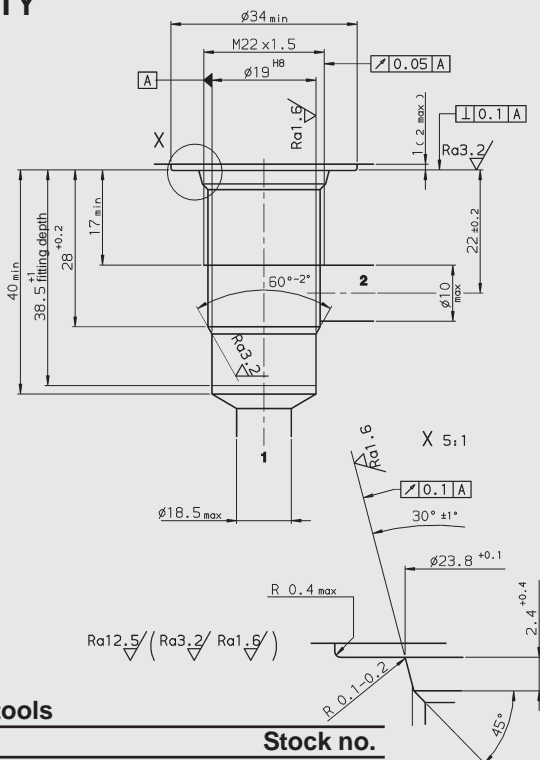
Model code	Stock no.
RVM10120-01-C-N-0.5	3058962

Inline connection housings

Code	Stock no.	Material	Ports
R10120-01X-01	395234	Steel, zinc-plated	G1/2 G1/2
R10120-01X-02	395235	Steel, zinc-plated	M22x1.5 M22x1.5

CAVITY

10120



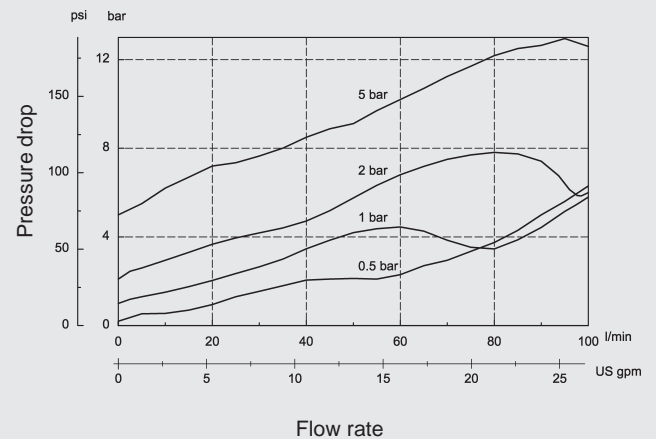
Form tools

Tool	Stock no.
Countersink	170418
Reamer	1014206
Tap	1002627
Plug gauge	169394

millimeter
Subject to
technical modifications

PERFORMANCE

Measured at:
 $T_{\text{oil}} = 46^\circ\text{C}$, 33 mm²/s



NOTE

The information in this brochure relates to the operating conditions and applications described. For applications or operating conditions not described, please contact the relevant technical department. Subject to technical modifications.

HYDAC Fluidtechnik GmbH
Justus-von-Liebig-Str.
D-66280 Sulzbach/Saar
Tel: 0 68 97 /509-01
Telefax: 0 68 97 /509-598
E-Mail: flutec@hydac.com