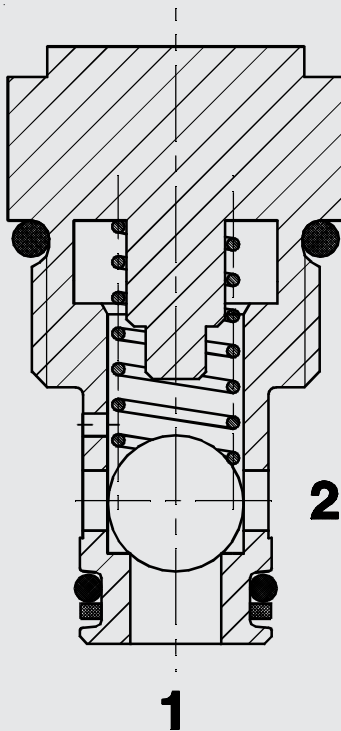




38 l/min
420 bar

FUNCTION



The RV08A allows flow from 1 to 2, while normally blocking oil flow in the opposite direction. The guided check is spring-biased closed until sufficient pressure is applied at 1 to open to 2.

Check Valve SAE 8-Cartridge - 420 bar

RV08A-01

Ball Type

FEATURES

- All surfaces zinc-plated and corrosion-proof
- Hardened closing element
- Quick response
- Low leakage design
- Compact design
- All valve parts made of high-strength steel with hardened and ground components to ensure minimal wear and to extend service life.

SPECIFICATIONS

Operating pressure max.:	420 bar
Nominal flow:	38 l/min
Internal leakage:	0.1 cc/min max. at 420 bar
Standard cracking pressure:	0.35 bar 1.00 bar 2.00 bar 5.00 bar
Media operating temp. range:	- 20 °C to + 120 °C
Fluids:	Mineral-based or synthetics with lubricating properties
Viscosity:	7.4 to 420 cSt
Filtration:	Class 21/19/16 according to ISO 4406 or cleaner
Installation:	No orientation restrictions
Material:	Valve body: carbon steel Ball: carbon steel Seals: NBR (Standard) FKM (Option)
Cavity:	FC08-2
Weight:	60 g

