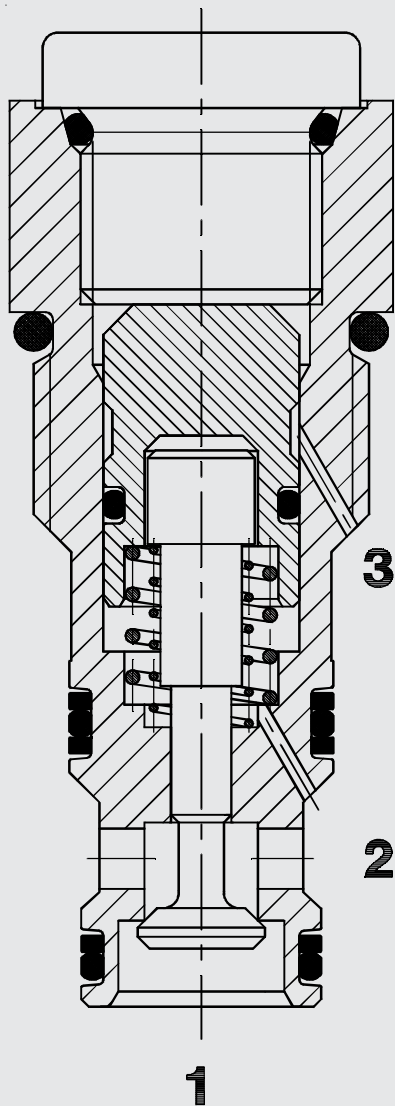


60 l/min  
420 bar

## FUNCTION



The RP10A allows flow from 2 to 1 and blocks flow from 1 to 2 until sufficient pressure is present at 3 to permit flow.

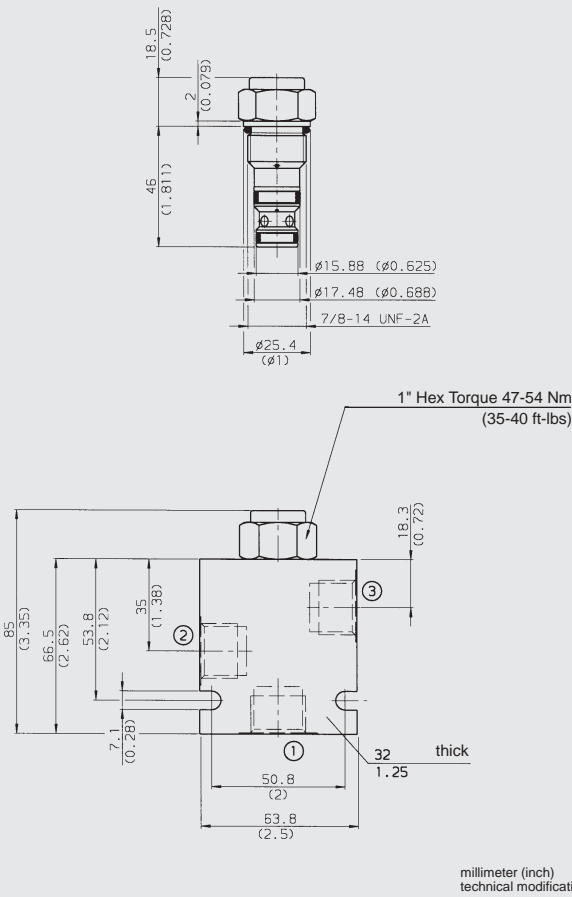
## FEATURES

- All surfaces zinc-plated and corrosion proof
- Spring return at the pilot for safe valve operation
- Optional sealed pilot
- Low leakage design
- Quick response
- Compact design
- All valve parts made of high-strength steel with hardened and ground components to ensure minimal wear and to extend service life

## SPECIFICATIONS

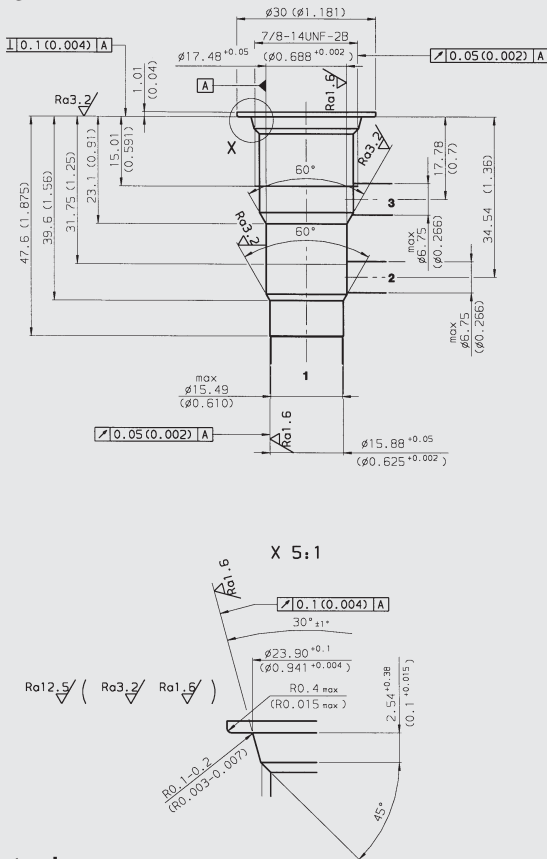
|                              |  |
|------------------------------|--|
| Operating pressure max.:     | 420 bar  |
| Nominal flow:                | 60 l/min   |
| Internal leakage:            | 0.1 cc/min   |
| Standard cracking pressure:  | 1.00 bar   |
| Pilot ratio:                 | 3:1; 4:1   |
| Media operating temp. range: | -20 °C to +120 °C  |
| Fluids:                      | Mineral-based or synthetics with lubricating properties  |
| Viscosity:                   | 7.4 to 420 cSt   |
| Filtration:                  | Class 21/19/16 according to ISO 4406 or cleaner  |
| Material:                    | Valve body: carbon steel<br>Pilot: carbon steel<br>Poppet: carbon steel<br>Seals: NBR (Standard)<br>FKM (Option) |
| Cavity:                      | FC10-3   |
| Weight:                      | 140 g  |

## DIMENSIONS



## CAVITY

FC10-3



### Form tools

| Tool            | Part No        |
|-----------------|----------------|
| Rougher FC10-3  | in preparation |
| Finisher FC10-3 | in preparation |

millimeter (inch)  
technical modifications reserved

## MODEL CODE

RP10A-01 - C - NS - 15-3

Basic Model \_\_\_\_\_

Body and Ports\* \_\_\_\_\_

C = Cartridge only

SB4 = 1/2 BSP ports, steel body

SS8 = SAE-8 ports, steel body

AB4 = 1/2 BSP ports, aluminium body

AS8 = SAE-8 ports, aluminium body

Seals \_\_\_\_\_

N = NBR

NS = NBR with Piston Seal

V = FKM

VS = FKM with Piston Seal

Cracking Pressure \_\_\_\_\_

15 = 1 bar

Pilot Ratio \_\_\_\_\_

3 = 3:1

4 = 4:1

### \*Standard Line Bodies

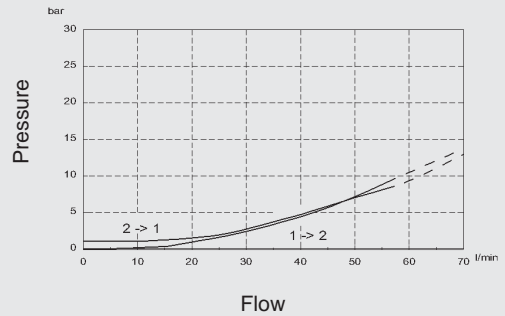
| Code      | Part No | Material                  | Ports   | Pressure |
|-----------|---------|---------------------------|---------|----------|
| FH103-SB4 | 3037697 | Steel, zinc-plated        | 1/2 BSP | 420 bar  |
| FH103-SS8 | 3037704 | Steel, zinc-plated        | SAE-8   | 420 bar  |
| FH103-AB4 | 3038092 | Aluminium, clear anodized | 1/2 BSP | 245 bar  |
| FH103-AS8 | 3038095 | Aluminium, clear anodized | SAE-8   | 245 bar  |

## PERFORMANCE

phi=3:1

Measured at 34 cSt

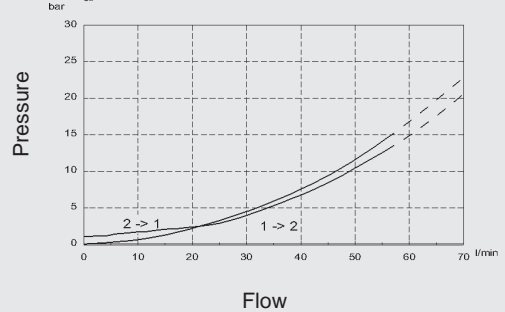
T<sub>oil</sub> = 46 °C



phi=4:1

Measured at 34 cSt

T<sub>oil</sub> = 46 °C



## NOTE

The information in this brochure relates to the operating conditions and applications described. For applications or operating conditions not described, please contact the relevant technical department. Subject to technical modifications.

HYDAC Fluidtechnik GmbH

Justus-von-Liebig-Str.

D-66280 Sulzbach/Saar

Tel: 0 68 97 /509-01

Telefax: 0 68 97 /509-598

E-Mail: flutec@hydac.com