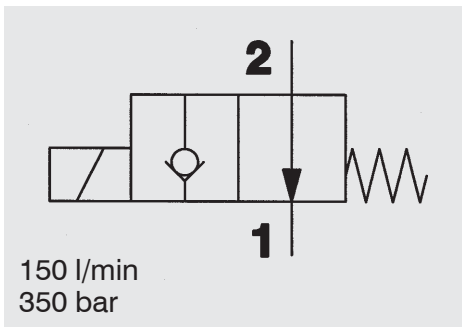
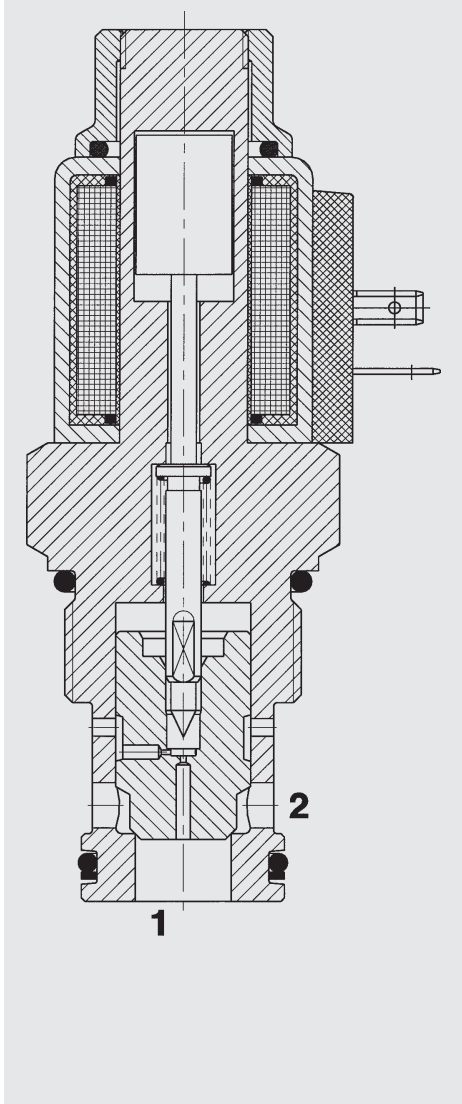


Solenoid Directional Valve SAE 16-Cartridge – 350 bar 2/2 Normally Open

WS16Y-01
Poppet Type - Pilot Operated



FUNCTION



In the de-energized mode, the valve allows flow from 2 to 1. Flow from 1 to 2 is severely restricted in this mode.

When energized, the valve blocks flow from 2 to 1. In this mode the valve will allow flow from 1 to 2 after the hydraulic force overcomes the solenoid force of 1 to 3 bar.

FEATURES

- Wet armature solenoid
- Wide voltage tolerance
- All valve parts made of high-strength steel with hardened and ground components to ensure minimal wear and to extend service life
- All surfaces zinc-plated and corrosion-proof
- Waterproof design standard
- Wide variety of coils and connectors available
- One piece body design

SPECIFICATIONS

Operating pressure:	350 bar
Proof pressure:	520 bar
Flow:	150 l/min up to 280 bar 100 l/min up to 350 bar
Internal leakage:	leakfree (less than 5 drops/min) max. at 350 bar
Media operating temp. range:	-20 °C to +120 °C
Ambient temp. range:	-20 °C to +60 °C
Coil duty rating:	Continuous from 85% to 115% of nominal voltage
Current draw at 20 °C:	1.5 A at 12 V DC 0.8 A at 24 V DC
Minimum pull-in voltage:	85 % of nominal
Response time:	Energized: 150 ms De-energized: 35 ms typical 24 V DC-coil
Fluids:	Mineral-based or synthetics with lubricating properties
Viscosity:	7.4 to 420 cSt
Filtration:	Class 21/19/16 according to ISO 4406 or cleaner
Installation:	No orientation restrictions
Material:	Valve body: carbon steel Piston: carbon steel Seals: NBR (standard) FKM (optional) Steel/Polyamide
Cavity:	FC16-2
Weights:	Valve complete: 645 g Coil only: 190 g

