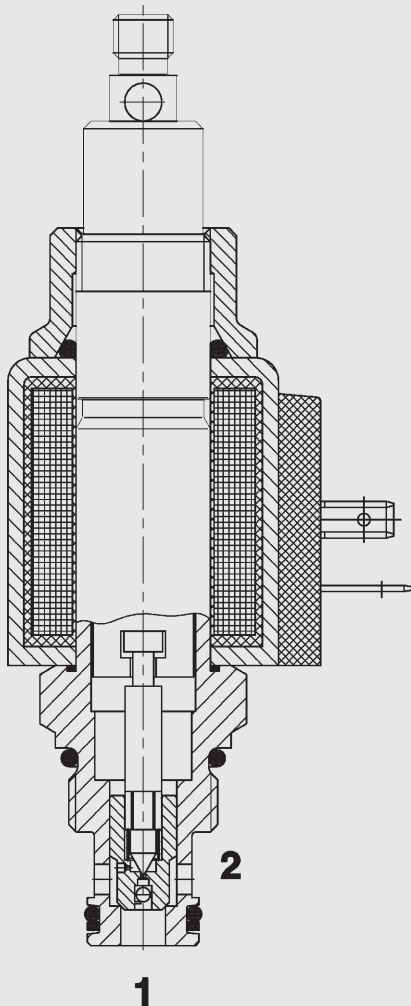


up to 40 l/min
up to 350 bar

FUNCTION



In the de-energized mode, the valve blocks flow from 2 to 1 and acts as a check allowing flow from 1 to 2.

When energized, the valve allows flow in both directions.

2/2 Solenoid Directional Valve Poppet Type - Pilot Operated Spring-Return Manual Override Normally Closed (Reverse Flow) Cartridge Valve - 350 bar

WSM06020ZR-01J

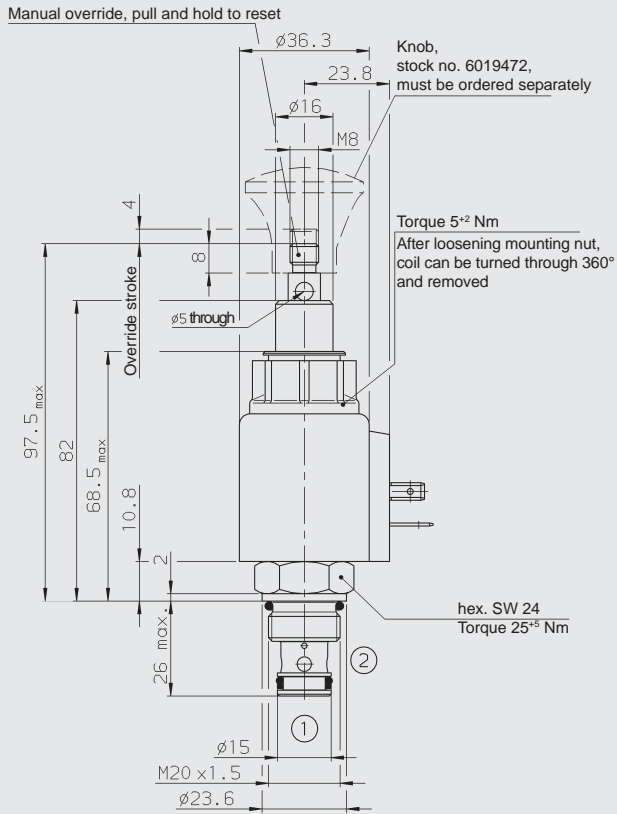
FEATURES

- All surfaces zinc-plated and corrosion-proof.
- Minimal wear and extended service life due to hardened and ground valve components.
- Waterproof design as standard.
- Wide variety of connectors available.
- Rigid design using one-piece body minimises the effect of eccentricity and maximises reliability.
- Excellent switching performance by high power HYDAC solenoid.
- Low pressure drop due to CFD optimised flow-path.

SPECIFICATIONS

Operating pressure:	Max. 350 bar	
Nominal flow:	Max. 40 l/min	
Internal leakage:	Leakage-free	
Media operating temp. range:	-20 °C to +120 °C	
Ambient temperature range:	-20 °C to +60 °C	
Type of voltage:	DC solenoid, AC voltage is rectified using a bridge rectifier built into the coil	
Current draw at 20 °C:	1.5 A at 12 V DC 0.8 A at 24 V DC	
Voltage tolerance:	+/-15% of the nominal voltage	
Coil duty rating:	Continuous up to 115% nominal voltage at 60 °C ambient temperature	
Manual override:	The pull-force required is dependent on the operating pressure max. approx. 150 N The max. permissible pull force is 180 N	
Response time:	Energized: approx. 35 ms De-energized: approx. 50 ms (typical 24 V CD-coil)	
Fluids:	Hydraulic oil to DIN 51524 Part 1 and 2	
Viscosity:	10 mm ² /s to 420 mm ² /s is recommended	
Filtration:	Permissible contamination level of the operating fluid to ISO 4406 Class 21/19/16 or cleaner	
Installation:	Optional	
Materials:	Valve body:	high tensile steel
	Closing elements:	hardened and ground steel
	Seals:	NBR (standard) FKM (optional) back-up rings in PTFE
	Coil:	Steel/Polyamide
Cavity:	06020	
Weights:	Valve complete:	0.36 kg
	Coil only:	0.19 kg

DIMENSIONS



millimeter
subject to technical modifications

MODEL CODE

WSM 06020 ZR-01 J-C-N-24 DG

Designation _____
(Directional poppet valve, metric)

Cavity _____
06020 = 2-way cavity

Function code _____

Type _____
01 = standard model

Manual override _____
J = pull-type, spring-return manual override

Body and ports _____
C = cartridge only

Seals _____
N = NBR
V = FKM

Coil voltage _____

DC voltages
12 = 12 V DC
24 = 24 V DC

AC voltages (internally full wave rectified)
24 = 24 V AC
115 = 115 V AC
230 = 230 V AC
other voltages on request

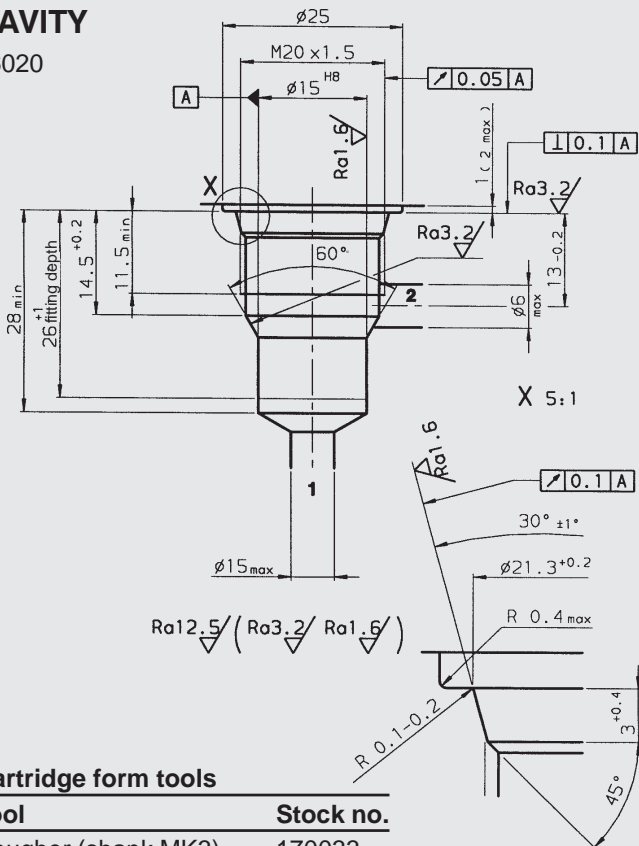
Coil connector _____

DC: DG = DIN connector to EN 175301-803
DL = Leadwires (2) - 457 mm, 18" long
DW = Weather Pack connector on leadwires - 241mm (9.5") long
DT = AMP Junior Timer, 2-pole, radial
DK = KOSTAL threaded connection M27x1

AC: AG = DIN connector to EN 175301-803
other connection types on request

CAVITY

06020



millimeter
subject to technical modifications

Cartridge form tools

Tool	Stock no.
Rougher (shank MK3)	170033
Finisher (shank MK2)	1000768

Standard models

Model code	Stock no.
WSM06020ZR-01J-C-N-24DG	3123457
WSM06020ZR-01J-C-N-230AG	3123561

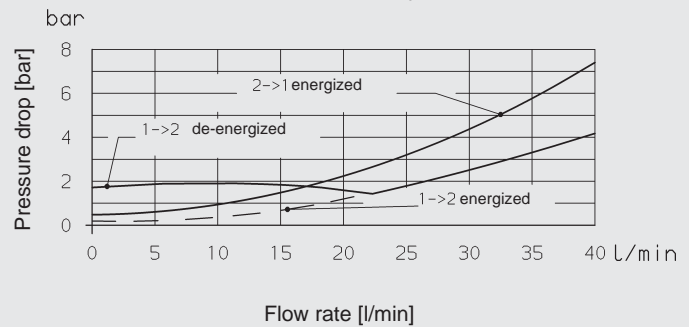
Inline connection housings

Code	Stock no.	Material	Ports
R06020-01X-01	275266	Steel, zinc-plated	G 3/8

For other connection housings, see brochure no. E 5.252. "Connection Housings for Cartridge Valves".

PERFORMANCE

measured at 34 mm²/s ; T_{oil} = 46 °C



NOTE

The information in this brochure relates to the operating conditions and applications described.
For applications or operating conditions not described, please contact the relevant technical department.
Subject to technical modifications.

HYDAC Fluidtechnik GmbH
Justus-von-Liebig-Str.
D-66280 Sulzbach/Saar
Tel: 0 68 97 /509-01
Telefax: 0 68 97 /509-598
E-Mail: flutec@hydac.com