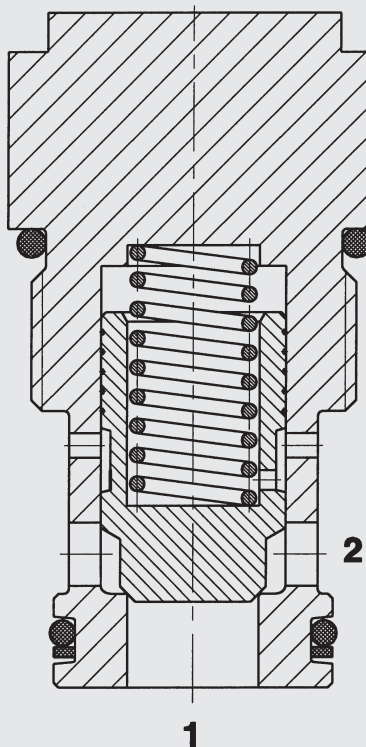




165 l/min
420 bar

FUNCTION



The RV16A allows flow from 1 to 2, while normally blocking flow in the opposite direction. The guided check is spring-biased closed until sufficient pressure is applied at 1 to open to 2.

Check Valve SAE 16-Cartridge - 420 bar RV16A-01 Poppet Type

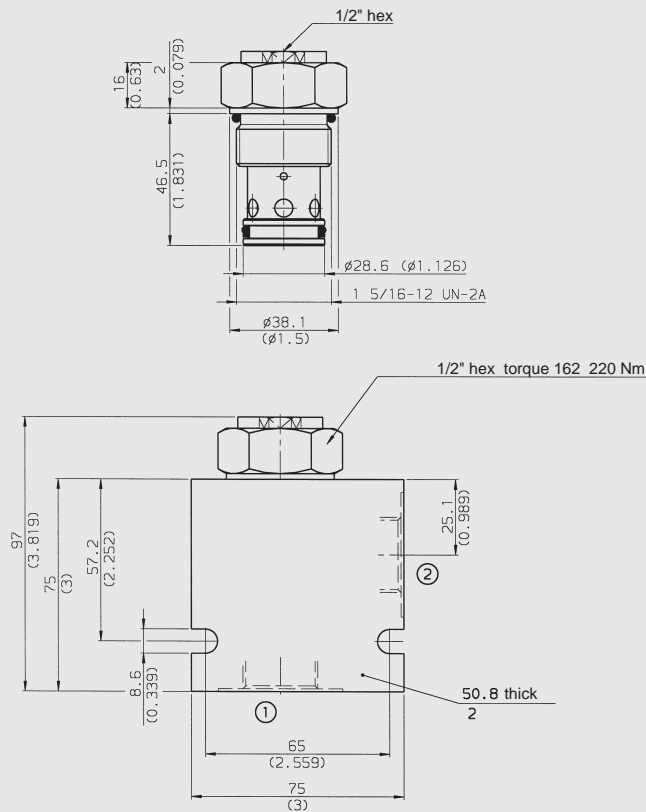
FEATURES

- All surfaces zinc-plated and corrosion proof
- Hardened closing element
- Low leakage design
- Compact design
- All valve parts made of high-strength steel with hardened and ground components to ensure minimal wear and to extend service life.

SPECIFICATIONS

Operating pressure:	420 bar
Nominal flow:	165 l/min
Internal leakage:	0.1 cc/min max. at 420 bar
Standard cracking pressure:	0.35 bar 1.00 bar 2.00 bar 5.00 bar
Media operating temp. range:	- 20 °C to + 120 °C
Fluids:	Mineral-based or synthetics with lubricating properties
Viscosity:	7.4 to 420 cSt
Filtration:	Class 21/19/16 according to ISO 4406 or cleaner
Material:	Valve body: carbon steel Ball: carbon steel Seals: NBR (standard) FKM (optional)
Cavity:	FC16-2
Weights:	345 g

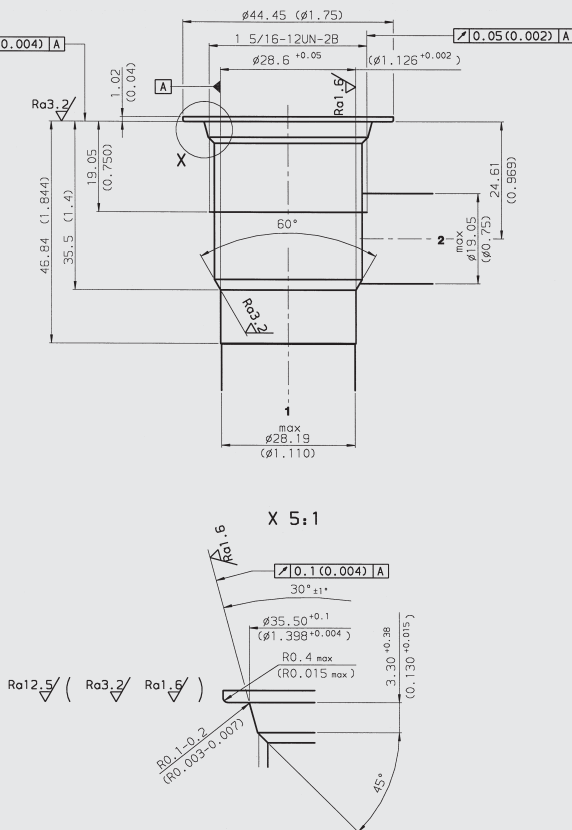
DIMENSIONS



millimeter (inch)
Subject to technical modifications.

CAVITY

FC16-2



millimeter (inch)
Subject to technical modifications.

Form tools

Tool	Part. No.
Rougher FC16-2	in preparation
Finisher FC16-2	in preparation

MODEL CODE

RV16A-01 - C - N - 05

Basic Model

Body and ports*

C = Cartridge only

SB8 = 1 BSP ports, steel body

SS16 = SAE-16 ports, steel body

AB8 = 1 BSP ports, aluminium body

AS16 = SAE-16 ports, aluminium body

Seals

N = NBR

V = FKM

Bias spring

05 = 0.35 bar

15 = 1.00 bar

30 = 2.00 bar

70 = 5.00 bar

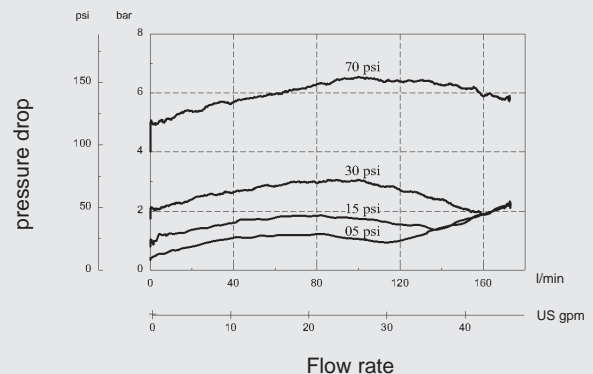
* Standard Line Bodies

Code	Part. No.	Material	Ports	Pressure
FH162-SB8	3032496	Steel, zinc-plated	1 BSP	420 bar
FH162-SS16	3032655	Steel, zinc-plated	SAE-16	420 bar
FH162-AB8	3037193	Aluminium, clear anodized	1 BSP	245 bar
FH162-AS16	3037195	Aluminium, clear anodized	SAE-16	245 bar

PERFORMANCE

Measured at 34 cSt

T_{oil} = 46 °C



NOTE

The information in this brochure relates to the operating conditions and applications described. For applications or operating conditions not described, please contact the relevant technical department. Subject to technical modifications.

HYDAC Fluidtechnik GmbH
Justus-von-Liebig-Str.
D-66280 Sulzbach/Saar
Tel: 0 68 97 /509-01
Telefax: 0 68 97 /509-598
E-Mail: flutec@hydac.com