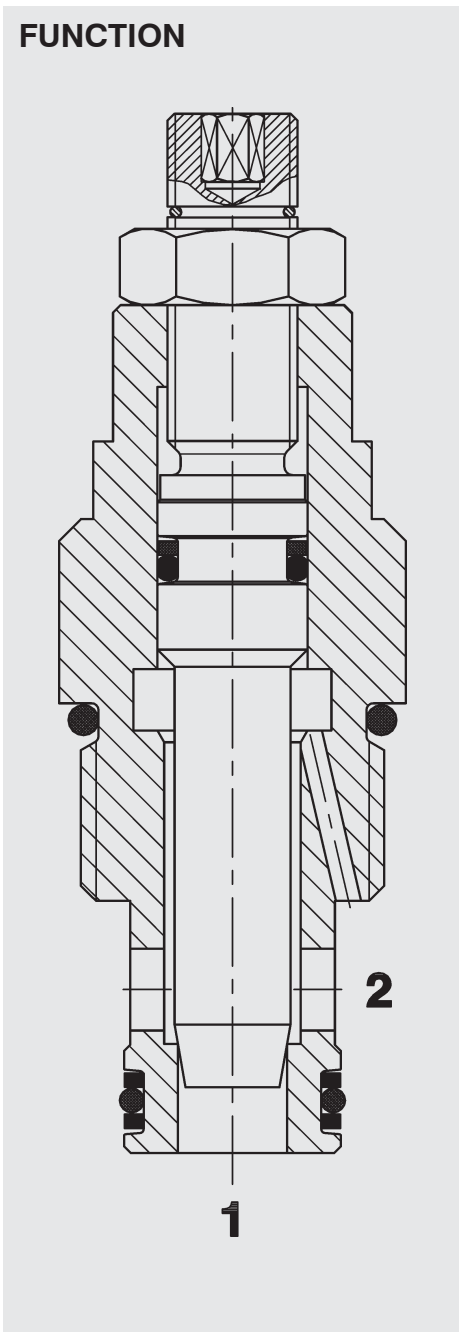


FUNCTION



The SD10 controls flow in either direction from full flow up to complete shut-off and is non pressure compensated. It means the flow rate dependent on the pressure differential and viscosity.

Needle Valve SAE 10-Cartridge – 420 bar SD10-01

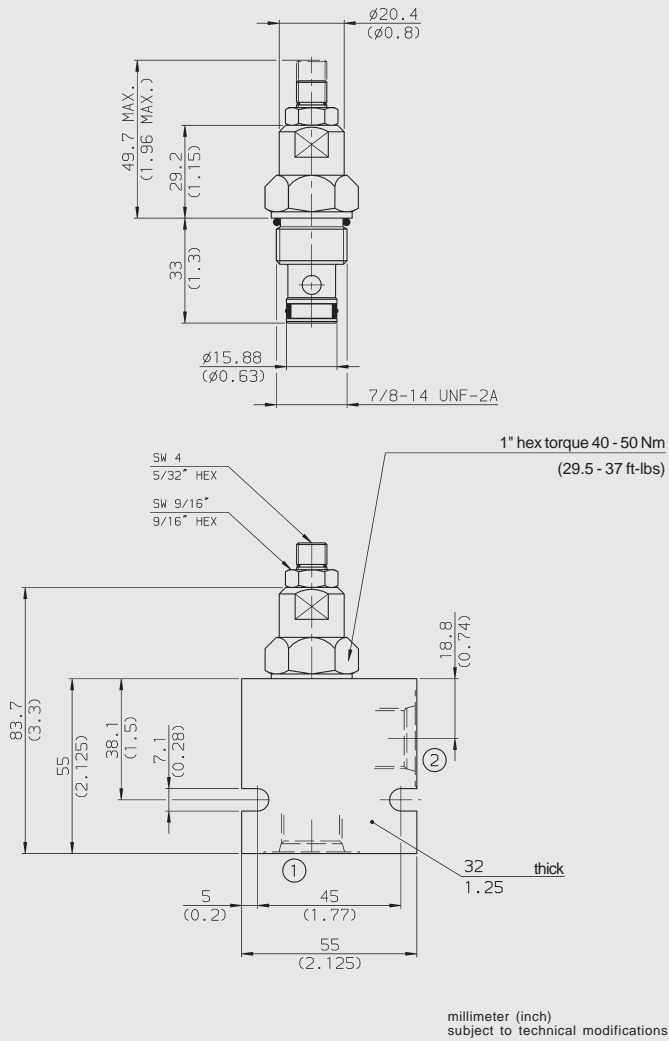
FEATURES

- All surfaces zinc-plated and corrosion proof
- Complete shut-off function
- Compact design

SPECIFICATIONS

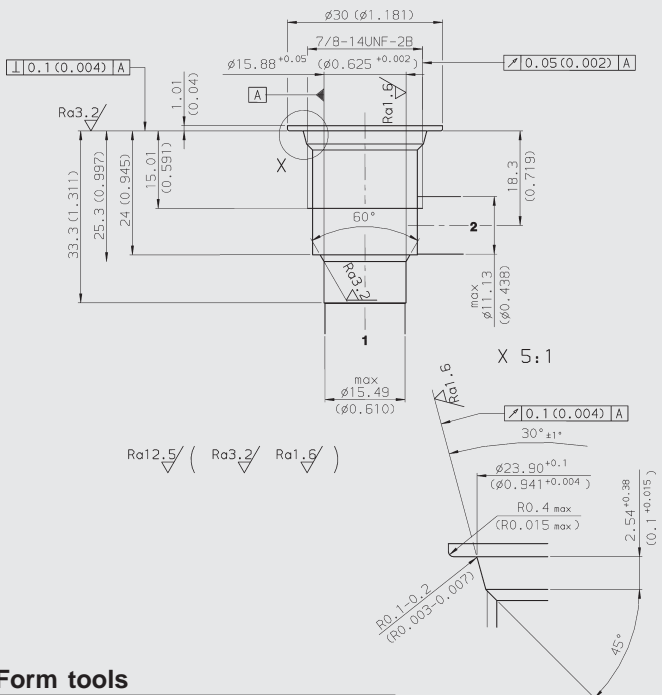
Operating pressure:	420 bar
Nominal flow:	160 l/min
Media operating temp. range:	-20 °C to +120 °C
Fluids:	Mineral-based or synthetics with lubricating properties
Viscosity:	7.4 to 420 cSt
Filtration:	Class 21/19/16 according to ISO 4406 or cleaner
Material:	Valve body: carbon steel Spool: carbon steel Seals: NBR (standard) FKM (optional)
Cavity:	FC10-2
Weight:	154 g

DIMENSIONS



CAVITY

FC10-2



Form tools

Tool	Part No
Rougher FC10-2	in preparation
Finisher FC10-2	in preparation

MODEL CODE

SD10-01 - C - N - V

Basic Model

Body and Ports*

C = Cartridge only

SB4 = 1/2 BSP ports, steel body

SS8 = SAE-8 ports, steel body

AB4 = 1/2 BSP ports, aluminium body

AS8 = SAE-8 ports, aluminium body

Seals

N = NBR

V = FKM

Adjustment Option

V = Allen head (HEX 5/32")

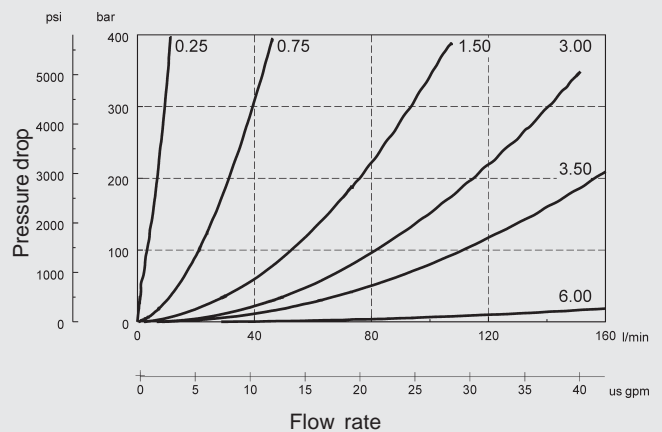
H = Knob adjustment

*Standard Line Bodies

Code	Part No	Material	Ports	Pressure
FH102-SB4	3037594	Steel, zinc-plated	1/2 BSP	420 bar
FH102-SS8	3037612	Steel, zinc-plated	SAE-8	420 bar
FH102-AB4	3037777	Aluminium, clear anodized	1/2 BSP	245 bar
FH102-AS8	3037778	Aluminium, clear anodized	SAE-8	245 bar

PERFORMANCE

Measured at 34 cSt, $T_{oil} = 46^\circ C$



NOTE

The information in this brochure relates to the operating conditions and applications described. For applications or operating conditions not described, please contact the relevant technical department. Subject to technical modifications.

HYDAC Fluidtechnik GmbH
Justus-von-Liebig-Str.
D-66280 Sulzbach/Saar
Tel: 0 68 97 /509-01
Telefax: 0 68 97 /509-598
E-Mail: flutec@hydac.com