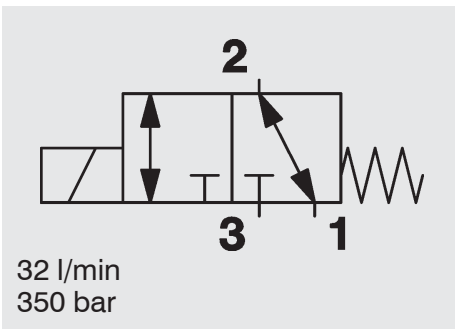


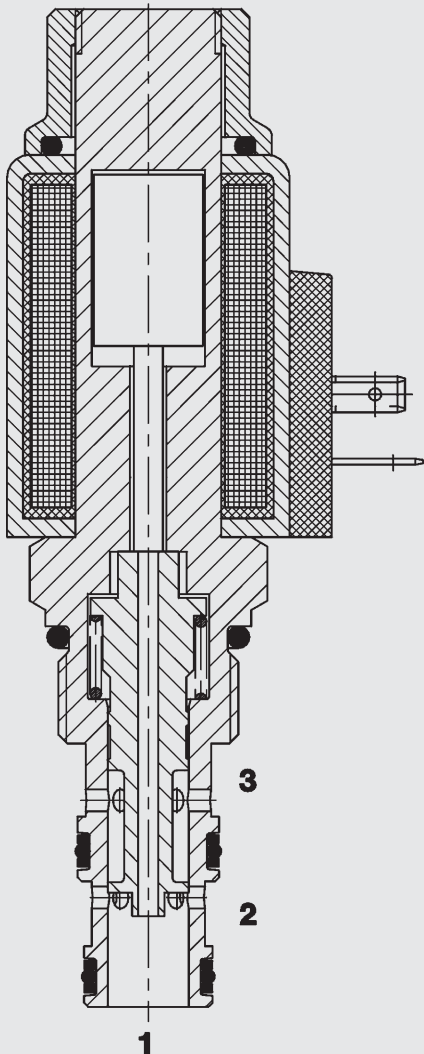
3/2-Solenoid Directional Valve SAE 10-Cartridge - 350 bar Special low pressure drop design

WK10C-40

SPOOL Type - Direct Operated



FUNCTION



In the de-energized mode, the valve allows flow from 2 to 1 or from 1 to 2, while blocking flow at 3.

When energized, the valve allows flow from 3 to 2 or from 2 to 3, while blocking flow at 1.

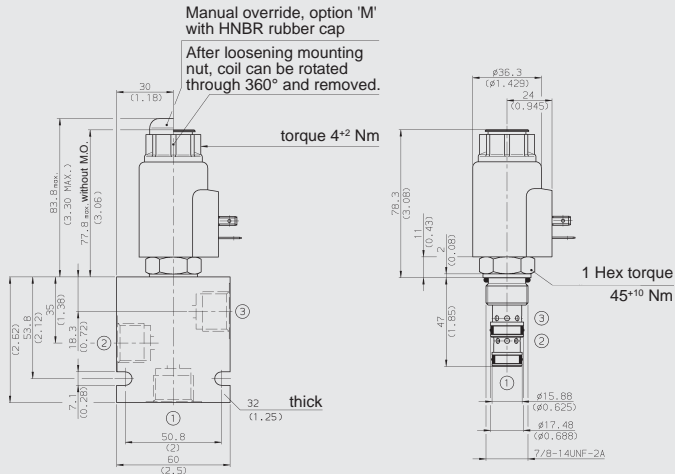
FEATURES

- Excellent switching performance by high power HYDAC solenoid
- All valve parts made of high-strength steel with hardened and ground components to ensure minimal wear and to extend service life
- Rigid design using one-piece body minimizes the effect of eccentricity and maximizes reliability
- All surfaces zinc-plated and corrosion-proof
- Waterproof design standard
- Wide variety of connectors available
- Low pressure drop by CFD optimized flow-path

SPECIFICATIONS

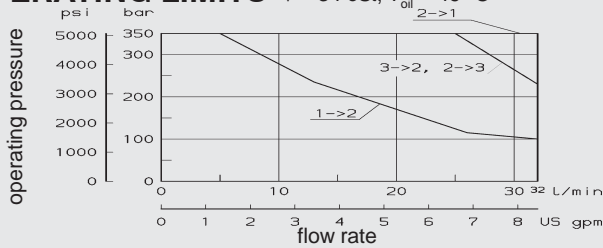
Operating pressure:	350 bar
Nominal flow:	32 l/min
Internal leakage:	250 cm ³ /min max at 250 bar and 34 cSt
Media operating temp. range:	-20 °C to +120 °C
Ambient temp. range:	-20 °C to +60 °C
Coil duty rating:	Continuous from 85% to 115% of nominal voltage
Current draw at 20 °C:	2.22 amps at 12 V DC 1.13 amps at 24 V DC
Minimum pull-in voltage:	85 % of nominal
Fluids:	Mineral-based or synthetics with lubricating properties
Viscosity:	7.4 to 420 cSt
Filtration:	Class 21/19/16 according to ISO 4406 or cleaner
Material:	Valve body: carbon steel Spool: carbon steel Seals: NBR (standard) FKM (optional) Coil: Steel/Polyamide
Cavity:	FC10-3
Weights:	Valve complete: 470 g Coil only: 230 g

DIMENSIONS



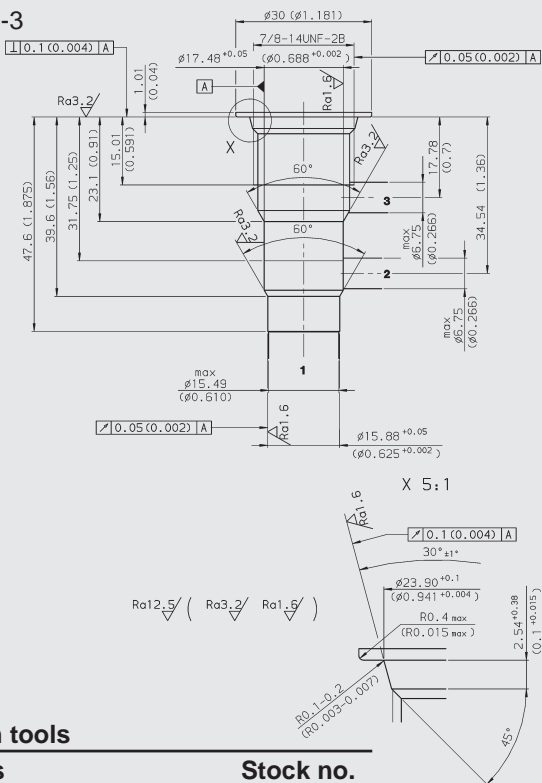
OPERATING LIMITS

$v = 34 \text{ cSt}$, $T_{oil} = 46 \text{ °C}$



CAVITY

FC10-3



MODEL CODE

WK10C-40 M - C - N - 24 DG

Basic Model

Option

Omission = No Option

M = Manual Override

Body & Ports*

C = Cartridge only

SB4 = 1/2 BSP ports, steel body

SS8 = SAE-8 ports, steel body

AB4 = 1/2 BSP ports, aluminium body

AS8 = SAE-8 ports, aluminium body

Seals

N = NBR

V = FKM

Coil Voltage

DC

10 = 10 V DC

12 = 12 V DC

24 = 24 V DC

36 = 36 V DC

48 = 48 V DC

110 = 110 V DC available with DG termination only

AC (internally full wave rectified)

24 = 24 V AC

115 = 115 V AC

230 = 230 V AC

Coil Connector

DC: DG = DIN Connector (DIN 43650)

DS = Dual Spade SAEJ858a

DL = Leadwires (2) - 457 mm (18") long

DW = Weather Pack Connector on leadwires - 241 mm (9.5") long

DK = Kostal connector

DT = 2-pole AMP Junior Timer plug

AC: AG = DIN Connector (DIN 43650)

*Standard Line Bodies:

Code	Stock no.	Material	Ports
FH103-SB4	3037697	Steel, zinc-plated	1/2 BSP 420 bar
FH103-SS8	3037704	Steel, zinc-plated	SAE-8 420 bar
FH103-AB4	3038092	Aluminium, clear anodized	1/2 BSP 245 bar
FH103-AS8	3038095	Aluminium, clear anodized	SAE-8 245 bar

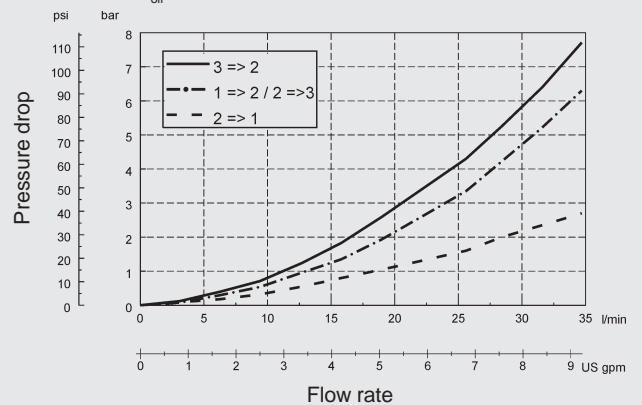
Standard models

Model code	Stock no.
WK10C-40-C-N-24DG	3129698
WK10C-40-C-N-230AG	3129699

PERFORMANCE

measured at 33 cSt

$T_{oil} = 46 \text{ °C}$



NOTE

The information in this brochure relates to the operating conditions and applications described. For applications or operating conditions not described, please contact the relevant technical department.

Subject to technical modifications.

HYDAC Fluidtechnik GmbH

Justus-von-Liebig-Str.

D-66280 Sulzbach/Saar

Tel: 0 68 97 /509-01

Telefax: 0 68 97 /509-598

E-Mail: flutec@hydac.com